



Geospatial Data Sharing

Resolving the Policy Issues

Joint Legislative Committee on Information
Management and Technology

February 26, 2016

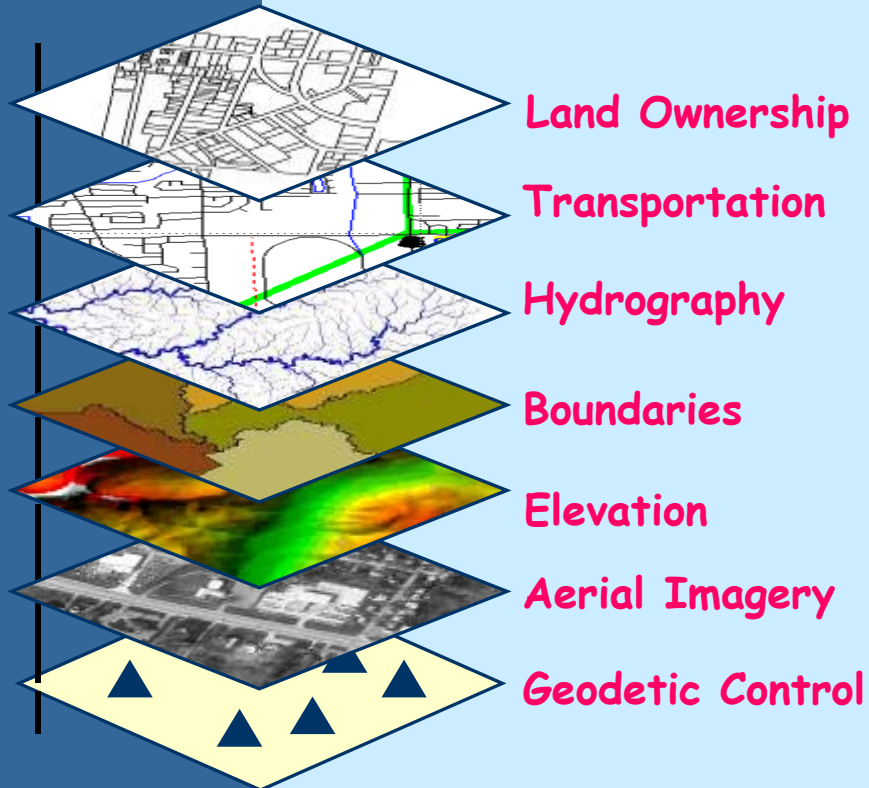


Why Geospatial Data Sharing Is Important

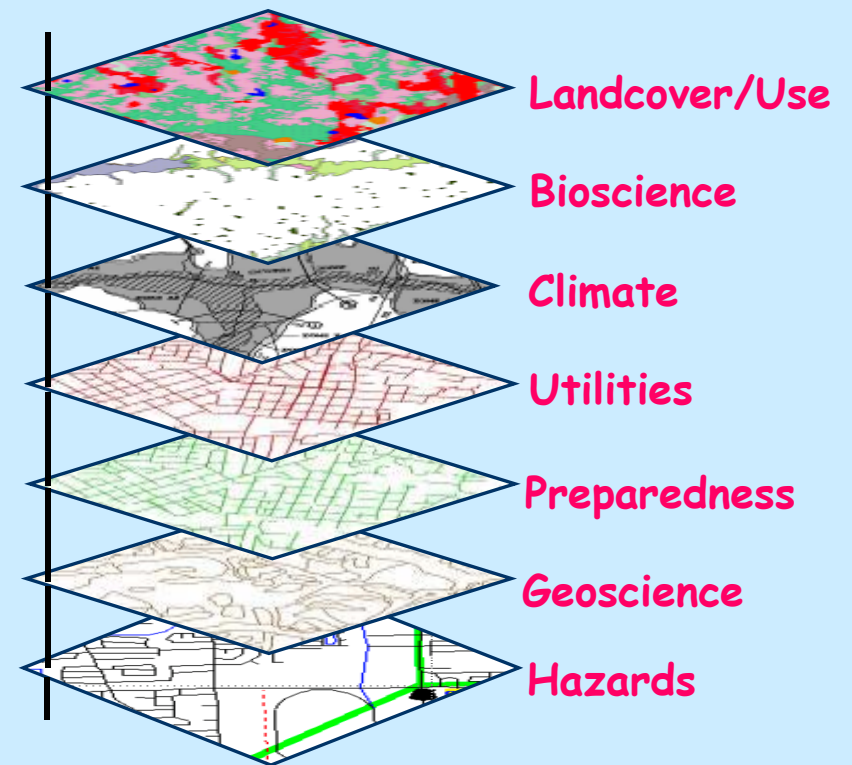
- Government organizations in Oregon spend large sums to collect, manage, maintain & use geospatial data
- Sizable and costly portion of needed data is common to nearly all programs – duplication of effort wastes time, money, and inhibits effective service delivery
- Most government activities are completed with multi-agency and multi-jurisdictional collaboration
- Using a shared set of Framework data would eliminate the need for most duplication of effort and improve decision making via the use of common information

Framework Data

Nationally Recognized



Oregon Specific



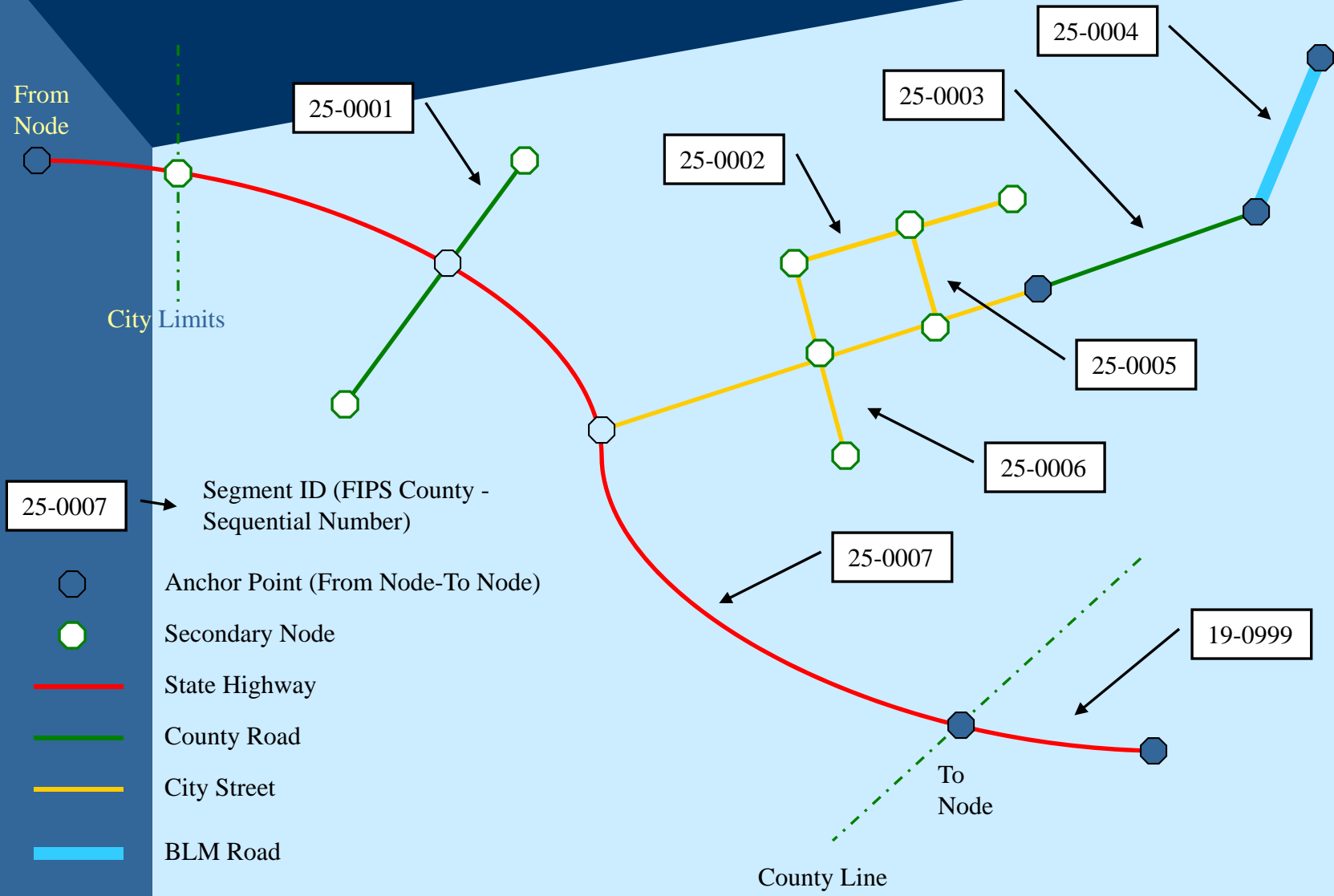
Framework Data Initiative

- Fifteen Working Committees – 450+ people
- Operates Under Auspices of Governor's Geographic Information Council
- Tasked with Implementation Plan and Standard for each data theme
- Data Standards Development & Adoption Process
- Biggest Challenges: Funding; Communication; Constraints placed on data sharing

Transportation Framework

- Statewide street centerline file
- Updated locally; State Department of Transportation is data steward
- Integrated with state highways and federal resource roads
- E-911 funding mechanism and federal gas tax for development and maintenance
- Coordinated with regional & national models

Oregon's Transportation Framework



Managing a Shared Resource

- How will consistent communications happen?
- How will policies, standards, and procedures be established?
- How will the distributed data for all the shared themes be updated consistently to ensure that relied-upon capabilities are always available?
- A shared governance structure with equal representation from all sectors is essential.
- Stakeholders grant that structure its authority.



Sheldon Ridge Fire 2002

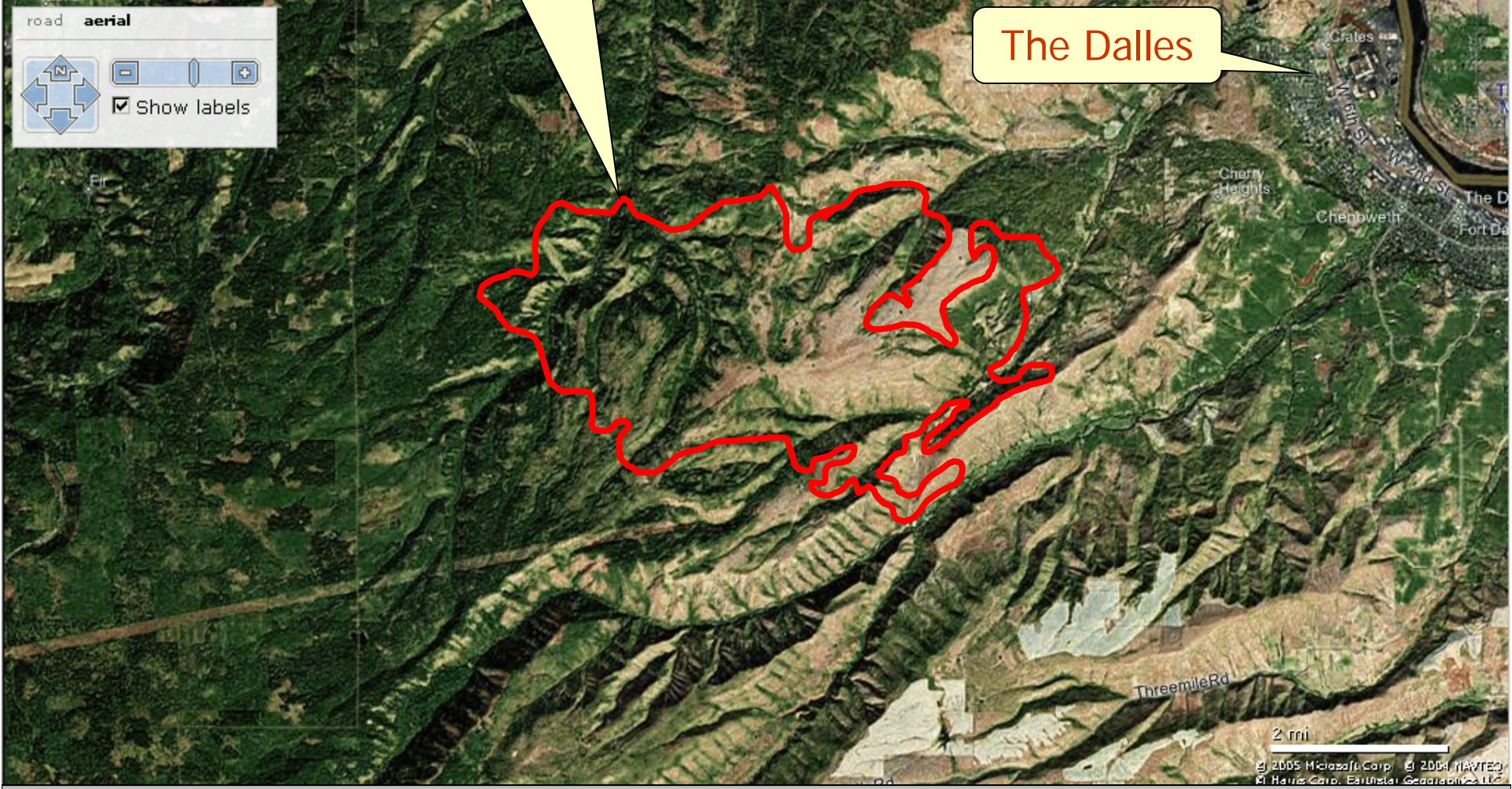


Fire Perimeter
July 26, 2002

road aerial

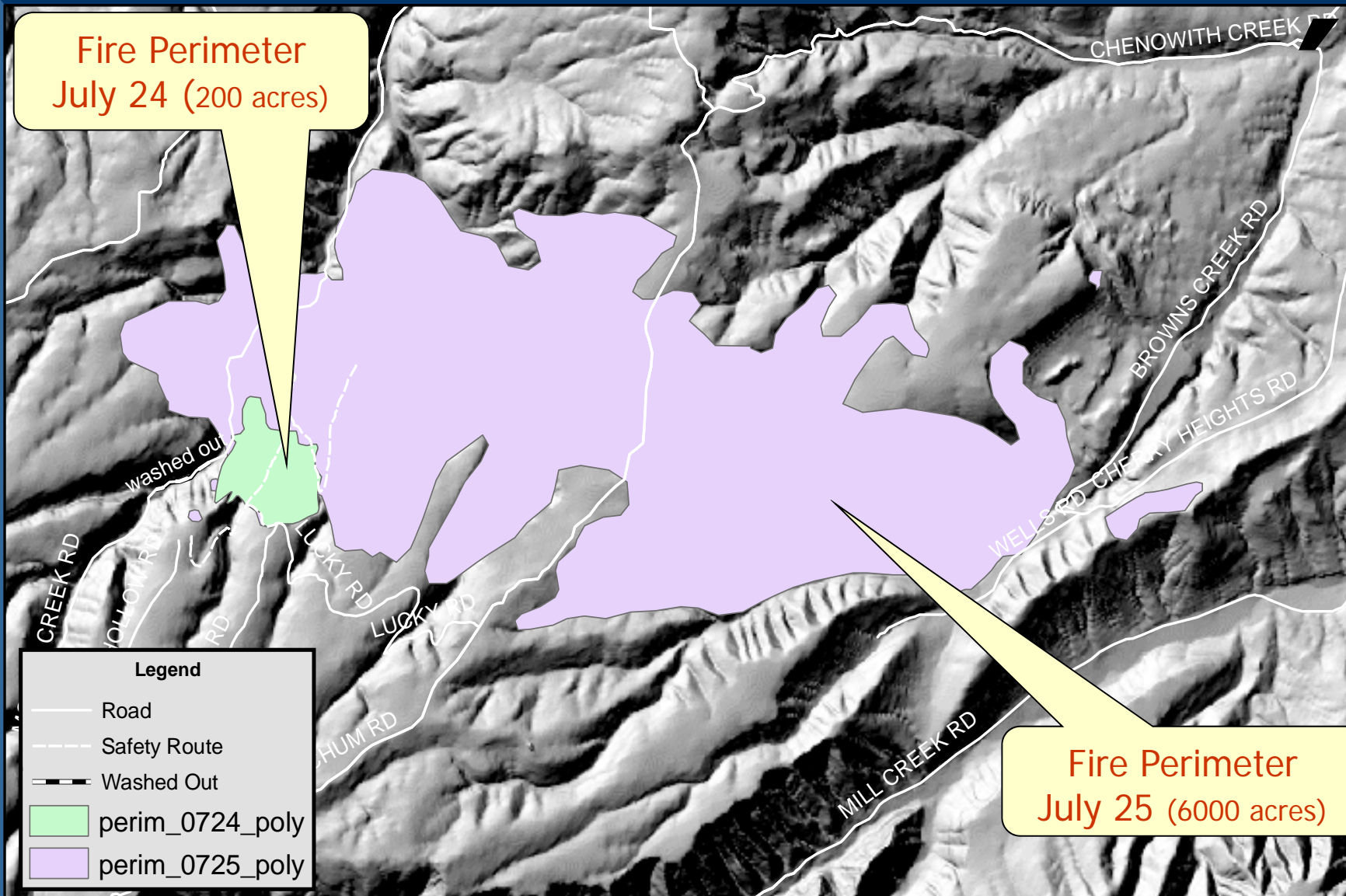
Show labels

The Dalles



Sheldon Fire

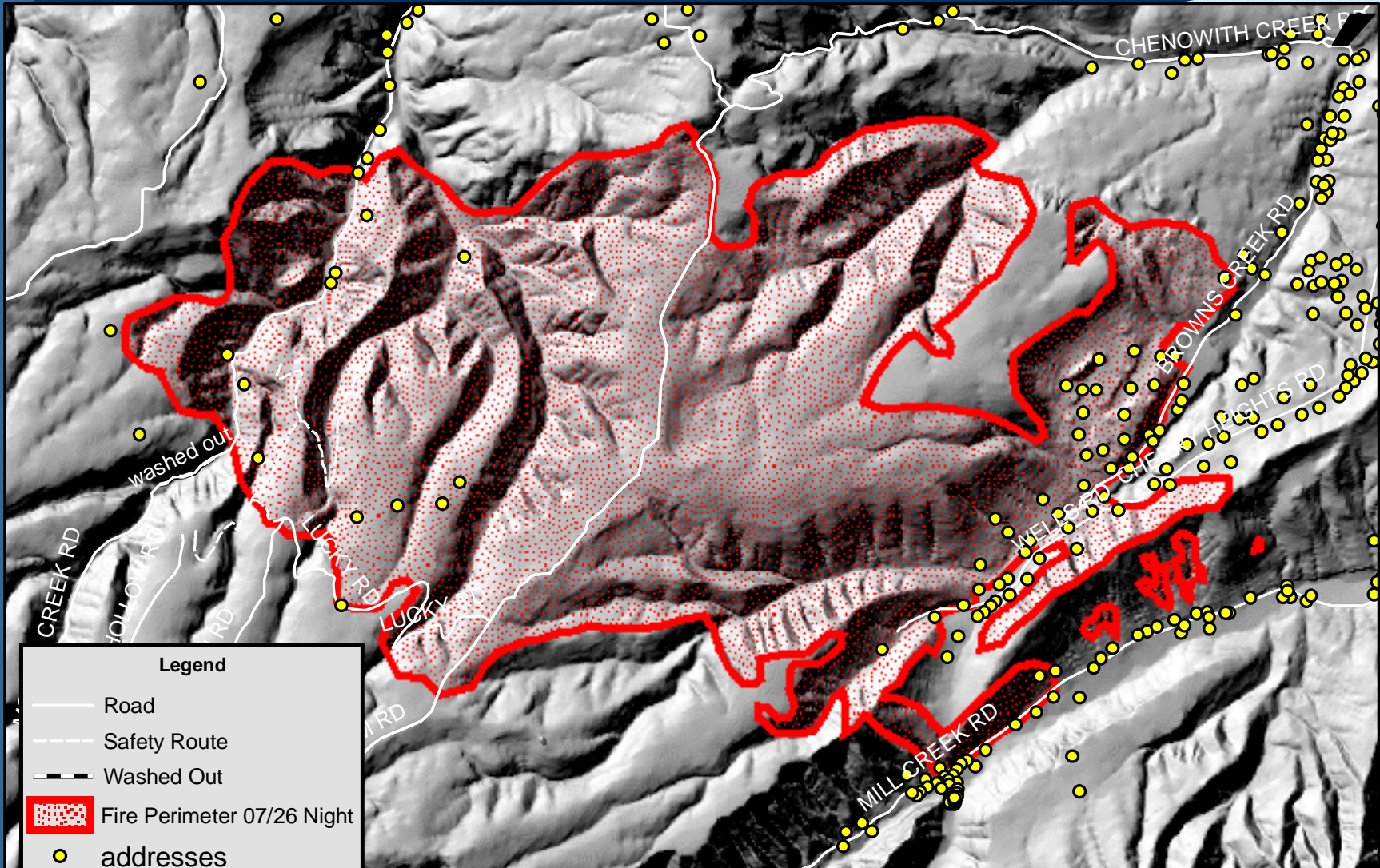
Wasco County/ODF GIS
July 27, 2002 1500hrs



Sheldon Ridge Fire 2002

Sheldon Fire July 27, 2002 Night Shift

Wasco County/ODF GIS
July 27, 2002 1500hrs

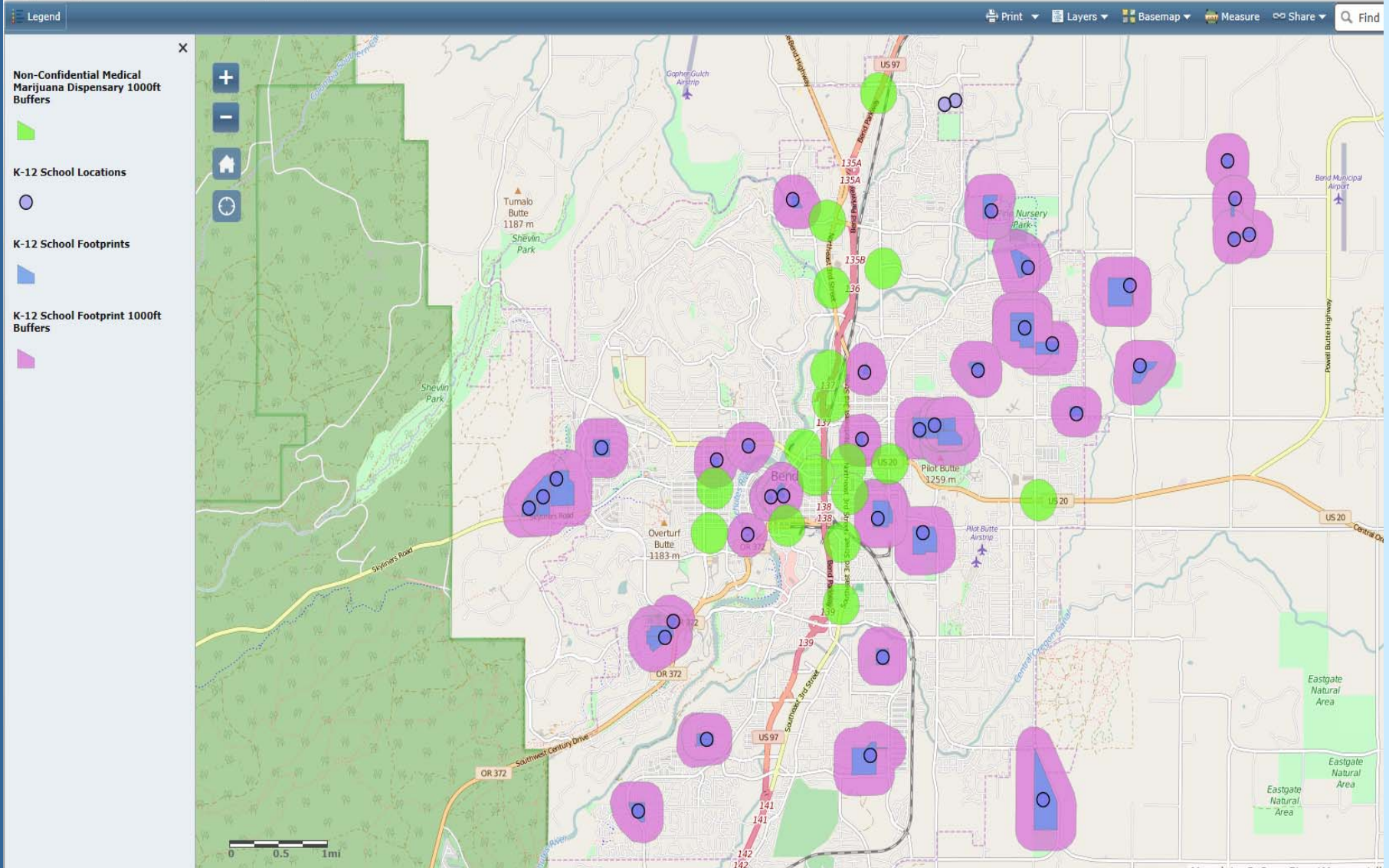


Sheldon Ridge Fire 2002

Schools & Marijuana Dispensaries

School Footprint Buffer Areas (1000 Feet)

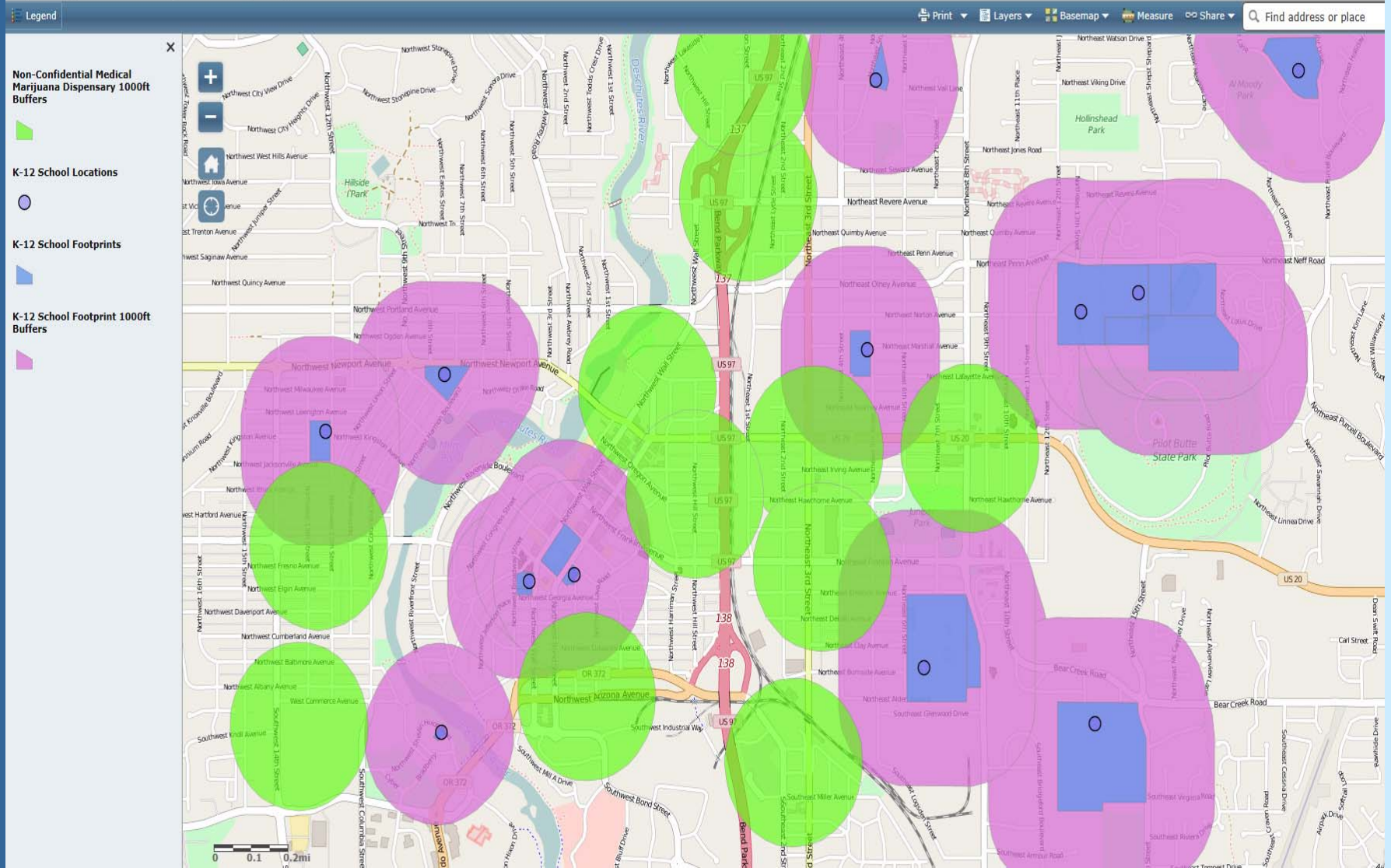
This is a tool provided for use to help locate schools and dispensaries. There may be schools that are not shown on this map, and only the dispensaries that agreed to allow the Oregon Health Authority to publish their locations are listed. An applicant rely on the information provided in this tool as proof that a proposed location is not within 1,000 feet of a school or another dispensary. After you have submitted an application you will be notified by the Oregon Health Authority whether the proposed criteria for registration. If your location is within 1,000 feet of a school or another dispensary, the Oregon Health Authority will issue you a denial notice that explains your appeal rights. Even if you are issued a registration, if it is determined that a school is within 1,000 feet, the Oregon Health Authority must revoke your registration.



Schools & Marijuana Dispensaries

School Footprint Buffer Areas (1000 Feet)

This is a tool provided for use to help locate schools and dispensaries. There may be schools that are not shown on this map, and only the dispensaries that agreed to allow the Oregon Health Authority to publish their locations are listed. An applicant **cannot and should not** rely on the information provided in this tool as proof that a proposed location is not within 1,000 feet of a school or another dispensary. After you have submitted an application you will be notified by the Oregon Health Authority whether the proposed dispensary meets the criteria for registration. If your location is within 1,000 feet of a school or another dispensary, the Oregon Health Authority will issue you a denial notice that explains your appeal rights. Even if you are issued a registration, if it is determined that a school is located within 1,000 feet, the Oregon Health Authority must revoke your registration.



Data Access Issues

- Liability
- Cost
- Confidentiality
- Privacy
- Security
- Standards
- Public Access Laws
- Copyright
- Quality Assurance
- Maintenance
- Documentation
- Accessibility

Solution Attempts

- Model policies
 - Generic
 - Over-riding principles
 - Conforming to public records law
- Intergovernmental Agreements
 - List of all data to be shared
 - Multiple options for sharing (web only; state agencies only; public)
- Intergovernmental Agreements
 - Individual data sets
 - Multiple options for sharing (web only; state agencies only; public)

Key Issues to Resolve

- Privacy, confidentiality, security
 - All public bodies subject to statutes
- Liability
 - Need to strengthen liability protections
- Cost
 - There are significant costs to develop & maintain consistent data sets to support all government business processes
 - Those costs are slight compared to the benefits