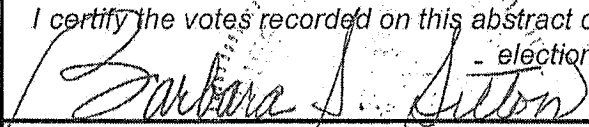



WHEELER COUNTY 2016 GENERAL ELECTION					
DATE: 11/8/2016					
		FOSSIL #1	MITCHELL #3	SPRAY #4	TOTALS
<u>President/Vice President</u>					
Donald J Trump / Mike Pence		251	153	187	591
Hillary Clinton / Tim Kaine		85	42	28	155
Jill Stein / Ajamu Baraka		5	1	4	10
Gary Johnson / Bill Weld		28	9	9	46
Write-Ins		13	1	2	16
Overvotes		3	0	1	4
Undervotes		11	2	5	18
<u>US Senator</u>					
Steven C Reynolds		22	5	9	36
Ron Wyden		201	81	73	355
Mark Callahan		138	114	132	384
Eric Navickas		4	0	1	5
Jim Lindsay		1	1	2	4
Shanti S Lewallen		12	2	5	19
Write-Ins		0	0	0	0
Overvotes		1	0	1	2
Undervotes		17	5	13	35
<u>Representative in Congress - 2nd District</u>					
Greg Walden		314	179	191	684
James (Jim) Cray		62	24	25	111
Write Ins		3	0	2	5
Overvotes		0	0	0	0
Undervotes		17	5	18	40
<u>Governor</u>					
James Foster		5	5	7	17
Kate Brown		112	45	37	194
Cliff Thomason		15	0	7	22
Aaron Donald Auer		6	1	5	12
Bud Pierce		249	153	173	575
Write Ins		0	0	0	0
Overvotes		1	0	0	1
Undervotes		8	4	7	19
<p>I certify the votes recorded on this abstract correctly summarize the tally of votes cast at the - election indicated.</p> <div style="display: flex; justify-content: space-between;"> <div>  Signature of County Clerk </div> <div> 11/23/16 Date </div> </div>					

WHEELER COUNTY 2016 GENERAL ELECTION					
DATE: 11/08/2016					
		FOSSIL #1	MITCHELL #3	SPRAY #4	TOTALS
Secretary of State					
Sharon L Durbin		3	6	3	12
Dennis Richardson		263	155	168	586
Paul Damian Wells		18	2	5	25
Brad Avakian		77	33	38	148
Alan Zundel		6	0	3	9
Michael Marsh		1	1	5	7
Write-Ins		0	0	0	0
Overvotes		0	0	0	0
Undervotes		28	11	14	53
State Treasurer					
Chris Henry		13	3	12	28
Tobias Read		87	35	33	155
Jeff Gudman		217	136	140	493
Chris Telfer		40	18	29	87
Write-Ins		0	1	0	1
Overvotes		1	0	0	1
Undervotes		38	15	22	75
Attorney General					
Lars D H Hedbor		12	12	7	31
Ellen Rosenblum		112	52	49	213
Daniel Zene Crowe		224	126	150	500
Write-Ins		0	0	0	0
Overvotes		1	0	0	1
Undervotes		47	18	30	95
State Senator - 30th District					
Ted Ferrioli		286	159	179	624
W Mark Stringer		84	36	37	157
Write-Ins		1	1	0	2
Overvotes		0	0	0	0
Undervotes		25	12	20	57
<p>I certify the votes recorded on this abstract correctly summarize the tally of votes cast at the election indicated.</p> <p> Signature of County Clerk</p> <p style="text-align: right;">11/22/16 Date</p>					

**WHEELER COUNTY 2016
GENERAL ELECTION**

DATE: 11/08/2016

[illegible]

I certify the votes recorded on this abstract correctly summarize the tally of votes cast at the election indicated.

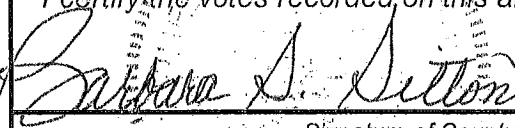
I certify the votes recorded on this ballot are correct.

Barbara S. Sutton

Signature of County Clerk

11/22/16
Date

WHEELER COUNTY 2016 GENERAL ELECTION		FOSSIL #1	MITCHELL #3	SPRAY #4	TOTALS
DATE: 11/08/2016					
<u>Fossil City Council, Mayor</u>					
Carol MacInnes		160	-	-	160
Write-Ins		37	-	-	37
Overvotes		0	-	-	0
Undervotes		69	-	-	69
<u>Mitchell City Council, Position #1</u>					
Kaylene Erb		-	50	-	50
Write Ins		-	2	-	2
Overvotes		-	0	-	0
Undervotes		-	11	-	11
<u>Mitchell City Council, Position #5</u>					
Ronald Lee Verbovanec		-	29	-	29
Write-Ins		-	15	-	15
Overvotes		-	0	-	0
Undervotes		-	19	-	19
<u>Mitchell City Council, Position #6</u>					
Steven Tripp		-	47	-	47
Write-Ins		-	1	-	1
Overvotes		-	0	-	0
Undervotes		-	15	-	15
<u>Mitchell City Council, Mayor</u>					
Wesley Erb		-	24	-	24
Vernita Jordan		-	33	-	33
Write-Ins		-	2	-	2
Overvotes		-	0	-	0
Undervotes		-	4	-	4
<u>Spray City Council, Position #4</u>					
Debra Anne Starkey		-	-	71	71
Write-Ins		-	-	5	5
Overvotes		-	-	0	0
Undervotes		-	-	17	17
<p>I certify the votes recorded on this abstract correctly summarize the tally of votes cast at the election indicated.</p> <p><i>Barbara A. Sutton</i> _____</p> <p>Signature of County Clerk</p> <p style="text-align: right;">11/22/16 Date</p>					

WHEELER COUNTY 2016 GENERAL ELECTION		FOSSIL #1	MITCHELL #3	SPRAY #4	TOTALS
DATE: 11/08/2016					
Spray City Council, Mayor					
Daniel R Allen	-	-	50	50	
Billy L Parker	-	-	38	38	
Write Ins	-	-	0	0	
Overvotes	-	-	0	0	
Undervotes	-	-	5	5	
Soil and Water, Director - At Large #1					
Adam Temple	-	3	1	4	
Matt Williams	-	4	-	4	
Herb Winters	4	-	-	4	
Misc. Write-Ins	39	10	13	62	
Overvotes	0	0	0	0	
Undervotes	353	191	222	766	
Soil and Water, Director - Zone 2					
Jeremiah P Holmes	266	136	161	563	
Write-Ins	2	0	6	8	
Overvotes	1	0	0	1	
Undervotes	127	72	69	268	
Soil and Water, Director - Zone 3					
Herb Jones	260	149	134	543	
Write-Ins	1	3	2	6	
Overvotes	0	0	0	0	
Undervotes	135	56	100	291	
Soil and Water, Director - Zone 4					
Wayne Lindquist	277	165	155	597	
Write-Ins	0	1	0	1	
Overvotes	0	0	0	0	
Undervotes	119	42	81	242	
<p>I certify the votes recorded on this abstract correctly summarize the tally of votes cast at the election indicated.</p> <p> _____</p> <p>Signature of County Clerk</p> <p style="text-align: right;">11/22/16 Date</p>					

DATE: 11/08/2016

I certify the votes recorded on this abstract correctly summarize the tally of votes cast at the election indicated.

Signature of County Clerk

Date _____

**WHEELER COUNTY 2016
GENERAL ELECTION**

DATE: 11/08/2016

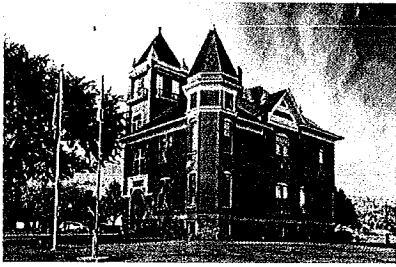
[illegible]

I certify the votes recorded on this abstract correctly summarize the tally of votes cast at the election indicated.

Barbara A. Sutton

Signature of County Clerk

11/22/16
Date



WHEELER COUNTY CLERK

701 Adams Street
PO Box 327
Fossil, OR 97830
541-763-2400—Office
541-763-2026—Fax

November 23, 2016

SOS Elections Office:

Please find enclosed with this letter the Abstract of Votes for the 2016 General Election in Wheeler County.

Thank you,

Alicia Hankins
Wheeler County Deputy Clerk
541-763-2374
ahankins@co.wheeler.or.us

[illegible]

I certify the votes recorded on this abstract correctly summarize the tally of votes cast at the election indicated.

Barbara S. Sutton 11/28/16
Signature of County Clerk Date

I certify the votes recorded on this abstract correctly summarize the tally of votes cast at the election indicated.

Barbara S. Sutton 11/28/16
Signature of County Clerk Date

I certify the votes recorded on this abstract correctly summarize the tally of votes cast at the election indicated.

Barbara S. Sutton 11/28/16
Signature of County Clerk Date