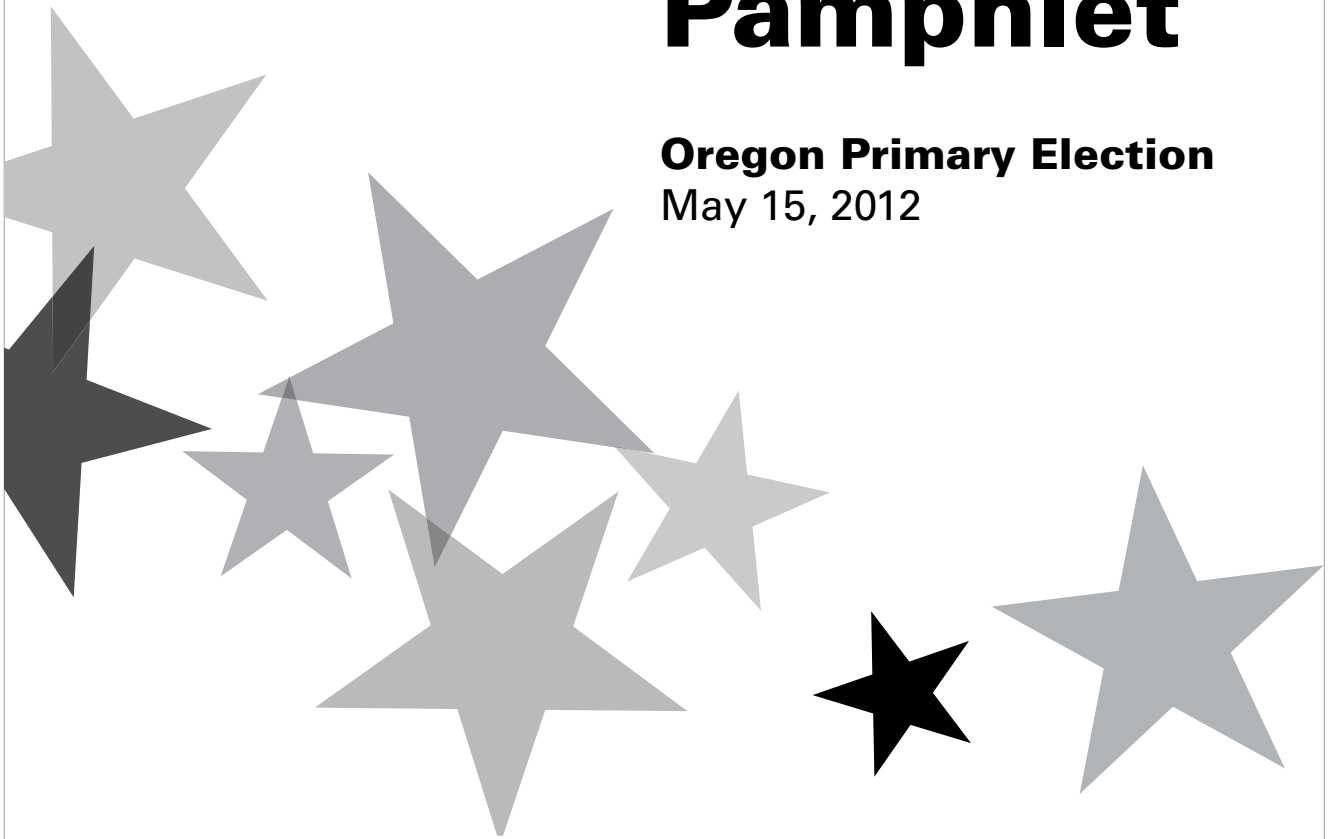




This digital document is courtesy of the Oregon State Library.

Voters' Pamphlet

Oregon Primary Election
May 15, 2012



vote!



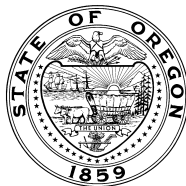
A handwritten signature in black ink, appearing to read "Kate Brown".

Kate Brown
Oregon Secretary of State

This voters' pamphlet is provided for assistance
in casting your vote by mail ballot.

KATE BROWN
SECRETARY OF STATE

BARRY PACK
DEPUTY SECRETARY OF STATE



ELECTIONS DIVISION
STEPHEN N. TROUT
DIRECTOR
255 CAPITOL ST NE, SUITE 501
SALEM, OREGON 97310
(503) 986-1518

Dear Oregon Voters,

We are happy to present the 2012 Voters' Pamphlet for the May Primary Election. On a daily basis my office provides many important services including business registration, auditing and the archiving of Oregon's history. However, the most important service we perform is distributing information to the public. Technology has provided us with the ability to share information and conduct business online. Oregon's elections website: www.oregonvotes.org offers a variety of services including voter registration, the ability to update your registration, ballot tracking and locating the nearest official ballot dropsite.

If you have not registered to vote, and would like to participate in the May Primary Election, you have until April 24, 2012. I urge all eligible Oregonians to vote and exercise the most essential right of our democratic system. Oregon offers the most convenient, accessible, secure and cost effective voting systems. We were the first in the nation to implement an all vote by mail system and we consistently have some of the nation's highest voter turnout rates. Let's continue this Oregon tradition of participation.

Please remember all ballots must be received by your county elections office by 8 p.m. on May 15, 2012. Postmarks do not count. If you have any questions about registration, filling out your ballot or services for those with disabilities, please visit us at www.oregonvotes.org, call our toll free hotline at 1-866-673-VOTE or simply scan the code below with your smartphone.

Sincerely,

A handwritten signature in black ink, appearing to read "Kate Brown".

Kate Brown
Oregon Secretary of State



Voters' Pamphlet

Primary Election

May 15, 2012

Table of Contents

General Information	
Voters' Pamphlet Information	4
List of Candidates	6
Oregon Voter Bill of Rights	13
Voters with Disabilities	36
Voter Registration Information	38
Candidates	
Democratic Candidates	7
Duties & Responsibilities of Democratic Precinct Committeepersons	12
Republican Candidates	14
Duties & Responsibilities of Republican Precinct Committeepersons	24
Nonpartisan Candidates	25
Voting Information	
Absentee Ballot Information	18
Returning Your Ballot	25
Ballot Instructions	34
Vote by Mail	35
County Elections Officials	40
Additional Information Pages	
Online Resources	5
Voters' Pamphlet Disclaimer	9
Online Voters' Guide	16
Election Results	27
Voting & Ballot Prohibitions	42
Index	
Index of Candidates	43

Voters' Pamphlet

Your official 2012 Primary Election Voters' Pamphlet provides you with information about candidates who will appear on your ballot.

It includes instructions for marking your ballot, a complete list of federal and state candidates, as well as other information to assist you through the voting process.

Candidate statements are printed as submitted. The state does not correct punctuation, grammar, syntax errors or inaccurate information. The only changes made are attempts to correct spelling errors if the word as originally submitted is not in the dictionary.

The voters' pamphlet has been compiled by the Secretary of State since 1903, when Oregon became one of the first states to provide for the printing and distribution of such a publication. One copy of the voters' pamphlet is mailed to every household in the state. Additional copies are available at the Secretary of State's office, local post offices, courthouses and all county elections offices. It can also be viewed at oregonvotes.org.

Candidates

In the primary election, candidates are divided into three sections: Democratic candidates, Republican candidates and nonpartisan candidates. Major party candidates appear before nonpartisan candidates and every two years the order in which major political party candidates appear is rotated. For 2012, Democratic candidates appear first. Candidates pay a fee, or submit signatures in lieu of paying the fee, for space in the voters' pamphlet. The information required by law—pertaining to occupation, occupational background, educational background and prior governmental experience—has been certified as true by each candidate.

Random Alphabet

Oregon statute (ORS 254.155) requires the Secretary of State to complete a random order of the letters of the alphabet to determine the order in which the names of candidates appear on the ballot.

The alphabet for the 2012 Primary Election is:

S, T, F, U, C, M, P, V, Q, B, G, K, X, N, J, H, Z, I, L, O, Y, W, A, E, D, R

Website

Most of the information contained in this voters' pamphlet is also available in the Online Voters' Guide at www.oregonvotes.org.

Español

Una versión en español de algunas partes de la Guía del Elector está a su disposición en el portal del Internet cuya dirección aparece arriba. Conscientes de que este material en línea podría no llegar adecuadamente a todos los electores que necesitan este servicio, se invita a toda persona a imprimir la versión en línea y circularla a aquellos electores que no tengan acceso a una computadora.

Important!

If your ballot is lost, destroyed, damaged or you make a mistake in marking your ballot, you may call your county elections office and request a replacement ballot. One will be mailed to you as long as you request it by May 10. After that, you may pick it up at the elections office. If you have already mailed your original ballot before you realize you made a mistake, you have cast your vote and will not be eligible for a replacement ballot.

Your voted ballot must be returned to your county elections office by 8pm election day, Tuesday, May 15, 2012.

Postmarks do not count!

County elections offices are open on election day from 7am to 8pm.

Voter Information

For questions about voter registration, ballot delivery and return, marking the ballot, requesting a replacement ballot, absentee ballots, signature requirements, the voters' pamphlet, when and where to vote, and other questions about elections and voting, call the toll-free voter information line at 1-866-ORE-VOTE (1-866-673-8683).

Voter information line representatives can provide services in both English and Spanish. TTY services for the hearing impaired are also available at 1-800-735-2900.

vote!

www.oregonvotes.org



Register to vote

You must be registered by April 24 to vote in the 2012 Primary Election



Find a dropsite

Your ballot must be received by 8 pm on May 15



My Vote

Use this new online tool to check or update your registration status and track your ballot.

for more information about voting in Oregon



oregonvotes.org



1 866 673 VOTE / 1 866 673 8683

se habla español

TTY 1 800 735 2900

for the hearing impaired

Democratic Candidates**United States President**

Barack Obama

Representative in Congress**2nd District**John Sweeney*
Joyce B Segers**Secretary of State**Kate Brown
Paul Damian Wells**State Treasurer**

Ted Wheeler

Attorney GeneralDwight Holton
Ellen Rosenblum**State Senator****28th District**

No Candidate Filed

State Representative**5th District**

Peter Buckley

55th District

John Huddle

56th District

No Candidate Filed

Republican Candidates**United States President**Rick Santorum*
Ron Paul
Newt Gingrich
Mitt Romney**Representative in Congress****2nd District**

Greg Walden

Secretary of State

Knutte Buehler

State Treasurer

No Candidate Filed

Attorney General

No Candidate Filed

State Senator**28th District**Karl Scronce
Douglas K Whitsett**State Representative****5th District**

Sandra A Abercrombie*

55th District

Mike McLane

56th DistrictTracey Liskey
Gail Whitsett**Nonpartisan Candidates****Judge of the Supreme Court****Position 2**

Dave Brewer

Position 3Timothy J Sercombe
Nena Cook
Richard C Baldwin**Position 6**

Virginia L Linder*

Judge of the Court of Appeals**Position 5**

Rick Haselton*

Position 6Tim Volpert
Allan J Arlow
James C Egan**Position 8**

Lynn R Nakamoto

Position 9

Erika Hadlock

Position 10

Rex Armstrong*

*Candidate chose not to submit a voters' pamphlet statement.

This is a complete listing of the federal and state candidates for the Primary Election, May 15, 2012, as prepared by the Secretary of State, for the counties covered in this pamphlet. On election day, your ballot may also include measures and candidates from your county and local governments.

United States President



Barack Obama

Democrat

Occupation: President of the United States

Occupational Background: Civil rights lawyer; constitutional law professor; community organizer.

Educational Background: Harvard Law School, J.D.; Columbia University, B.A.

Prior Governmental Experience: State Senator (1997-2004); U.S. Senator (2005-2008)

As President, I have dedicated myself to putting Americans back to work and restoring economic security to middle-class families. I have been driven by the basic values that make our country great: America prospers when we're all in it together, when hard work pays off and responsibility is rewarded, and when everyone—from Main Street to Wall Street—does their fair share and plays by the same rules.

Think about the America within our reach: A country that leads the world in educating its people. An America that attracts a new generation of high-tech manufacturing and high-paying jobs. A future where we're in control of our own energy, and our security and prosperity aren't so tied to unstable parts of the world.

We will not settle for a country where a few people do really well, and everyone else struggles to get by. We will not go back to an economy weakened by outsourcing, bad debt, and phony profits. We're fighting for an economy that's built to last – one built on things like education, energy, manufacturing things the rest of the world wants to buy, and restoring the values that made this country great: Hard work. Fair play. The opportunity to make it if you try. And the responsibility to reach back and help someone else make it, too.

And we're going to keep fighting, right now, to make our economy stronger; to put our friends and neighbors back to work faster; to give our children opportunity even greater than what we knew; to make sure the United States of America remains the greatest nation on Earth.

(This information furnished by Obama for America.)

The above information has not been verified for accuracy by the State of Oregon.

Representative in Congress, 2nd District



Joyce B Segers

Democrat

Occupation: Writer

Occupational Background: Small business owner for 19 years

Educational Background: B.A. Sociology, The City College of

New York; Masters Work Communications, The University of Central Florida

Prior Governmental Experience: None

"CREATING OPPORTUNITIES"

Joyce Segers, campaigning for the second time to be our congresswoman, believes we can no longer allow direct contributions by special interest groups to be the deciding factor in our elections. By limiting individual donations and accepting no special interest money, we are asking voters to invest in their future and tell big business the 2nd district is not for sale.

Create New Jobs:

We need to put Oregon back to work by facilitating jobs in emerging technologies that will be both environmentally sound and competitive in the world.

We need to create a fair tax base so that we will have the means to invest in our small businesses and provide the resources to rebuild our infrastructures and support essential public services.

As a small business owner for 19 years, Joyce treated her employees with respect, paid them a living wage and provided them with health care.

Secure Social Security and Medicare

We must dedicate ourselves to keeping these services sound while we strengthen the retirement, disability and survivors' protections that Americans have earned through their years of hard work.

Honor our Veterans:

"My husband and son both served in the military. I will fight to ensure that every veteran has access to health care and education options so they may reenter the work force with the confidence of being prepared for their future and that of their families."

Invest in Education:

It is vital to improve our education system such that it produces graduates that are competitive with the best in the world. By working with parents, teachers and future employers, a high quality education system, from universal preschool to vocational training and higher education, must be affordable and accessible.

(This information furnished by Joyce Segers.)

The above information has not been verified for accuracy by the State of Oregon.

Secretary of State



Kate Brown

Democrat

Occupation: Secretary of State

Occupational Background: Family, Juvenile Law Attorney, Instructor at Portland State University

Educational Background: University of Colorado, B.A.; Northwestern School of Law, Lewis and Clark College, J.D., Environmental Law Certificate; Senior Executive Program, Kennedy School of Government, Harvard

Prior Governmental Experience: State Representative 1991-1996; State Senator 1997-2008; Secretary of State 2009-present

Secretary of State Kate Brown

Integrity — Accountability — Effectiveness

As Secretary of State, Kate Brown has been Oregon's watchdog. She has successfully worked across party lines and kept the office focused on its most important priorities: guarding our election system, auditing state government and making it easier to start a business.

Protecting the Integrity of Our Elections

Our democracy requires that our elections system stays fair, accessible and free of fraud.

- With Kate Brown as Secretary of State, Oregon **received the highest grade in the nation for fairness, integrity and transparency** by the non-partisan Ballot Initiative Strategy Center.
- Kate **cracked down on fraud and abuse** to keep our initiative and referendum system clean.
- Kate implemented oregonvotes.org, enabling over 130,000 Oregonians to register or update their registration online. **The system improves security and accuracy and is more cost-effective.**

Keeping State Government Accountable

The Secretary of State is also state government's "Auditor in Chief." Kate Brown has put real muscle into making sure taxpayers get value for their money.

- In 2010, for every dollar spent on performance auditing, Kate identified 64 dollars in savings and efficiencies.
- During her term, Kate has identified over \$180 million dollars in savings and efficiencies.

Helping Oregon Businesses

In these tough times, everyone needs to do their part in making Oregon a better place to do business and create jobs.

- As the leader of the state's Corporation Division, Kate is creating an online business portal, making it **easier for small businesses and entrepreneurs to start or expand their business** in Oregon.

www.katebrownfororegon.com

(This information furnished by Kate Brown.)

The above information has not been verified for accuracy by the State of Oregon.

Secretary of State



Paul Damian Wells

Democrat

Occupation: CNC Machinist

Occupational Background: Electrical Engineer

Educational Background: BSEE Purdue University, 1984

Prior Governmental Experience: none

California and Washington have both adopted "Top Two" elections where all candidates compete in a single open primary, with only two candidates advancing to the general election. Why not Oregon? Open primaries apparently work just fine and Oregon's closed primaries clearly do not. This "private" Democratic primary is financed entirely with "public" money. Doesn't the Oregon Constitution require the same subsidy for all candidates?

Art I, Sect 20. Equality of privileges and immunities of citizens.

No law shall be passed granting to any citizen or class of citizens privileges, or immunities, which, upon the same terms, shall not equally belong to all citizens.

In 1987, the Libertarian Party challenged Oregon's partisan primary system - but was rebuffed by the Oregon Supreme Court:

Without a more substantial showing by the LPO that the purpose of ORS 248.008 and 249.732 is to discourage the development of political rivals of the major parties, we cannot conclude that these statutes violate Article I, section 20, or Article II, section 1, of the Oregon Constitution.

LPO v. Roberts, 305 Ore.238, 1988.

Using the pretense of a criminal trial, the court ignored the equal privileges clause, and instead, acquitted the legislature on all charges for lack of evidence. This is absurd — Supreme Court judges don't decide guilt or innocence, juries do:

O.R.C.P. Rule 51.

A. Issues. Issues arise upon the pleadings when a fact or conclusion of law is maintained by one party and controverted by the other.

B. Issues of law; how tried. An issue of law shall be tried by the court.

C. Issues of fact; how tried. The trial of all issues of fact shall be by jury ...

Someone should find a good lawyer, file a class action lawsuit, and assert that all "issues of fact" decided in LPO v. Roberts, be retried - by a jury.

(This information furnished by Paul Damian Wells.)

The above information has not been verified for accuracy by the State of Oregon.

State Treasurer

Ted Wheeler

Democrat

Occupation: Oregon State Treasurer

Occupational Background: Vice President, Copper Mountain Trust Co.

Educational Background:

Stanford University (B.A.); Columbia University (MBA); Harvard University (Master in Public Policy).

Prior Governmental Experience: Chair, Multnomah County Board of Commissioners.

Community Involvement: Portland Mountain Rescue; Neighborhood House.

LEADERSHIP ROOTED IN OREGON

A fifth generation Oregonian, Ted Wheeler shares Oregon's values, providing experience that creates jobs, improves services, promotes efficiency, and puts Oregon on stable financial footing.

"Ted Wheeler is a leader who gets things done for Oregon. Our future depends on a strong economy, and he will ensure that future through formulating new, innovative economic development strategies and fostering a healthy business environment. I am honored to endorse Ted Wheeler."
Governor John Kitzhaber

DELIVERING RESULTS

Under Ted Wheeler's management, the Treasury has:

- Protected Oregon's finances by holding the line on debt.
- Saved taxpayers millions through profitable investments, boosting the pension plan and the State Common School Fund.
- Re-launched the Oregon College Savings Plan and cut fees in half.
- Earned an upgrade in Oregon's credit rating.
- Stood up for middle class families by recovering damages to public assets from bad actors on Wall Street.

FOCUSED ON OREGON'S FUTURE

Ted Wheeler listens to and learns from the people he serves. He has a plan to:

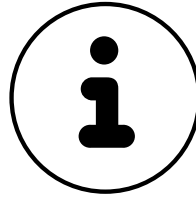
- Create an economic development powerhouse to provide business capital, streamline bureaucracy, and encourage public-private partnerships.
- Make higher education, including technical training programs, more affordable.
- Fund community infrastructure projects through a coordinated, multistate financing mechanism.

Endorsed by Governor John Kitzhaber; Governor Ted Kulongoski; Governor Barbara Roberts; American Federation of Teachers-Oregon (AFT-Oregon); Oregon AFSCME; Basic Rights Oregon PAC; Oregon State Council for Retired Citizens; Oregon State Fire Fighters Council; Oregon State Building Trades and Construction Council; Oregon Business Association; Planned Parenthood PAC; SEIU Oregon State Council; United Food and Commercial Worker's Union Local 555.

www.TedWheeler.com

(This information furnished by Friends of Ted Wheeler.)

The above information has not been verified for accuracy by the State of Oregon.



Candidate statements are printed as submitted

The state does not correct punctuation, grammar, syntax errors or inaccurate information.

The only changes made are attempts to correct spelling errors if the word as originally submitted is not in the dictionary.

for more information about voting in Oregon

➤ **oregonvotes.org**



1 866 673 VOTE / 1 866 673 8683

se habla español

TTY 1 800 735 2900

for the hearing impaired

Attorney General



Dwight Holton

Democrat

Occupation: Attorney; Adjunct Professor, Lewis and Clark Law School

Occupational Background: U.S. Attorney for Oregon; Assistant U.S. Attorney

Educational Background: University of Virginia Law School J.D.; Brown University B.A.

Prior Governmental Experience: U.S. Department of Justice

The Best Experience

The Right Priorities

Endorsed by 46 Oregon Sheriffs and District Attorneys

Why does Dwight have the overwhelming support of Oregon's law enforcement community? Because he has the experience, priorities and track record we need.

Keeping Us Safe

Dwight Holton was a tough federal prosecutor and served as United States Attorney for Oregon. Over the last 15 years, he appeared in court over 1000 times, prosecuting gang kingpins, mortgage fraud, and drug traffickers.

"Dwight Holton's integrity, courtroom success and good judgment make him the clear choice for Attorney General."

Multnomah County District Attorney Michael D. Schrunk

Preventing Crime Before It Starts

Oregon's teachers endorse Dwight because he knows it's not enough to be tough on crime — we must be smart as well. He demands drug addiction prevention and treatment to address root causes and break the expensive, destructive cycle of crime.

Protecting Kids and Families

A father of two young children, Dwight is especially protective of vulnerable kids and families. He helped crack down on sex offenders who use the internet to prey on children and made it a priority to get illegal guns out of the hands of domestic violence abusers.

"Dwight is a tremendous advocate for victims of abuse and violence. We can count on Dwight to put people first."

Anne Pratt, Vice President, Crime Victims United

Champion for Consumers and the Middle Class

Dwight cracked down on mortgage and securities fraud and scams that threaten people's life savings and jailed corporate polluters.

"Holton has built a reputation as a dogged prosecutor of environmental crimes and those perpetrated by white-collar criminals."

The Oregonian (2/5/2010)

Endorsements include:

Oregon Education Association, Basic Rights Oregon PAC, Alliance of Minority Chambers, and NARAL Pro-Choice Oregon PAC

More at HoltonforOregon.com

(This information furnished by Holton For Oregon.)

The above information has not been verified for accuracy by the State of Oregon.

Attorney General



Ellen Rosenblum

Democrat

Occupation: Oregon Court of Appeals Judge (retired)

Occupational Background: Trial judge; federal prosecutor; attorney

Educational Background:

University of Oregon, B.S., J.D.

Prior Governmental Experience: Multnomah County Circuit Court Judge

The People's Attorney General

"For 36 years I've advocated for and protected the people of Oregon: as a tough federal prosecutor, compassionate attorney in a small Eugene firm, and hardworking, fair judge. As your Attorney General, I will stand up for you against the rich and powerful. I'll bring these principles to the job everyday: fighting crime while looking out for children, seniors, and the vulnerable in our communities."

Ellen Rosenblum

Looking Out for Us

"Ellen is the best candidate to stand up for our seniors against scams and identity theft, protect all women's family planning choices, and ensure Oregon's environmental legacy."

Governor Barbara Roberts

Zero Tolerance for Predators and Abusers

"Ellen's record shows she'll stop sexual predators preying on our children. As Oregon's first woman Attorney General, we can count on her to go after domestic abusers and deadbeat parents."

U.S. Attorney for Oregon Kris Olson

Enforcing the Rules to Protect our Homes and Small Businesses

"Ellen understands what it takes to grow a business. She'll protect Oregon's economy from illegal activity from foreign corporations, polluters, and abusive mortgage lenders."

Mike Roach and Kim Osgood, Paloma Clothing

Standing Up for Education

"Ellen knows our schools need our support to succeed. She decided against a Lottery Commission rule that gave away big profits at the expense of public schools."

Autumn Greenwood, Salem, Special Education Teacher

Also supporting Ellen:

NARAL Pro-Choice Oregon PAC

Basic Rights Oregon PAC

Oregon AFSCME

EMILY's List

Congressman Earl Blumenauer

Attorney General Hardy Myers

Attorney General Dave Frohnmayer

Labor Commissioner Brad Avakian

Secretary of State Norma Paulus

Multnomah County Chair Beverly Stein

Bob Stacey, former executive director, 1000 Friends of Oregon

Irvin H. Fletcher, President Emeritus, Oregon AFL-CIO

10 Former Presidents of the Oregon State Bar

Visit ellenrosenblum.com!

(This information furnished by Elect Ellen Rosenblum for Attorney General.)

The above information has not been verified for accuracy by the State of Oregon.

State Representative, 5th District



Peter Buckley

Democrat

Occupation: Oregon State Representative, District 5, 2005 to present; Co-Chair, Joint Committee on Ways & Means

Occupational Background: Director, Writer, Actor, Producer, Administrator in regional theatre, 1979 to 2002; Radio commentator, 1988 to 2002.

Educational Background: B.A., University of Santa Clara, 1979

Prior Governmental Experience: Chair, House Education Committee, 2007 to 2009; City Commission, Arcata, California, 1994

PROGRESS, BUT A LONG WAY TO GO

Oregon is moving in the right direction.

We're redesigning how health care is delivered in our state, finally taking the necessary steps to hold down costs while still expanding access to quality care. And the savings that we will realize from this effort must, in my view, go directly into education.

It's past time, but the path is open. In the last two legislative sessions, we have not only invested in early childhood education, but we have set the framework for investments in the full spectrum of education, from early childhood through K-12, our community colleges and our universities.

In spite of the slow economic recovery in our country and in spite of the toxic politics practiced on the national level, we're finding the way to work together to meet the priorities we all share. We're not there yet, but we're getting there.

I'm determined to keep working until our students can thrive, our families have living wage jobs and strong communities, and our future is clearly brighter than our past. I'm grateful for your support.

(This information furnished by Committee to Re-Elect Peter Buckley.)

The above information has not been verified for accuracy by the State of Oregon.

State Representative, 55th District



John Huddle

Democrat

Occupation: Retired; Advocate

Occupational Background: Adjunct Faculty, School Psychologist, Special Education Director and Teacher

Educational Background: Ed.D, Vanderbilt University; M.A.T, BA, National College of Education

Prior Governmental Experience: Special Education Director; Treasurer, Chair -Legislative Committee, Oregon School Psychologist's Association; Chair, Subcommittee on Adoption Law, Arc-TN

Military Service:

Sgt. US Army Reserve; Sp5, US Army (Vietnam era)

**John Huddle
Advocate for the People**

We need government that is sensitive to the people not political agendas. If elected, I vow to put your needs and the needs of our community first.

Education

After spending 25 years working in school districts, I know firsthand the challenges that come with providing quality education in rural communities. I will fight to ensure our children have an even playing field and equal opportunities.

Jobs for working families

High unemployment has severely affected the families of HD 55. I will fight for family wage jobs right here in our community, not overseas.

Veterans and Healthcare

Our veterans need employment support, suicide prevention and quality care as they age. It's my goal to open a Veteran's Home and a State Veteran's Cemetery for our loved ones. Additionally, I will fight to make healthcare affordable and accessible to all rural Oregonians.

Public Safety

Every community deserves safe streets and security. I will fight to ensure our Sheriff's Departments get the funding and training they need to keep us safe.

Consumer Protection

Big banks and corporations must be held the same rules of fair play as consumers. If elected I will fight for accountability from Wall Street banks and shady business practices.

Endorsements

"Central Oregon needs leaders with long-term practical vision. John Huddle is that man" Sunny St Claire, Retired Office Manager.

"John is a watchdog for public processes so they will be open and inclusive" Anne Gregersen, Retired Teacher.

Ronald J Sharbaugh
Wendell Evers, Retired Administrator for the Blind
David Stranahan
David Crider, Gilchrist, Oregon
Dan Harshbarger, Citizen Activist

(This information furnished by Friends of John Huddle.)

The above information has not been verified for accuracy by the State of Oregon.

A Message from Democratic Party of Oregon Chair Meredith Wood Smith:

Today, your voice and vote are needed more than ever before. Corporate special interests are trying to drown out the voice of average Americans with highly-paid lobbyists and unlimited campaign spending. While Republicans fall in line for the 1%, the Democratic Party is fighting for working men and women. Democrats know we must look out for those struggling in a tough economy, protect homeowners from unfair lending practices, invest in public education, and expand access to affordable health care.

The Democratic Party of Oregon is comprised of volunteers just like you who make our party what it is.

I invite you to join the Democratic Party of Oregon as a Precinct Committee Person and work with us to stand up for the 99%.

What are Precinct Committee Persons and what do they do?

Representative democracy only works if people like you are informed, involved and active. You understand that democracy is not a spectator sport, and as a Precinct Committee Person, you are the very foundation of what we do -- you have the power to enact change by:

- Registering voters and increasing voter turn-out in your neighborhood
- Electing Democratic county, state and national party leaders
- Keeping the Democratic Party and elected leaders informed about the issues important to you and your community.
- Making sure the Democratic Party represents you
- Determining the direction of the Democratic Party

How do I become a Precinct Committee Person?

First you must be a registered Democrat. If you filed with your county elections office as a Precinct Committee Person candidate for the May primary, your name will appear on the ballot. If not, you may write in your name on the ballot. To be eligible to win by write-in, you must receive a minimum of three votes. This can often be accomplished in your own household, but you are best served by reaching out to as many neighbors as possible. You can also be appointed by your local county committee by attending a meeting and expressing interest. Find out more at www.dpo.org.

Be empowered!

The job of Precinct Committee Persons can be large or small, depending on your own initiative. If you accept, you will be called upon to perform some basic activities like:

- Helping distribute materials to your neighbors
- Organizing and participating in phone banks
- Recruiting new volunteers
- Attending local trainings and meetings

The Democratic Party of Oregon encourages new leadership and creates opportunities for all Democrats to fully participate in activities of the party. Many of our elected leaders in Oregon started off as Precinct Committee Persons in their communities.

To get involved, contact us at:

Democratic Party of Oregon, 232 NE 9th Ave., Portland, OR 97232
Phone: 503-224-8200, info@dpo.org www.dpo.org

(This information furnished by Democratic Party of Oregon.)

You have the right to **vote!**

If you are a US citizen, live in Oregon, are 18 years old and have registered to vote.

- **You have the right** to vote even if you are homeless.
- **You have the right** to vote if you have been convicted of a felony but have been released from custody, even if you are on probation or parole.
- **You have the right** to vote even if you have a guardian and even if you need help reading or filling out your ballot.
- **You have the right** to vote or cast your ballot if you are in line by 8 PM on Election Day.
- **You have the right** to know if you are registered to vote.
- **You have the right** to choose whether or not you want to register as a member of a political party.
- **You have the right** to use a signature stamp or other mark but first you have to fill out a form. No one can sign for you.
- **You have the right** to ask for help from elections staff or from a friend or family member. There are some people who cannot help you vote, for example, your boss or a union officer from your job.
- **You have the right** to a secret vote. You do not have to tell anyone how you voted.
- **You have the right** to get a "provisional ballot," even if you are told you are not registered to vote.
- **You have the right** to get a new ballot if you make a mistake.
- **You have the right** to vote for the person you want. You can write in someone else's name if you don't like the choices on your ballot.
- **You have the right** to vote "yes" or "no" on any issue on your ballot.
- **You have the right** to leave some choices blank on your ballot. The choices you do mark will still count.
- **You have the right** to use a voting system for all Federal Elections that makes it equally possible for people with disabilities to vote privately and independently.
- **You have the right** to know if your ballot, including a "provisional ballot," was accepted for counting.
- **You have the right** to file a complaint if you think your voting rights have been denied.

(Oregon Constitution, Sections 2 and 3; ORS Chapters 137, 246, 247, and 254; Vote By Mail Manual; Help America Vote Act of 2002; OAR 165-001-0090 and 165-007-0030)

for more information about voter rights:



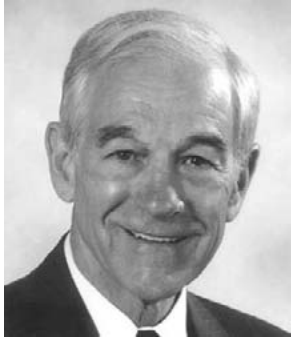
1 866 673 VOTE / 1 866 673 8683

se habla español

TTY 1 800 735 2900

for the hearing impaired

United States President



Ron Paul

Republican

Occupation: Member of Congress

Occupational Background: OB/GYN

Educational Background: Gettysburg College, B.S.;

Duke University, M.D.

Prior Governmental Experience: Member of Congress (1976-1977, 1979-1985, 1996-Present)

Congressman Ron Paul is America's foremost champion of constitutional government, individual liberty, free markets, and sound money. He is married to his high school sweetheart, Carol, and they have five children and 18 grandchildren. Ron Paul served in the Air Force and the Air National Guard during the 1960s, and, as an OB/GYN, he has delivered over 4,000 babies.

In 1976, Ron Paul was one of only four congressmen to endorse Ronald Reagan over President Ford.

Dr. Paul has earned a reputation as Congress' most principled member by voting against any legislation that violates the Constitution, raises taxes, or infringes on individual liberty.

For years, Congressman Paul warned about the Federal Reserve's dangerous policies - even predicting the collapse of the housing bubble and the financial crisis years in advance. Congressman Paul, and the movement he has inspired, have made the Fed's actions a central issue in American politics.

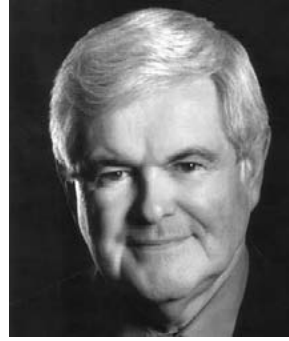
Dr. Paul's knowledge of, and leadership on, the issue of monetary policy was recognized by the House leadership when they appointed him Chairman of the House Subcommittee on Monetary Policy, Technology and Trade in 2011.

As President, Ron Paul will fight to pass his Plan to Restore America, which cuts a trillion dollars from the federal budget in one year by eliminating five cabinet departments - Education, Energy, HUD, Commerce, and Interior- ending foreign aid and corporate welfare, and rolling back all other domestic spending to fiscal year 2006 levels. The plan balances the federal budget in three years, and it stops federal agencies from enforcing unconstitutional regulations stemming from "ObamaCare," Dodd-Frank, and Sarbanes-Oxley. The plan also permanently extends the Bush-era tax cuts, repeals the estate tax, ends taxation on the repatriation of foreign capital, reduces the corporate tax rate to 15%, and ends all taxation on savings.

(This information furnished by Ron Paul Presidential Campaign Committee.)

The above information has not been verified for accuracy by the State of Oregon.

United States President



Newt Gingrich

Republican

Occupation: Self Employed

Occupational Background: Speaker of the House, United States House of Representatives, (1995-1999); House Minority Whip, 1989-1995; Representative, United States

House of Representatives, (1979-1999); Professor, West Georgia College, (1974-1979); Author, Professional Speaker, Historian

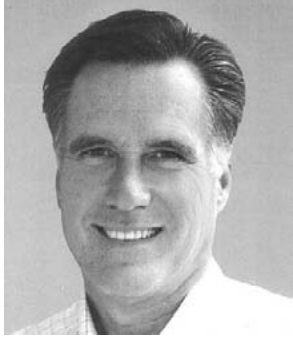
Educational Background: Emory University, BA; Tulane University MA/PHD, Modern European History

Prior Governmental Experience: United States Congress

America is at a crossroads. We can choose to continue the same failed policies, with government encroaching on more parts of our lives, with entrenched and unaccountable bureaucracy, with too much dependency, with weakness abroad. Or we can choose to rebuild the America we love—the America of freedom and independence, of work and opportunity, and of strength in the world. To choose renewal will require extraordinary leadership. Timid alternatives and the path of least resistance are unacceptable. *I believe this historic moment demands a bold conservative with bold solutions.* It will require upending the old order in Washington that has lost the trust of the American people and protects the current dysfunction. Before I led the Republican Revolution in 1994, winning the first reelected Republican House in more than 40 years, few thought it was possible, even in our own party. We did it by offering Americans a real choice and asking them to help us force change. We reformed welfare, lifting millions of Americans from poverty. We balanced the budget for four straight years—the first time since the 1920s. We passed the biggest capital gains tax cut in history, helping create 11 million jobs. And we did it all while paying down \$400 billion from the national debt. It can be done. But in 2012, it will take a big change election to get bold solutions. *This November, we must offer the American people a genuine choice.* With your help, we can rebuild the America we love.

(This information furnished by Newt Gingrich.)

The above information has not been verified for accuracy by the State of Oregon.

United States President

Mitt Romney

Republican

Occupation: Former Governor of Massachusetts

Occupational Background: I am not a career politician. I spent most of my life in the private sector, where I helped launch or rebuild more than

100 companies, including household names such as Staples, Bright Horizons, and The Sports Authority. I also have a record of accomplishment as a public servant, having served as Governor of Massachusetts and CEO of the 2002 Winter Olympic Games in Salt Lake City.

Educational Background: JD, Harvard Law School; MBA, Harvard Business School; BA, Brigham Young University.

Prior Governmental Experience: As Governor of Massachusetts, I cut taxes 19 times while balancing the budget four years in a row. I cut red tape for small businesses, signed into law job-creating incentives, and fought hard to bring new businesses to the state. By the end of my term, the state had amassed a \$2 billion rainy-day fund.

I am running for president to get America back to work, protect our national security, and ensure our country remains the leader of the free world.

In 1999, the Winter Olympics were on the verge of collapse amid corruption allegations. I was asked to take over. I revamped the organization's leadership, trimmed the budget, and restored public confidence. In the end, we staged one of the most successful games of all time.

As president, I will repeal the national healthcare law. I'll get rid of job-killing regulations, open new markets for American exports, and unlock America's energy resources. I'll reduce taxes and bring an end to runaway spending and borrowing in Washington. I'll make the federal government simpler, smaller, and smarter.

I will reverse the defense cuts of the past three years, rebuild our military, and ensure that this century will be another American Century. Together we can create an Opportunity Society where hard work, education, and risk-taking allow people to achieve their dreams.

(This information furnished by Mitt Romney.)

The above information has not been verified for accuracy by the State of Oregon.

Representative in Congress, 2nd District

Greg Walden

Republican

Occupation: Small Business Owner; U.S. Representative

Occupational Background: Small Business Owner since 1986

Educational Background:

Graduate: University of Oregon; Hood River Valley High

Prior Governmental Experience: Oregon Legislator

Stability and Security for Small Business Owners and Hardworking Taxpayers.

I was raised on a cherry orchard in The Dalles and have lived most of my life in the Columbia Gorge. Since 1986, my wife and I have owned a small business, so we understand the challenges that hardworking taxpayers face today.

We are in the longest streak of high unemployment since the Great Depression. Americans deserve a better solution to the challenges that face our country than more government rules, red tape, and bureaucracy.

The current administration has more than 3,000 regulations in development. Hardworking taxpayers don't need more unnecessary regulations; we need commonsense reforms that reduce the size, scope, and cost of the federal government.

We Must Prevent a Future Full of Debt, Doubt and Despair.

Let's be realistic: We don't have deficits because Americans are taxed too little. We have deficits because Washington spends too much. It's time for government to tighten its belt and balance its budget, just like families do every month.

It is immoral to keep passing along such debt to our children and our grandchildren, and Washington's budget mess means we won't be able to afford critical programs like Medicare and Social Security.

Time for a Fair Shake and Real Solutions.

America must be a place where hard work is still rewarded. A better solution exists for the challenges that face our country. We can change forest policy and put people back to work, improve rural health care, and promote Oregon's wonderful agriculture. We can reform the tax code, eliminate loopholes, lower rates, and create economic growth.

And as always, we must continue to strongly support our veterans and active duty military. We owe our freedom to them.

Let's get America working again. I'd appreciate your support in this effort.

(This information furnished by Walden for Congress.)

The above information has not been verified for accuracy by the State of Oregon.

Secretary of State

Knute Buehler

Republican

Occupation: Physician; small business owner; inventor

Occupational Background: Orthopedic Surgeon; Medical Product Design

Educational Background:

Rhodes Scholar, Oxford University, M.A., Politics and Economics; Johns Hopkins University, M.D.; Oregon State University; Roseburg High School

Prior Governmental Experience: none

Community Service: Board of Directors: St. Charles Health Systems; Ford Family Foundation; Oregon League of Minority Voters; OSU-Cascades

AN OREGON STORY

Raised in Roseburg, I attended public schools and paid for college by working in Oregon's forests and driving delivery trucks. Over 15 years in Bend, I've led a 170 employee medical practice, helped thousands of patients walk without pain, invented medical technology sold globally, and raised a family. This state's given me a lot; I'd like to give back.

OREGON'S IN TROUBLE

We've fallen behind other states in employment, education, and hunger. Oregon ranks 48th in economic comparisons and unemployment is 8.8% (15% in some counties). We have one of the nation's shortest school years, and only 66% of high school students graduate in 4 years. Oregon families rank 3rd hungriest in the nation. It seems career politicians cater more to those who fund their campaigns than those in need.

GET OREGON WORKING

I know Oregon can do better. Our vision of a healthy, vibrant people is suffocating under a lack of state leadership. Government is not working to help Oregonians prosper. The Secretary of State's office is supposed to support entrepreneurs, but currently just processes paperwork and maintains a database. We can do better. I'll work to retain the jobs we have while attracting new ones.

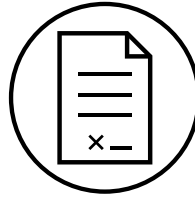
WORKING FOR WHAT'S IMPORTANT

We need to direct less money to government and more money to Oregon families in need. Our priorities need to be education, public safety, and helping Oregonians, who need support, build a better future. I'll bring new responsibility to Salem so your tax dollars get to those in need. I've fought special interests and for campaign finance reforms, and I'll continue fighting for you.

www.Buehler2012.com

(This information furnished by Knute Buehler for Secretary of State.)

The above information has not been verified for accuracy by the State of Oregon.



Online Voters' Guide

The information contained in this voters' pamphlet is also available in the Online Voters' Guide

www.oregonvotes.org

Español

Una versión en español de algunas partes de la Guía del Elector está a su disposición en el portal del Internet cuya dirección aparece arriba. Conscientes de que este material en línea podría no llegar adecuadamente a todos los electores que necesitan este servicio, se invita a toda persona a imprimir la versión en línea y circularla a aquellos electores que no tengan acceso a una computadora.

for more information about voting in Oregon:

➤ **oregonvotes.org**



1 866 673 VOTE / 1 866 673 8683

se habla español

TTY 1 800 735 2900

for the hearing impaired

State Senator, 28th District



Karl Scronce

Republican

Occupation: Farmer

Occupational Background: Oregon Wheat Growers League, Past President; National Association of Wheat Growers, Past President; Oregonians For Food and

Shelter, Past Chairman; BNSF Railway, Ag Rail Council; Klamath Water Users Association; Upper Klamath Water Users Association; Monsanto Grower Advisory Committee

Educational Background: Lost River High School, Merrill, Oregon; Oregon State University, Business Administration

Prior Governmental Experience: Klamath County Natural Resource Advisory Committee

I am honored my campaign has been embraced by many Republican voters who recognize District 28 is in need of a true statesman to represent them in the Oregon Legislature.

My priorities: JOB CREATION-EDUCATION-REPRESENTATION

Job Creation — Like the rest of the country, our economy has experienced a severe recession that has been compounded by excessive taxes, fees, and regulations.

I will tirelessly seek business expansion and economic opportunities, both new and existing, with an end goal of making District 28 a premier destination to live and work.

I will seek to identify, with you — all of my constituents, and not just select special interests - legislative opportunities to limit the impacts of job killing regulation. I vow to work with regulating agencies for fairness within the law.

Education — I will develop a broad base of support focusing our educational resources towards a solid citizenry and workforce for tomorrow. A successful education system plays a critical role in attracting business to our state, and is an essential ingredient to any successful economic development program.

Representation — Our founding fathers brilliantly gifted us with a grassroots form of government. I will carry on their vision for our representative form of government.

Whenever you as a constituent require assistance or voice opinions concerning State Government, you will be met with a smile and warm hello; I will represent the best interests of every community in District 28.

You deserve an engaged and respected Senator to deliver positive results for our District. You have my word; I will be that type of Senator.

(This information furnished by Committee To Elect Karl Scronce.)

The above information has not been verified for accuracy by the State of Oregon.

State Senator, 28th District



Douglas K Whitsett

Republican

Occupation: State Senator; Veterinarian; farmer, small business owner.

Occupational Background: Principle owner and manager Klamath Animal Clinic and Supply (retired), owned and

managed rental housing, owned and operated three-farm equine breeding and marketing operation.

Educational Background: Doctor of Veterinary Medicine, Washington State University 1968; Associate of Arts, Central Oregon College 1963; Crook County High School 1961.

Prior Governmental Experience: Oregon State Senate 2005 to present; Joint Ways and Means Committee, Emergency Board, Senate Judiciary Committee, Court Facilities and Technologies Committee, Office of Administrative Hearings Oversight Committee.

FAMILY: three adult daughters and wife Gail.

COMMUNITY SERVICE: Rotary; past president Oregon Veterinary Medical Association, Water for Life, Klamath County Cattlemen's Association; leader in State and local water issues; lecturer at state and regional veterinary conferences.

What has Doug offered in Salem?

ACCESSIBILITY: Effective government requires citizen participation. Doug's weekly newsletter and radio commentary serve to keep people informed. He tries to be available to Oregonians virtually 24/7 regardless of affiliation or location.

KNOWLEDGE: Doug has a broad understanding of commercial retailing, ranching and irrigated agriculture; a passion for preserving the rural lifestyle, culture and economy.

FISCAL RESPONSIBILITY when balancing the budget; working to curtail Oregon's spending addiction, opposing tax and fee increases; identifying inefficiencies and creating accountability in government spending.

EXPERIENCE: Doug has actively participated in our rural communities for more than 35 years. He understands the unique needs that are required for our area to thrive and for our economies to grow.

COMMON SENSE approach to reaching meaningful solutions through bipartisan work with political leaders: to know when to reach agreement and when not to concede.

COMMITMENT to focus on core government priorities, create smaller, more efficient government through reducing regulation, lowering taxes and fees, and allowing hard working families and small businesses to keep more of their own hard earned money.

I want to continue to work for you in Salem. I am asking for your vote in the May Primary election.

(This information furnished by Friends of Doug Whitsett.)

The above information has not been verified for accuracy by the State of Oregon.

State Representative, 55th District

Mike McLane

Republican

Occupation: State Representative; Attorney; Major, Oregon Air National Guard.

Occupational Background: Lawyer; Publishing Company CEO.

Educational Background: J.D., Lewis and Clark Law School; B.S., Agricultural Resource Economics, Oregon State University; Condon High School.

Prior Governmental Experience: State Representative; Joint Ways and Means Committee; Circuit Court Judge, pro tem, Deschutes County; Law Clerk, Oregon Supreme Court, US Attorney's Office.

MILITARY EXPERIENCE: Staff Judge Advocate, Kingsley Field, 173rd Fighter Wing; Judge Advocate, 142nd Fighter Wing, 41st Infantry Brigade.

ABOUT MIKE McLANE

Mike grew up in Condon, Oregon and was active in 4-H, FFA, and sports. He worked wheat and cattle ranches and the family alfalfa farm. Today, Mike lives with his wife and their three children on a small farm in Crook County. As our State Representative, he is working to improve our economy, strengthen our schools, and bring accountability to the way our tax dollars are spent.

MIKE McLANE FOR STATE REPRESENTATIVE BRINGING BACK OREGON

BRINGING BACK JOBS

Mike McLane is fighting for local jobs — and winning the fight. When the Oregon Department of Revenue tried to circumvent an enterprise zone agreement in Prineville, Mike pushed back. He introduced legislation to fix the problem. Mike's success is helping our communities attract more new jobs. That's the type of leadership we need.

BRINGING BACK QUALITY SCHOOLS

Last session, Mike supported several reforms that are improving our schools and helping school districts better plan budgets. From giving parents and students more choice to encouraging innovation, Mike is giving us the tools we need to strengthen our education system. As a member of the Ways and Means Committee, Mike also ensured schools were funded first — before any other budgets.

BRINGING BACK FISCAL DISCIPLINE

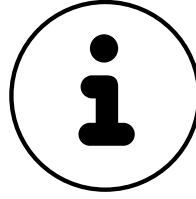
As a first-term legislator Mike was selected to serve on the important Ways and Means Committee where he is helping to reign in spending and pushing for more budget accountability. He's asking the tough questions and fighting to reduce waste.

Learn more at:

www.VoteMcLane.com

(This information furnished by Committee to Elect Mike McLane.)

The above information has not been verified for accuracy by the State of Oregon.



Update your registration if you are away from home

The post office will not forward your ballot.

You can request an **absentee ballot** if you will not be home during an election. The ballot will be sent to the alternate address you provide.

for more information about voting in Oregon

➤ **oregonvotes.org**



1 866 673 VOTE / 1 866 673 8683

se habla español

TTY 1 800 735 2900

for the hearing impaired

State Representative, 56th District



Tracey Liskey

Republican

Occupation: Farmer and Rancher; First Vice President, Oregon Farm Bureau

Occupational Background: Third generation farmer and rancher; served 17 years on the Board of Directors of the

Oregon Farm Bureau

Educational Background: Associate Degree, Shasta College

Prior Governmental Experience: None

**Tracey Liskey
A Common Sense Problem Solver**

Our district is rich in both natural and human resources, but all too often our elected officials have been a road block, stifling our economic growth. That is why I look forward to bringing common sense solutions and our home grown attitude to Salem.

Job Creator

As a job creator I understand the everyday struggles of Oregon's small business owners. Red tape and overregulation are inhibiting our economic recovery which leads to unacceptable unemployment rates. Salem needs more job creators that understand what it takes to sign the front of a paycheck - not just how to sign the back of one.

Economic Growth

Oregon has creative and passionate people who are ready and willing to create jobs and rebuild our economy. We need to give them the opportunity to succeed by getting government regulations out of their way. That is why my first priority will be to introduce a plan to restore our economy, while protecting the needs of our most vulnerable: our children and senior citizens.

Protecting Our Way of Life

We're facing serious problems. Our natural resources are being controlled by agencies that don't share our interests or understand our tradition of agricultural prosperity. They don't comprehend that we can reasonably and responsibly harvest, manage, and grow our crops, timber, and livestock. I will work alongside those pursuing job creation to rein in those agencies and allow our homegrown solutions to flourish.

Endorsed By:

- Oregon Farm Bureau Federation
- Roger Beyer, AG-PAC Chairman
- Oregon Nurseries PAC
- Oregon Cattle PAC
- Oregon Business Association
- Alan Eberlein
- Neal Eberlein
- Rodney Kucera
- Jodi Kucera
- Frank Kvonon
- Robert Flowers

VOTE TRACEY LISKEY FOR STATE REPRESENTATIVE
www.traceyliskey.com

(This information furnished by Friends of Tracey Liskey.)

The above information has not been verified for accuracy by the State of Oregon.

State Representative, 56th District



Gail Whitsett

Republican

Occupation: Legislative Senate Chief of Staff; Small business and farm owner

Occupational Background: Professional Geologist for SOHIO; owner of Sunset Ridge Farms; Legislative Chief of

Staff for Oregon Senate District 28 Klamath and Lake Counties 2005-2012.

Educational Background: M.S. Degree in Geology OSU 1981; Princeton University Field Station; B.S. Degree Geology OSU College of Honors; Henley High School graduate 1974

Prior Governmental Experience: Oregon Senate Legislative Chief of Staff; Elected Klamath County Republican Party Precinct Person; Testified before Senate and House Committees on water, power and natural resource issues; Gubernatorial appointment to the Hatfield Upper Klamath Basin Working Group; appointed to the Upper Klamath Lake TMDL Science Advisory panel; Scientific peer reviewer for Lost River Sub-Basin Hydrology Report Oregon Water Resources Department; Written scientific testimony for the National Academy of Sciences on Upper Klamath Lake.

Family: Husband and three daughters; two grandchildren

Community Service: Member: NRA; Oregon Hunters Association; Klamath County Retired Educators Assoc.; Klamath Art Association; Klamath County Chamber of Commerce; Friends of Crater Lake; 26 year member of American Assoc. of Petroleum Geologists; former United States Equestrian Federation licensed Technical Delegate.

Gail will work toward:

- CREATING PRIVATE JOBS and PUTTING PEOPLE BACK TO WORK
- PROMOTING SMALL BUSINESSES and REDUCING UNNEEDED REGULATIONS
- IMPROVING EDUCATION QUALITY in OREGON
- SUPPORTING VETERANS and ELDERLY SERVICES
- UTILIZING OUR FOREST, NATURAL RESOURCES and GEOTHERMAL ENERGY
- PRESERVING HYDROELECTRIC POWER and the KLAMATH DAMS

Gail is endorsed by retiring HD 56 Representative Bill Garrard who says:

" Based on my experience, Gail Whitsett will make an excellent State Representative and will well represent the folks of District 56. I urge you to join me in voting for Gail Whitsett for State Rep."

Gail's other endorsements include:

- Retired State Senator Steve Harper, Lake/Klamath Counties
- Former Klamath County Commissioner Nell Kuonen,
- Retired State Representative George Gilman, Klamath/ Lake Co.
- Roger Beyer, AG PAC Chairman
- Oregonians In Action PAC
- Oregon Small Business Coalition
- Oregon Cattle PAC
- Oregon Family Farm Association PAC
- Water for Life, Inc.

(This information furnished by Gail Whitsett for Oregon.)

The above information has not been verified for accuracy by the State of Oregon.

County Commissioner, Klamath County, Position 1



Al Switzer

Republican

Occupation: Klamath County Commissioner 1997-Present; sheep producer 1978-Present

Occupational Background: Bank operations officer 1962-1971; owner Switzer's Janitorial Service 1971-1998; owner

Klamath Sweeping 1974-1996

Educational Background: L.A. Valley College, 3 years

Prior Governmental Experience: Klamath County Commissioner 1997-Present; Klamath County Budget Committee, 1991-1997; President 4-H Leaders Association 1984

Personal: Wife, Vicki 47 years; two children; six grandchildren; resident of Klamath County 43 years

Member: Association of Oregon Counties, Board of Directors 1997-2010, President 2004; O & C Timber Counties Board of Directors 1998-2010, Treasurer and executive board member 2010-present; Klamath Basin Senior Citizens Council 1998-2008, recipient 2003 Senior Service Award; Klamath County Rotary 1989-present; recipient Klamath County Chamber of Commerce Distinguished Service Award.

"Let's Move Klamath County Ahead"

Klamath County has been through times of prosperity and times of economic downturn. During my combined time of twenty year on the Klamath County budget committee and as a county commissioner I have used my banking and business backgrounds to deliver the maximum benefits to the citizens of Klamath County.

- Renovated vacant Health Dept. building to house sheriffs operation saving taxpayers \$50,000 per year.
- Moving Community Corrections to a new, State paid for building saving taxpayers \$75,000 per year.
- FEMA controversy resolved: generated \$1.7 million dollars, retiring Court House bonds. Saved taxpayers over \$2 million dollars in interest expense.
- Helped bring in ESI, ECS, IFA seedlings, Predatory Mites, TPL, Home Depot, Expansion to Freemont Millworks, and Sturdy Craft.

I have served on the Board of Directors with the Association of Oregon Counties for 13 years, the Transportation Steering Committee Chair for 5 years and as its President in 2004. I have also served on the Board of Directors of the O&C Timber Counties for 12 years, and its Executive Board Treasurer for 3 years. The experiences and contacts gained there are beneficial to Klamath County. We need to keep this experience working for you.

I ask for your Vote on Election Day.

(This information furnished by Committee to Reelect Al Switzer Klamath County Commissioner.)

The above information has not been verified for accuracy by the State of Oregon.

County Commissioner, Klamath County, Position 1



Kelley Minty Morris

Republican

Occupation: Manager, Youth Agency

Occupational Background: Business & Professional Management for Youth Agency, Media Professional for NBC affiliated Television Stations

(12 years)

Educational Background: Bachelor of Science; Communication and Business; Pacific Lutheran University. Graduated Summa Cum Laude.

Prior Governmental Experience: Joint Public Safety Advisory Committee Public Information Officer, Klamath County Anti-Terrorism Task Force Member

KELLEY MINTY MORRIS for Klamath County Commissioner
As our next county commissioner, Kelley Minty Morris will deliver three things:

1) Kelley Minty Morris will promote Klamath County's economic recovery.

- We need jobs. Jobs come from growing existing business, developing small businesses and creating new business opportunities.
- Klamath County needs to work **with** businesses to promote free enterprise.
- Our City and County Governments must work together with the business community to make Klamath County more competitive.
- Kelley Minty Morris has a plan to promote economic recovery without additional taxes.

2) Kelley Minty Morris will build professionalism in Klamath County operations.

- Enough embarrassing audits, officials forced to resign, and inappropriate behavior.
- Klamath County needs better professional management and accountability.
- Klamath County needs professional planning to deliver measurable budget outcomes and meet administrative standards.
- Kelley Minty Morris brings a stellar track record of successful professional management.

3) Kelley Minty Morris will open government to citizen involvement and inspection.

- Klamath County will have a government — **not** for government officials — but for the people.
- Current leadership plays politics with information.
- This is **your** government — it's **your** right to know.
- Citizen involvement is crucial to improving County government. Citizen's involvement will be welcomed.
- Kelley Minty Morris spent 12 years as a media professional listening to and working with all people.

Kelley Minty Morris will work for open government -

- Open for citizen participation, and
- Open for business.

Please go to www.kelleymintymorris.com to read Kelley's plan.

(This information furnished by Elect Kelley Minty Morris.)

The above information has not been verified for accuracy by the State of Oregon.

County Commissioner, Klamath County, Position 1



Tom Mallams

Republican

Occupation: Farmer/rancher

Occupational Background: Manager Tower Market Basket; Owner/operator Broken Box Ranch

Educational Background:

graduated Medford High School; Southern Oregon University

Prior Governmental Experience: United States Marine Corps; Testified before US Congressional Subcommittee Hearing; Vice Chair Klamath County Republican Party Central Committee; Klamath County Republican Precinct person; Klamath County Farm Use Advisory Board; Klamath County Soil and Water Conservation District Director; President Klamath Off-Project Water Users Association; President Sprague River Water Users Association; Chair Headwaters Local Advisory Committee Senate Bill 1010 Clean Water Act

Membership and Community Involvement:

- Mentoring at risk youth
- National Rifle Association
- Klamath Tea Party Patriots
- Citizens Protecting Rural Oregon
- Oregon Hay Growers
- Water for Life
- Coached Youth Wrestling Mat Club
- Oregon Farm Bureau
- Oregon Cattleman's Association

Fiscal Responsibility: Tom has a history of successful fiscal leadership managing Tower Market Basket and owning and operating the Broken Box Ranch. Tom has been able to adjust spending in times of declining revenue, while still realizing a profit margin in a challenging economic climate. Tom will strive for long term financial planning which will insure stable funding for public safety.

Use of our Natural Resources: Tom is actively promoting the ability to use our natural resources. He is working toward the full reauthorization of the Secure Rural Funds and the restored ability to use our Natural Resources securing local jobs.

Business Friendly Regulations: Tom will scale back and eliminate strict cumbersome County Regulations at every opportunity, creating a healthier Business Friendly County.

Accountability: Tom believes in accountability and adherence to the Constitution and our nation's founding principles.

Endorsements

Senator Doug Whitsett Representative Bill Garrard
 Congressman Tom McClintock Bill Kennedy
 Water for Life Mike Beeson
 Bill Brown Martin Kerns
 Reg LeQuieu Roger Nicholson
 Denny Teater Ken Coffman
 Scott Teeple Linda Long
 Lieutenant Colonel Jon Holdaway, ret Bill Nash
 View More at VOTE2012TOM.COM

(This information furnished by Mallams for Commissioner.)

The above information has not been verified for accuracy by the State of Oregon.

County Commissioner, Klamath County, Position 1



John Garee

Republican

Occupation: Owner of American Sanitation, Inc.

Occupational Background: Logger, Mill Worker, Farmer, Rancher

Educational Background:

G.E.D. Joined the U.S. Navy at 16 under "Minority Years".

Prior Governmental Experience: none

Klamath County has the reputation of being business unfriendly and as a business owner I know this first hand. I will work to make Klamath County the most business friendly county in the state doing away with unnecessary regulation and the oppressive permitting process. As County Commissioner I will make sure the public is treated with respect and I will work diligently to bring industry to Klamath County.

I am asking for your vote. It is time for someone who will work for the public that will remember who is paying for, not only their wages but for all service in Klamath County. I am that guy, I am you. Sincerely, John Garee

(This information furnished by John Garee.)

The above information has not been verified for accuracy by the State of Oregon.

County Commissioner, Klamath County, Position 3



James Bellet

Republican

Occupation: Retired General Contractor

Occupational Background: Commercial/Industrial and Home Building Contractor for 40 years

Educational Background: Ferguson Elementary School; Henley High School; Graduated from Oregon State University in 1971 with BS in Business and Minor in Engineering; Additional business related classes

Prior Governmental Experience: Charter Board Member of Klamath Community College; Republican Central Committee

Optional Information:

- Resident of Klamath County since 1948. I've been married to my wife Sherry for 44 years and we have 2 grown daughters, Sophia and Meredith and 3 grandchildren. I owned Bellet Construction, Inc. for 40 years and additionally owned other businesses. My family is still involved in the equipment rental business. I am a member of the following organizations:
- Member and Past President of Klamath County Rotary Club
- Past Charter President of Oregon Pilots Association, Klamath Falls Chapter
- Past State President of Oregon Pilots Association
- Member of the Experimental Aircraft Association
- Past President of Klamath Chapter of Associated General Contractors
- Past member of Klamath Homebuilders Association

Statement of Endorsement:

- Jim Bellet has the business knowledge, integrity and trustworthiness to lead Klamath County.

George M. and Kristi L. Redd

- Jim Bellet is exceptionally well qualified to lead the county through the next four years. His 40 plus years experience in running a very successful business and his superb set of personal values make him my choice for county commissioner.

Steven Harper

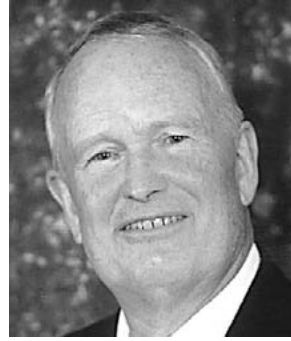
- I have known Jim Bellet for many years and have served with him on many civic committees, including Klamath Community College Board of Education. I have found Jim to be honest and forthcoming, possessing impeccable ethical character. I have no hesitation, support Jim in his endeavor.

Gerald Hamilton

(This information furnished by Committee to elect James Bellet, Klamath County Commissioner - position 3.)

The above information has not been verified for accuracy by the State of Oregon.

County Commissioner, Klamath County, Position 3



Dennis N Jefcoat

Republican

Occupation: Retired Police Detective, Retired business owner

Occupational Background: 25 Years in law enforcement, 10 years in private business

Educational Background: BS Degree UCLB, AA Degree Cerritos College

Prior Governmental Experience: Law enforcement; Past President Costa Mesa Police Officers Association; Past President Western States Auto Theft Investigators Association. Military Service: US Army Vietnam 58th Infantry Platoon Scout Dog. US Army Military police investigator.

Optional Information: Married 37 years to Donna Jefcoat, four children.

In this election the voters have a choice in deciding how your county government should function. The following is my contract with you the taxpayer. If you give me your vote, I will do the following for your benefit.

Manage county government for the betterment of all citizens. Avoid giving favors to special interest groups that hurt taxpayers. Open a part time Commissioners office in North County to allow citizens to have regular access to a County Commissioner. When the will of the people on a major issue is in doubt, I will propose submitting the question(s) to the voters during regular scheduled elections.

I will make law enforcement my number one budget priority followed by public works, community development then all other funding needs. I will advocate operating the county on 90% of anticipated revenue while building a long term financial plan. I will work to eliminate wasteful spending by privatizing appropriate government services or consolidating departments of government.

I will propose that there shall be one reserve fund in the budget for all county building and vehicle replacement rather than dozens of hidden budget accounts. There will be transparency in the fiscal affairs of the county. I will work to have the financial transactions of county government posted on the web.

My positions on Klamath County Issues are posted on line. See our web page at www.jefcoatforcommissioner.com for complete information.

(This information furnished by Dennis Jefcoat.)

The above information has not been verified for accuracy by the State of Oregon.

County Commissioner, Klamath County, Position 3

Cheryl Hukill

Republican

Occupation: Klamath County Commissioner 2009-present:

Occupational Background: 1979-2004 Co-owner of Hukill's Ready Rooter Inc., 1996-2001 Cornerstone Christian Fellowship 1971-1972, 1974-1975, and

1987-1990 Merle West Medical Center, 1986- Allergy/Asthma Clinic

Educational Background: Coquille High School in 1965, Cascade College 1965-1966, Canadian Bible College 1966-1967

Prior Governmental Experience: Klamath County Commissioner 2009-present, Appointed to Budget Task Force for Klamath County, Executive Board member of Klamath County Republican Central Committee, Helped develop a handbook for PCP's, which was adopted by the state, Chairman Klamath County Republican Central Committee Ways and Means, President Klamath County Republican Women for 3 years, Secretary Klamath County Republican Women for 2 years,

Personal

Husband Ron 43 years. Residents of Klamath County since 1969. We have 3 children and 6 grandchildren. Three generations in Klamath County.

Membership and Projects:

Military Affairs Committee, Kl. County Republican Women's Group, Citizens Action Teams in Gilchrist & Crescent Lake Junction, Natural Resource Advisory Com., Veterans Advisory Board, Senior Citizen Advisory Board, SOCEDD Board; AOC Human Services Board, Ambulance Advisory Board, Fire Defense Board, Discover Klamath Board, The Ore. Consortium Board, Association of Oregon Counties, AOC Public Safety Board, NACO Public Safety Board, Community Corrections Commission, City/County Airport Futures Committee, TEAM Klamath, Sanford Pediatric Clinic, Public Access Television, County Wide Portal, Oregon Veterans Home Bond, North County Infrastructure issues.

"MOVING INTO A BRIGHTER FUTURE"

We are looking forward to the Biomass Company that will provide around 130 family wage jobs, along with the Sanford Pediatric Clinic with 30-40 jobs. Public Safety continues to be one of my priorities as we have tirelessly worked toward solutions for permanent funding. It is vital that our citizens and new businesses coming to our county, feel safe with adequate protection and services. Being involved in numerous community activities and events has been a highlight of my first term. One of my campaign promises was to hold monthly town hall meetings every year throughout the county, and I have kept that promise.

(This information furnished by Committee to re-elect Commissioner Cheryl Hukill.)

The above information has not been verified for accuracy by the State of Oregon.

We invite you to become a Republican Party Precinct Committee Person (PCP)**What is a PCP?**

Precinct committeemen and committeewomen are the heart of the Republican Party in Oregon. As the grassroots representatives of the Republican Party in Oregon, they advocate for Republican political principles in their neighborhoods and community. They attend regular meetings of their county Republican Central Committee in order to help set the party agenda in the county and to strategize how to spread the Republican message at the local level.

What does a PCP do?

As a PCP, you have a voice in selecting Republican Party leadership on the county, state, and national levels. You may even seek a leadership position yourself. County leaders, in turn, help select the state party leaders who participate on the Republican National Committee and elect the national party leaders. PCPs also select Oregon delegates and alternates to attend the Republican National Convention, who cast the ballots for the Republican nominee for President and Vice President of the United States.

PCPs are often called on by Republican candidates to help with grassroots campaigning. You may be asked to “walk” your precinct to introduce a candidate to friends and neighbors. You may also be asked to make phone calls and distribute campaign materials in your precinct. You will become the face of the Republican Party in your community!

What is the Republican Philosophy?

- Republicans believe that the strength of our nation lies with the individual and that each person’s dignity, freedom, ability and responsibility must be honored.
- Republicans believe in equal rights, equal justice and equal opportunity for all, regardless of race, creed, sex, age or disability.
- Republicans believe that the free enterprise system has made America the land of opportunity, economic growth and prosperity.
- Republicans believe government must be fiscally responsible and allow individuals to keep more of the money they earn.
- Republicans believe the proper role of government is to provide for the people only those critical functions that cannot be performed by individuals or private organizations, and that the best government is that which governs least.
- Republicans believe the most effective, responsible and responsive government is government closest to the people.
- Republicans believe that Americans value and should preserve our national strength and pride while working to extend peace, freedom and human rights throughout the world.

This election, Oregon Republicans will work to elect Republicans in the Oregon House and Senate, United States Congress, and the White House. PCPs will play key roles in bringing about these victories.

If you agree with the beliefs expressed above, we invite you to become a PCP to make the Republican Party and our nation stronger.

If you would like more information about the Oregon Republican Party, please call our state party headquarters at (503) 595-8881. You may send e-mail to info@orgop.org or visit our website at www.oregonrepublicanparty.org.

Allen Alley
Chairman, Oregon Republican Party
PO Box 1586; Lake Oswego, OR 97035

(This information furnished by Oregon Republican Party.)

Judge of the Supreme Court, Position 2

Dave Brewer

Nonpartisan

Occupation: Chief Judge,
Oregon Court of Appeals

Occupational Background:
Oregon Court of Appeals
Judge; Lane County Circuit
Court Judge; Partner in private
law practice; Fire fighter

Educational Background: Sonoma State University, BA (1974);
University of Oregon School of Law, JD (1977)

Prior Governmental Experience: Chief Judge, Oregon Court
of Appeals; Lane County Circuit Court Judge; National
Center for State Courts, Board Member; Oregon Commission
on Judicial Fitness and Disability, member, chair; Oregon
Council on Court Procedures; Lane County Domestic Violence
Council; Oregon Law Commission, member

COMMUNITY SERVICE: Lane County Relief Nursery, Board
of Stewards; Oregon Campaign for Equal Justice, executive
committee member; University of Oregon Law School Dean's
Advisory Council, member

Fair. Respected.

Chief Judge Dave Brewer is a natural and inspiring leader. He
always seeks to influence rather than enforce his will. Rather
than compete, he collaborates. He is respected and fair.

Wallace P. Carson, Jr., Former Chief Justice,
Oregon Supreme Court

Common Sense. Compassion.

Dave Brewer is an extraordinary jurist. He works hard. He is
professional beyond measure. He has common sense and
compassion. Beyond that, he is a genuinely nice guy.

Mary Deits, Former Chief Judge, Oregon Court of Appeals

Committed to the Rule of Law.

Judge Brewer is among the finest judges with whom we have
worked. He is fair, hard-working, and has a deep commit-
ment to the rule of law. He cares about all of Oregon and has
experience in all levels of our state's judicial system. We urge
our fellow Oregonians to join us in electing him to the Oregon
Supreme Court.

Presiding Circuit Court Judges Daniel J. Ahern (Crook,
Jefferson), Lindi Baker (Josephine), Richard Barron (Coos,
Curry), Mary Ann Bearden (Lane), Alta Brady (Deschutes),
John Collins (Yamhill), William Cramer (Grant, Harney),
Charles Littlehales (Lincoln), Patricia Sullivan (Malheur),
Kirsten Thompson (Washington), Nan Waller (Multnomah),
Cameron Wogan (Klamath)

www.judgedavebrewer.com

*(This information furnished by Judge Dave Brewer for Oregon
Supreme Court.)*

**The above information has not been verified for accuracy by
the State of Oregon.**



Ballots must be received by 8 pm on May 15

County Elections Offices are
open on election day from
7 am to 8 pm



A postmark does not
make a ballot "received."

To guarantee that your
ballot is received by the
deadline, return it to an
official dropsite.

for more information about
voting in Oregon

➔ **oregonvotes.org**



1 866 673 VOTE / 1 866 673 8683

se habla español

TTY 1 800 735 2900

for the hearing impaired

Judge of the Supreme Court, Position 3

Timothy J Sercombe

Nonpartisan

Occupation: Judge, Oregon Court of Appeals

Occupational Background: Judge, Oregon Court of Appeals since 2007; Attorney, 30 years; Oregon Supreme Court Clerk

Educational Background: University of Oregon School of Law J.D. Honors Graduate; Northwestern University, B.A.

Prior Governmental Experience: Judge, City Attorney

The Best Choice for Oregon Supreme Court

Dear Voter,

I am running for the Oregon Supreme Court to **protect the public interest, promote justice and fairness** for Oregon citizens, and **ensure that our government is accountable** to the people. I approach each case with an inquisitive and open mind and without bias and prejudgement. I have worked in courtrooms, city council chambers, and hearing rooms throughout the entire state. I know Oregon and its laws.

Your vote is important, and if you cast it for me, I will work hard to earn and maintain your confidence and trust.

Tim Sercombe

Judge Sercombe has the Right Experience

"As an Oregon Supreme Court Justice, Judge Tim Sercombe will **protect the public interest** and **keep governments and businesses accountable**. He has served on the Oregon Court of Appeals; he has the right kind of experience to bring a **fair, unbiased, and open-minded** approach to the bench."

-Governor Ted Kulongoski, former Oregon Supreme Court Justice, former Attorney General

Judge Sercombe Understands Oregon's Unique Laws

"Judge Sercombe is the only candidate who is **already an appellate judge**. He had an exceptional career as a lawyer, working to solve problems in every part of the state. He particularly understands laws that are unique to Oregon, including our state constitution and land use laws."

- Dave Frohnmayer, former Attorney General, President Emeritus, University of Oregon

Judge Sercombe Will Protect the Public Interest

"Judge Tim Sercombe is known for his **intelligence, integrity, and fairness**. He will represent our interests in **safe communities**, where those who break the law are held accountable."

-Bill Riggs, Supreme Court Justice (Retired)

Judges, lawyers, and elected leaders support Judge Sercombe
www.JudgeTimSercombe.com

(This information furnished by Judge Timothy Sercombe for Oregon Supreme Court Committee.)

The above information has not been verified for accuracy by the State of Oregon.

Judge of the Supreme Court, Position 3

Nena Cook

Nonpartisan

Occupation: Judge Pro Tem; Attorney

Occupational Background: Judge Pro Tem, Multnomah County (2007-present); Attorney in private practice (1991-present); Marion County District Attorney's office (1990-1991)

Educational Background: Willamette University College of Law, JD; Gonzaga University, BA; PSU, Business Administration Graduate Program

Prior Governmental Experience: Oregon Commission on Professionalism (2005); Oregon Commission for Women (2007-2010)

OTHER EXPERIENCE: Oregon State Bar President (2005)

NENA COOK FOR OREGON SUPREME COURT

EXPERIENCED

Nena Cook has more than twenty years of experience representing individuals and businesses. She has demonstrated a strong commitment to public service and a deep knowledge of the law. She is the best choice for the Oregon Supreme Court.

Vic Atiyeh, Governor, 1979-1987

Bill Bradbury, Secretary of State, 1999-2009

Norma Paulus, Secretary of State, 1977-1985

DEDICATED

Having practiced law for over 35 years, I've met scores of attorneys and tried cases before a lot of judges in state and federal court. **Judge Cook stands out as one of the best.** She is diligent and dedicated. I cannot think of anyone better for our state's highest court.

Rudy Lachenmeier, Oregon attorney

Real-world experience, intelligence and unparalleled work ethic make Nena Cook uniquely qualified for Oregon's Supreme Court.

Doug Robertson, Douglas County Commissioner
Dick Schouten, Washington County Commissioner
Serena Cruz Walsh, former Multnomah County Commissioner

TRUSTED

Nena Cook's commitment to a fair and just legal system is what Oregon needs in a Supreme Court Justice. She has our trust and respect as prosecutors and our vote as Oregonians.

Steve Atchison, Columbia County District Attorney
Edwin Caleb, Klamath County District Attorney
Jason Carlile, Linn County District Attorney
John Foote, Clackamas County District Attorney
Alex Gardner, Lane County District Attorney
Josh Marquis, Clatsop County District Attorney
Eric Nisley, Wasco County District Attorney
William Porter, Tillamook County District Attorney

For a complete list of endorsers and more information:
www.NenaCookforOregonSupremeCourt.org.

(This information furnished by Nena Cook for Oregon Supreme Court Committee.)

The above information has not been verified for accuracy by the State of Oregon.

Judge of the Supreme Court, Position 3



**Richard C
Baldwin**

Nonpartisan

Occupation: Judge, Multnomah County Circuit Court (2001-present) Criminal and Civil Trials, Family Law, Drug Treatment and Mental Health Courts

Occupational Background: Director, Oregon Law Center (1996-2000), Litigation Director, Multnomah County Legal Aid (1991-1995), Trial Attorney (1981-1990)

Educational Background: JD, Lewis & Clark Law School

Prior Governmental Experience: Vice President, Oregon State Bar Board of Governors (2000)

Vote for Judge Dick Baldwin: Because integrity and experience matter.

Integrity

"Judge Baldwin has worked tirelessly throughout his career to ensure equal access to justice and fair treatment under the law. He is the only candidate that will serve the best interests of all Oregonians." **Governor Barbara Roberts**

Experience

"Judge Baldwin has presided over hundreds of criminal and civil cases, including high profile murder trials, over the past ten years." **The Oregonian, Nov 14, 2011**

"Judge Baldwin's 25 years trial experience as a judge and attorney will strengthen Oregon's highest court." **Former District Attorney and Retired Judge Harl Haas**

Law Enforcement for Baldwin

"Judge Baldwin has a profound depth of knowledge gained from years of trying thousands of cases. He understands law enforcement and has been fair, firm and consistent throughout his distinguished career." **Daniel Staton, Multnomah County Sheriff**

Craig Roberts, Clackamas County Sheriff and Pat Garrett, Washington County Sheriff

Working Families for Baldwin

"Judge Baldwin has proven to be fair and open to all, providing a level playing field for individuals to seek justice against powerful interests. We are proud to support such a strong advocate for real people." **Kevin Jensen, Ironworkers Local 29. Also endorsed by IBEW #48**

Award Winning

Judge Baldwin has been honored for his "outstanding contribution to promoting women and minorities in the legal profession." **Oregon Women Lawyers, Judge Deiz Award**

Vote for Judge Dick Baldwin

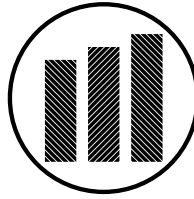
Oregon Education Association

Senior Judges Marshall Amiton, Frank Bearden, Douglas Beckman, Ronald Cinniger; Judges Paula Bechtold, Henry Kantor, Paula Kurshner, Angel Lopez, Judith Matarazzo, Adrienne Nelson, Kathryn Villa-Smith, Merri Souther Wyatt, Ken Walker.

www.electjudgebaldwin.com

(This information furnished by Elect Judge Baldwin.)

The above information has not been verified for accuracy by the State of Oregon.



**View unofficial
election results**

starting at 8 pm on May 15

vote!

www.oregonvotes.org

for more information about
voting in Oregon

oregonvotes.org



1 866 673 VOTE / 1 866 673 8683

se habla español

TTY 1 800 735 2900

for the hearing impaired

Judge of the Court of Appeals, Position 6

Tim Volpert

Nonpartisan

Occupation: Trial and Appellate Attorney

Occupational Background: Attorney and partner at Davis Wright Tremaine, Portland, Oregon

Educational Background: Willamette University College of Law, J.D. 1981; Earlham College, B.A. 1978

Prior Governmental Experience: Judicial Clerk for Hon. W. Michael Gillette, Oregon Court of Appeals, 1981-82

Personal: Wife, Joan; children, Joe and Emily

TIM VOLPERT IS EXPERIENCED.

- Has hands-on experience in virtually all areas of law that the Oregon Court of Appeals considers.
- Devoted 30 years to representing Oregon citizens, public bodies and corporations in Oregon trial and appellate courts.
- Handled over 100 appeals in state and federal courts, with over 60 appeals before the Oregon Court of Appeals.
- Successfully represented an Oregon public school district in a landmark case before the United States Supreme Court.

TIM VOLPERT IS RECOGNIZED BY HIS PEERS.

- One of the "Best Lawyers in America" in appellate law (Woodward/White, 2010-12).
- One of "America's Leading Lawyers for Business" (Chambers USA, 2009-11).
- Received the Oregon State Bar President's Award for Public Service, 2004.

TIM VOLPERT IS DEDICATED TO COMMUNITY SERVICE.

- Devoted thousands of volunteer hours to law-related education and community service.
- Coached Portland's Grant High School Constitution Team to seven top 10 finishes in the national competition.
- Served in leadership roles in Oregon non-profit corporations including Classroom Law Project, Ecumenical Ministries of Oregon and Shared Housing.
- Served in leadership roles in professional organizations including Multnomah Bar Association Foundation, Oregon Rules of Appellate Procedure Committee and Oregon State Bar Appellate Section Executive Committee.
- Represented Oregon clients in over 75 matters pro bono.

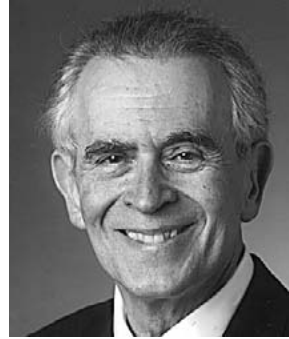
HIS INTEGRITY, LEGAL ABILITY AND COMMUNITY ENGAGEMENT ARE WHY TIM VOLPERT HAS EARNED BROAD SUPPORT FROM RESPECTED LEADERS AND ORGANIZATIONS ACROSS OREGON (Alphabetically)

- Congressman Earl Blumenauer
- Congresswoman Suzanne Bonamici
- Former State Senator, Neil Bryant
- Rev. John Dennis
- State Representative Lew Frederick
- Former Oregon Supreme Court Justice, W. Michael Gillette
- Former Attorney General, Hardy Myers
- Oregon Education Association
- George J. Puentes
- Governor Barbara Roberts
- Michael D. Schrunk, District Attorney
- Jim Zupancic

www.timvolpert.com

(This information furnished by Tim Volpert for Court of Appeals.)

The above information has not been verified for accuracy by the State of Oregon.

Judge of the Court of Appeals, Position 6

Allan J Arlow

Nonpartisan

Occupation: Administrative Law Judge, Oregon Public Utility Commission and Oregon Board of Maritime Pilots

Occupational Background: Private law practice before state and federal courts and

agencies; President and CEO, Computer & Communications Industry Association; legal counsel and executive management positions at three major companies.

Educational Background: Georgetown University Law School, JD; University of Michigan, BA, Hopwood Prize.

Prior Governmental Experience: Hearing Officer, Bonneville Power Administration and Multnomah County

"I have been honored to serve the people of Oregon and have seen firsthand how laws, regulations and judicial decisions affect the public. I believe I can bring a new and valuable perspective to the Court of Appeals and I will continue to work hard to protect the rights of our citizens."--Judge Allan Arlow

A Fair and Impartial Judge

- Allan Arlow has been a judge in Oregon for over 12 years, presiding in some of the state's most complex cases and writing over a thousand orders and rulings.
- Judge Arlow's decisions are based on the *facts* and the *law--nothing else*.
- The Oregon State Bar Appellate Selection Committee examined Judge Arlow for integrity, ability, experience and judicial temperament and recommended him to the governor as qualified to serve on the Court of Appeals. (*agenda 12-28-09*)

"...his integrity and impartiality are beyond reproach...we believe we are fortunate to have Mr. Arlow..."

--Bonneville Power Administration (WP-07 Supplemental Power Rate Case 1-7-08)

An Outstanding Attorney

- Before becoming a judge, Allan practiced law for over twenty years.
- He's appeared before many courts and agencies and has given expert testimony before U.S. Senate and House Committees and Cabinet Departments.
- Allan has counseled individuals, companies and non-profit groups on a full range of legal matters and also helped the US Justice Department bring down a major organized crime figure.

Arlow has intellectual heft. He would bring a fresh perspective to the court, along with valuable expertise in corporate, securities and regulatory law. --Eugene Register-Guard (4-27-10)

www.judgearlow.com

(This information furnished by Judge Arlow for Oregon.)

The above information has not been verified for accuracy by the State of Oregon.

Judge of the Court of Appeals, Position 6

James C Egan

Nonpartisan

Occupation: Judge, Linn County Circuit Court.

Occupational Background: Judge, Circuit Court of Linn County (2010-present); U.S. Army Reserve (2008-present); Partner, Kryger, Alexander,

Egan, Elmer & Carlson (1985-2010); Deputy Command Judge Advocate, A.S.G. Kuwait (2008-2009); U.S.M.C.-Reserve (1983-1995); U.S.M.C. (1979-82).

Educational Background: University of Oregon School of Law, J.D. (1985); Willamette University, B.S. (1979); West Albany High School, Diploma (1974).

Prior Governmental Experience: Oregon State Bar (1985); Linn County Planning Commission (1986-94); U.S. District Court Bar, District of Oregon (1996); Tangent Fire Board (1996-2008); Ninth Circuit Court of Appeals Bar (2000).

**JAMES EGAN FOR OREGON COURT OF APPEALS
EXPERIENCE. DEDICATION. INTEGRITY.**

EXPERIENCE

Judge Egan is a leader and an educator. Before taking the bench in 2010, Judge Egan worked for 25 years as a trial attorney where he handled a wide variety of cases at both the trial and appellate level. Judge Egan has served as President of the Oregon Trial Lawyers (2005-2006); was elected to the House of Delegates of the Oregon State Bar Association (2001-2005); served on his local Fire Board and Planning Commission; and, when he was deployed in the Middle East, taught business law to the troops as an adjunct professor for the University of Maryland in Arifjan.

DEDICATION

Judge Egan has had the distinct honor of serving his community for more than 30 years as a soldier, as a lawyer, and as a judge. As a trial attorney, Judge Egan represented everyday men and women in worker's compensation and discrimination cases. He is deeply committed to ensuring that the courts are accessible to all Oregonians and to upholding the rule of law in an impartial and fair manner.

INTEGRITY

Judge Egan approaches each case with an open mind. He carefully considers the issues that come before him and decides on their merits. He is dedicated to fulfilling his responsibilities as a judge in a manner worthy of your trust and respect.

(This information furnished by Committee to Elect Judge James C Egan.)

The above information has not been verified for accuracy by the State of Oregon.

Judge of the Court of Appeals, Position 8

Lynn R Nakamoto

Nonpartisan

Occupation: Judge, Oregon Court of Appeals

Occupational Background: Judge, Oregon Court of Appeals (January 2011 to present); associate, shareholder, and managing shareholder in

Portland business litigation firm Markowitz, Herbold, Glade & Mehlhaf, P.C. (1989 until joining the court); summer law clerk to the Honorable Helen J. Frye, United States District Court for the District of Oregon (1989); staff attorney and acting executive director at Marion-Polk Legal Aid Service, representing low-income clients in civil matters (1987 to 1989); and staff attorney at Bronx Legal Services in New York, also representing low-income clients in civil cases (1985 to 1987).

Educational Background: J.D. from New York University School of Law (1985); A.B. in philosophy from Wellesley College, with honors (1982).

Prior Governmental Experience: Judge, Oregon Court of Appeals (January 2011 to present); Oregon Board of Bar Examiners (member 1998-2000, vice chair 2000-01); Oregon State Bar Affirmative Action Committee (member 1992-95 & 2004-2006, chair 2006).

Professional Activities and Community Service: Judge Nakamoto has been an active member of local and specialty bar associations throughout her career as a lawyer in Oregon. She also served on the boards of directors of a number of nonprofit organizations in the Portland area while she was in private practice. She has been recognized by bar associations for her service and recently was recognized for professionalism by the Litigation Section of the Oregon State Bar.

Judge Nakamoto will bring 27 years of professional experience to her work in public service on the Court of Appeals.

(This information furnished by Committee to Elect Judge Lynn R Nakamoto.)

The above information has not been verified for accuracy by the State of Oregon.

Judge of the Court of Appeals, Position 9



Erika Hadlock

Nonpartisan

Occupation: Judge, Oregon Court of Appeals

Occupational Background: Deputy Solicitor General, Oregon Department of Justice; Assistant Attorney General, Oregon Department of Justice;

Law Clerk, US District Court; Administrative Law Judge, Oregon Bureau of Labor and Industries; Associate Attorney, Bogle & Gates; Chemist

Educational Background: Cornell Law School, JD, magna cum laude (1991); Reed College, BA (1985)

Prior Governmental Experience: Oregon Court of Appeals Judge; positions listed above with Oregon Department of Justice, US District Court, and Oregon Bureau of Labor and Industries

Respected

Judge Hadlock has earned positions of respect in the legal field, from managing editor of the Cornell Law Review, to Deputy Solicitor General at the Oregon Department of Justice (DOJ), to Judge of the Oregon Court of Appeals.

Experienced

Judge Hadlock practiced law for nearly twenty years before she joined the Court of Appeals, starting at Bogle & Gates, where she represented clients in commercial and environmental litigation. After joining Oregon DOJ, Judge Hadlock represented the State of Oregon in hundreds of cases before trial courts, the Oregon Court of Appeals, the Ninth Circuit Court of Appeals, and the Oregon Supreme Court. Judge Hadlock also spent two years as an Administrative Law Judge at the Bureau of Labor and Industries.

Dedicated Public Servant

Since joining Oregon DOJ in 1995, Judge Hadlock has dedicated herself to public service, through her work at DOJ (where she earned four Outstanding Service Awards), at the Bureau of Labor and Industries, as a clerk for a federal judge, and now as a judge on the Oregon Court of Appeals. Judge Hadlock is known for her integrity, hard work, fairness, common sense, and dedication to the rule of law.

"I am honored by the privilege of working for all Oregonians as a judge on the Oregon Court of Appeals. I am deeply committed to applying the law thoughtfully and impartially in all cases that come before the court."

-- Judge Erika Hadlock

(This information furnished by Committee to Elect Judge Erika Hadlock.)

The above information has not been verified for accuracy by the State of Oregon.

County Treasurer, Klamath County



Jason Link

Nonpartisan

Occupation: CERTIFIED PUBLIC ACCOUNTANT; TREASURER, KLAMATH COUNTY, OREGON; CHIEF FINANCIAL OFFICER, KLAMATH COUNTY, OREGON; SECRETARY/TREASURER, KLAMATH COMMUNITY

COLLEGE FOUNDATION

Occupational Background: TAX COLLECTOR, KLAMATH COUNTY, OREGON; SENIOR AUDIT MANAGER, MOLATORE, SCROGGIN, PETERSON & CO LLP; BOARD MEMBER, KLAMATH COMMUNITY COLLEGE

Educational Background: UNIVERSITY OF OREGON, BACHELOR OF SCIENCE, ACCOUNTING; UMPQUA COMMUNITY COLLEGE, ASSOCIATE OF ARTS, BUSINESS ADMINISTRATION

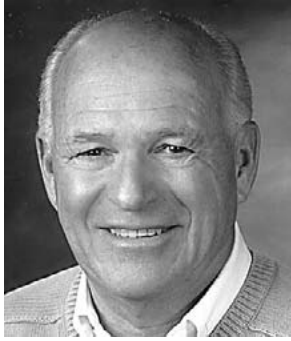
Prior Governmental Experience: TREASURER, KLAMATH COUNTY, OREGON; CHIEF FINANCIAL OFFICER, KLAMATH COUNTY, OREGON; TAX COLLECTOR, KLAMATH COUNTY, OREGON; BOARD MEMBER, KLAMATH COMMUNITY COLLEGE

I BELIEVE GOVERNMENT SHOULD BE RESPONSIVE TO THE NEEDS OF ITS STAKEHOLDERS BY PROVIDING SERVICES IN A TIMELY AND COST EFFICIENT MANNER. I WILL EARN YOUR TRUST EACH DAY BY PROVIDING AN OPEN AND INFORMATIVE COUNTY GOVERNMENT. I AM A LICENSED CERTIFIED PUBLIC ACCOUNTANT. I HAVE BEEN INVOLVED WITH MANY ORGANIZATIONS FROM FOR-PROFIT, NOT-FOR PROFIT AND GOVERNMENTS. THESE ORGANIZATIONS INCLUDE SMALL COMMUNITIES, LARGE MULTI-NATIONAL COMPANIES, INSURANCE COMPANIES, INSURANCE COMPANIES, NATURAL RESOURCE COMPANIES, FOUNDATIONS, CITIES, SCHOOL DISTRICTS, IRRIGATION DISTRICTS, AND TEMPORARY EMPLOYMENT AGENCIES.

(This information furnished by ELECT JASON LINK PAC.)

The above information has not been verified for accuracy by the State of Oregon.

County Sheriff, Klamath County



Frank Skrah

Nonpartisan

Occupation: Detective Supervisor, Los Angeles Police Department (Retired)

Occupational Background: 25 years Detective Supervisor Los Angeles Police Department; 9 years California Superior

Court Investigator; Inquire Investigative Services, Private Investigative Firm

Educational Background: Graduate Los Angeles Police Academy; Graduate Numerous Department of Justice schools and seminar; Graduate U.S. Navy Medical-Dental Prosthetic School; Graduate South Pasadena High School, California

Prior Governmental Experience: Contract Investigator for Chief Administrative Officer Lassen County, California

In selecting the most qualified and experienced law enforcement professional to be the Sheriff of Klamath County, take the above information into consideration. A total of 34 years of supervisory and management experience is more than twice that of others who are seeking this position. It is well documented that experience counts and experience matters.

My years of experience, executive law enforcement personnel management, supervision and training with one of the most respected and professional departments in the nation, is what is now needed in Klamath County. During my law enforcement career I have been a Field Training Officer, Field Supervisor, Detective Supervisor, Section O.I.C. (Officer-in-Charge) and Division Watch Commander. As the next sheriff, I will bring years of experience and expertise in those areas as well as years of administrative experience and cost effective budget management.

Please go to my web page www.frankskrah.com and view me as a person, law enforcement professional and a member of the community. Then make an informed decision. I am seeking this office because this is my home and we need and deserve professional and cost effective law enforcement for our community, our families and especially our children.

(This information furnished by Frank Skrah.)

The above information has not been verified for accuracy by the State of Oregon.

County Sheriff, Klamath County



Charles (Chuck) Collins

Nonpartisan

Occupation: Sergeant, Klamath County Sheriff's Office.

Occupational Background: September, 1984: Hired by

the Klamath County Sheriff's Office as a Reserve Deputy; January, 1986: Hired full time as a Deputy with the Klamath County Sheriff's Department; October 1, 2001: Promoted to Corporal; July 1, 2006: Promoted to Sergeant

Educational Background: 1982-1984: Linn Benton Community College, Major Law Enforcement/Corrections; November 1989: Department of Public Safety Standards and Training, Basic Corrections Class; November 2002: Department of Public Safety Standards and Training, Supervision Course; September 2006: Applied Leadership Skills; May 2007: Oregon State Sheriff's Association Command College; September 2010: Leadership Conference; January 2011: Supervision/Management Training

Prior Governmental Experience: None

I am a proud, lifelong resident of Klamath County, and a 27 year veteran of the Klamath County Sheriff's Office. I will work towards rebuilding the Sheriff's Office and protecting the citizens of Klamath County. In 2010, we saw the devastation that occurred when 2/3rds of the jail was shut down. Property crimes increased significantly, and those responsible were not held accountable. My primary focus will be to keep the jail open to hold those that offend against us accountable. I will also work to return 24 hour patrols to the streets of Klamath County. With restructuring of this office, I feel that both are possible once I take office.

Below is a small sampling of my training. With my knowledge of the inner workings of the Klamath County Sheriff's office, training in supervision, management and leadership skills, I can once again make this office functional, and ready to protect and serve as we are sworn to do.

- July 1994: US Marshall's Court Security Training
- May 2000: Legislature New Law Training
- March 2001: Suicide Prevention in Jails
- April 2001: Gang Recognition Training
- June 2005: National Extradition Seminar
- September 2005: Northwest Warrants and Transport Seminar
- August 2006: Meth Physiological Effects
- August 2007: National Response Disaster Plan
- March 2010: Ethics Training
- April 2010: Legal Issues in Jails and Prison Training

(This information furnished by Charles (Chuck) Collins.)

The above information has not been verified for accuracy by the State of Oregon.

County Sheriff, Klamath County



Brian P Bicknell

Nonpartisan

Occupation: Marshal, Merrill Police Department

Occupational Background: 19 years as an Oregon Law Enforcement Officer. 5 years as City Marshal of The Merrill Police Department; Department Head responsible for budget creation and maintenance,

personnel, policies, investigations, traffic, patrol and public relations. 14 years with the Klamath County Sheriff's Office; Volunteer Reserve Deputy, School Resource Officer, Traffic Safety Deputy, Jail Deputy, Patrol Deputy and Marine Deputy

Educational Background: San Lorenzo Valley High School. Oregon Corrections Academy awarded for Leadership, Top Shooter and The Victor G. Atiyeh Award "Most Outstanding Student". Oregon Police Academy awarded for Top Shooter. Oregon Marine Academy. Oregon State Police Traffic Collision Technician Course. Oregon Supervision Course. Oregon Sergeant's Academy.

Prior Governmental Experience: Listed in Occupational Background above.

BRIAN BICKNELL is married to his high school sweetheart, Diana and has 12 grandchildren living in Klamath County.

BRIAN BICKNELL has been an active leader in local charities and public service organizations. **BRIAN BICKNELL** dedicates his personal and professional life to making Klamath County a better place to live, work, visit and grow.

BRIAN BICKNELL is currently the City Marshal of the Merrill Police Department and certified as an Oregon Police Officer requiring NO additional training to become your new SHERIFF. As the Marshal, he took a dismantled police department and turned it in to a thriving and well respected public safety agency with less money.

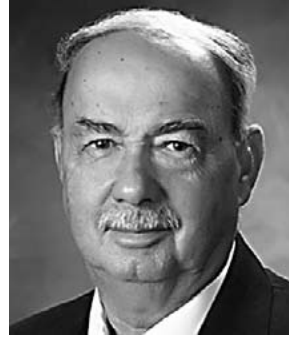
BRIAN BICKNELL brought professionalism and leadership to The Merrill Police Department. He works closely with other law enforcement departments and government agencies to bring the most service to you for the least amount of money. Recently **BRIAN BICKNELL** authored Oregon House Bill 2274, effectively adding hundreds of law enforcement officers to Oregon at no cost to taxpayers.

BRIAN BICKNELL: Currently qualified to be **SHERIFF**, listens and responds to your needs, brings the most service with the money you've entrusted to government and is a **PROVEN LEADER**. Vote **BRIAN BICKNELL** as your **SHERIFF**.

(This information furnished by Brian P Bicknell.)

The above information has not been verified for accuracy by the State of Oregon.

County Sheriff, Klamath County



Ron Broussard

Nonpartisan

Occupation: July 1995 to PRESENT. Marshal/Chief of Police for the City of Malin

Occupational Background: Began law enforcement career in 1968 with the Baldwin Park Police Department, promoted

to Sergeant in charge of Reserve Officers, transferred to the Los Angeles County Sheriff Office in 1980 and Retired in May 1995 as Captain in charge of the Police Reserves and the Mounted Posse. In 1998, Academy Instructor for Police Reserves at Klamath Community College, Oregon.

Educational Background: Oregon Department of Public Safety Standards and Training (DPSST), 1996. Certification in Criminal Justice. Rio Hondo Community College, 1969. Certification in Criminal Law and Arrest Procedures. Baldwin Park High School, 1965. Diploma.

Prior Governmental Experience: None

The reason why I became a Klamath County Sheriff candidate is because I am not satisfied to accept things the way they are today with Public Safety in Klamath County.

I will coordinate with local, state, federal law enforcement agencies, county personnel and citizens of the county in providing the best service that is the most cost effective. I will continue to keep the jail open and manage the budget the commissioners provide to the office by utilizing my demonstrated experience in management and finance for over 30 years, including a private business.

I will rebuild the department from the ground up, by motivating and supporting sheriff personnel. I will grow the reserve program to support full-time patrol deputies by implementing a part-time retired officer's plan. I will consolidate Animal Control services into the Sheriff's Office to save costs and prioritize all services for measured effectiveness.

With 44 years of law enforcement experience, of which 17 years as Malin Chief of Police in Klamath County with no lawsuit liabilities, **I am the Sheriff for you!**

"Do the Right Thing for the Right Reason" ~ Ron Broussard

(This information furnished by RON BROUSSARD for KLAMATH COUNTY SHERIFF.)

The above information has not been verified for accuracy by the State of Oregon.

County Sheriff, Klamath County



Brian Bryson

Nonpartisan

Occupation: Klamath County Sheriff's Office – Patrol Deputy

Occupational Background: February 1996–Reserve Deputy KCSO; November 1996–Jail Deputy; November 1997–Jail Field Training Officer; March

2003–Corporal, supervising Deputies & Inmate Work Crews; October 2002 to 2007–Reserve Officer for KFPD (while working in the jail); January 2008 to Present–Patrol Deputy including: County Patrol, Marine & Forest Patrol, Property Crime Investigations, Wildland Fire Investigator and Search & Rescue Manager; Field Training Officer; Honored to be 2010 Exchange Club KCSO Officer of the Year; Over 1900 hours of DPSST training to date

Educational Background: DPSST Police Academy; DPSST Corrections Academy; Mazama High School

Prior Governmental Experience: See Occupational Background

Like you, I've felt the budget crisis in Klamath County – not only as a citizen, but as a Sheriff's Deputy sworn to protect and serve. As a resident for over 40 years and a Deputy for 16, I have the work ethic, commitment and experience needed to lead the KCSO efficiently and effectively.

In the last 16 years with the KCSO, I've learned what works and what doesn't. Sheriff Evinger began, promoted and upheld upstanding programs such as Search & Rescue and the Mature Volunteer Program. While it is unfortunate that the County budget issues have affected not only the department, but the County as a whole so extensively, we haven't given up! What the KCSO provides for Klamath County is essential and positive.

As Sheriff my immediate plans include:

- Working with the Klamath County Commissioners to fund at a minimum of 2 pods in the Klamath County Jail; however, I prefer to operate all 3
- Realign patrol assets to target high-crime locations
- Work at re-establishing the Klamath InterAgency Narcotics Team
- Establishing a KCSO Citizen Advisory Committee to evaluate and prioritize KCSO expenditures

This election decision is important to each of us. I'd appreciate your support and ask for your vote.

(This information furnished by Committee to Elect Brian Bryson for Sheriff.)

The above information has not been verified for accuracy by the State of Oregon.

County Sheriff, Klamath County



Michael P Angeli

Nonpartisan

Occupation: Small Business Owner; Riverside County Senior Deputy Sheriff, Retired.

Occupational Background: 14 years law enforcement, 26 years business owner in outdoor retail at The Ledge.

Adjunct college instructor.

Educational Background: Advanced, Intermediate and Basic Oregon DPSST and California POST certificates. San Bernardino Valley College, Riverside Community College, Crafton Hills College studies in administration of justice, business administration; Klamath Community College, grant writing.

Prior Governmental Experience: None.

LAW ENFORCEMENT EXPERIENCE: 13 years as a decorated Senior Deputy, Riverside County Sheriff's Office, California. 3 years in corrections, 6 years as Senior Patrol Deputy, 4 years on Community Action Team, Riverside, an investigative unit. Klamath County Sheriff's Office, mid county resident deputy. My diverse background in law enforcement and familiarity with the region makes me well suited to be Sheriff.

PERSONAL: I moved to Klamath County with Diana, my wife of 25 years and 2 children for a better quality of life.

I am active in our community with numerous local and international service organizations as both officer and board member. Communications are essential with citizens and local groups to solve issues more effectively. Managing payroll and budgets in business and for many groups has strengthened my leadership. My development of the local graffiti abatement program has helped in identifying potential criminal activity. I have a working relationship with all peer agencies. An understanding of both law enforcement and business is needed for the sheriff's office.

ENDORSEMENTS:

- Valeree Lane, Writer
- Susan J. Beach, Beach's Jewelers
- Dan R. Beach, Beach's Jewelers
- Bill Schmeck
- Janice Briggs, Administrator, retired.
- Vince Briggs, Rancher
- Dan Rogers, Campus Public Safety
- Frank X. Hernandez, Financial Officer, retired
- Jill C. Russel, Real Estate
- Whitney N. Story, Winema Electric
- Gordon R. Ross, Illustrator
- Cindy M. Schmeck, Woodland Lighting
- Iris Melody Jones, Nurse, retired
- Matthew Fenton

PERSONAL MESSAGE:

I will bring frugal management, sound leadership and clear communications to the Sheriff's Office.

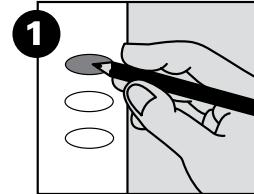
(This information furnished by Michael P Angeli.)

The above information has not been verified for accuracy by the State of Oregon.

Complete your ballot

Carefully read and follow all instructions printed on your ballot.

1 To vote, completely fill in the oval next to your choice.

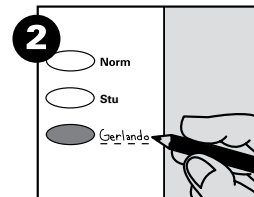


2 To write-in a candidate:

→ Clearly print his or her name on the dotted line provided on the ballot

-and-

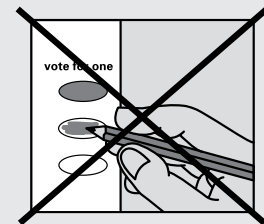
→ Fill in the oval next to the name you wrote-in



Check for errors

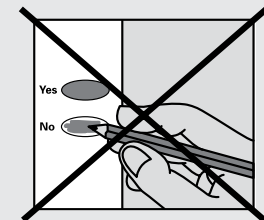
You do not have to vote on all contests. Those you do vote on will still count.

If you vote for more than one option, your vote **will not count** for that candidate or measure.



! Check your ballot carefully

You can not change your vote after you have returned your ballot



Contact your County Elections Office or call **1 866 673 VOTE** to request a replacement ballot if:

→ you make a mistake

→ you lose your ballot

→ your ballot is damaged or spoiled

→ or for any other reason.

Vote by Mail Frequently Asked Questions

As a voter, what do I have to do?

Your ballot packet will automatically be mailed to you between April 27 and May 1, 2012. Inside the packet you will find the ballot, a secrecy envelope and a return envelope. Once you vote the ballot, place it in the secrecy envelope and seal it in the pre-addressed return envelope. Be sure you sign the return envelope on the appropriate line. After that just return the ballot either by mail or at a designated dropsite.

What if I am uncomfortable voting my ballot at home?

There are privacy booths available for you to cast your ballot at your county elections office and there may be others at dropsite locations elsewhere in your county. For further information, call your county elections official.

What if my ballot doesn't come?

If you are registered to vote and have not received your ballot by May 4th, call your county elections office. They will check that your voter registration is current. If it is, they will mail you a replacement ballot. You can also check the status of your ballot at My Vote at oregonvotes.org.

What if I have moved and have not updated my registration?

If you were registered to vote by April 24 but now have a different address, call your county elections office for instructions on how to update your registration and receive a ballot.

Do I have to return my ballot by mail?

You have the choice of mailing your ballot or returning it to any county elections office or any designated dropsite in the state. You can find your nearest dropsite along with a map of how to get there by going to www.oregonvotes.org or you may contact your county elections office.

How much postage is required to mail the ballot back?

Your voted ballot can usually be returned using a single 45¢ first-class stamp. In those instances where additional postage is necessary, it will be clearly indicated on the ballot materials.

When must the voted ballot be returned?

The voted ballot must be received in any county elections office or designated dropsite by 8pm on election night. Postmarks do not count!

How do I know if my ballot is received?

You can track the status of your ballot by going online to: My Vote at www.oregonvotes.org or you can call your county elections office and ask if they received your ballot. A record is kept showing each voter whose ballot has been returned.

Can anyone find out how I've voted once I mail my ballot?

No. All ballots are separated from the return envelope before the ballots are inspected. This process ensures confidentiality.

What if I forget to sign the return envelope?

Your elections office will contact you, if possible, to come to the elections office to sign it.

Can the public watch the election process?

All steps of the process are open to observation by the public. Contact your county elections official to make arrangements.

When will election results be known?

Initial results are released at 8pm election night and will continue to be updated through election night until all ballots have been counted. Final certified results will be available 30 days after the election.

Provisional Ballot Information

You will be issued a provisional ballot if:

- there is a question about your eligibility as a voter (for example, there is no evidence on file that you are an active or inactive voter in Oregon)
- you need to vote at a county elections office in a county other than the one you live in

In order to obtain a provisional ballot, you need to fill out a Provisional Ballot Request Form in person at the county elections office.

Your provisional ballot will not be counted until it is determined that you are eligible to vote.

After you have voted the ballot, you can call 1-866-ORE-VOTE (1-866-673-8683) or the county elections office in which you voted to find out if your ballot was counted. If your ballot was not counted, you can also find out the reason it was not counted.

If it is determined that you are ineligible to vote in this election, the completed Provisional Ballot Request Form will serve as your voter registration for future elections.

How to File a Complaint

Any registered voter may file a written complaint with the Secretary of State alleging that a violation of an election law or rule adopted by the Secretary of State has occurred. The complaint should state the reason for believing that the violation occurred and provide evidence relating to it. The complaint must be signed by the elector; anonymous complaints will not be accepted. The complaint should be mailed to, or filed at:

Secretary of State, Elections Division
255 Capitol St NE, Suite 501
Salem, OR 97310



Resources for Voters with Disabilities

Contact **your county elections office** or call **1 866 673 8683** to request these resources.

Alternate Format Ballots

- **HTML ballot**, available to voters who are unable to mark a printed ballot. Voters can vote in the privacy of their own home using their own accessible tools. Voters who do not have accessible tools at home may vote the HTML ballot using a **tablet computer**. An accessible computer station is located in every county elections office.
- **Large print ballot**, available to voters with low vision.

Alternate Format Voting Guides

- **Statewide Voters' Pamphlet**, available in digital audio or accessible text at www.oregonvotes.org. Request a CD of mp3 format audio files by phone.
- **Easy Voters' Guide**, available in digital audio or accessible text at www.lwvor.org/votersguide. English and Spanish versions are available in print.
- **Standard Voters' Guide**, available in digital audio or accessible text www.lwvor.org/votersguide. Large Print, Braille, CD and NSL compatible versions also are available. Contact Talking Book and Braille Services at **1 800 452 0292** to request this voting guide.

Additional Resources

- **Large print voter registration card**, available to voters with low vision.
- **Signature Stamp Attestation Card**. If, because of a disability, a person is unable to sign a ballot or registration card, they may use a signature stamp or other indicator that represents their signature. A signature stamp attestation form must be completed along with an updated (or new) voter registration card.

Voters Assistance

Contact **your county elections office** or call **1 866 673 8683** to request these resources.

I need assistance to vote

Any voter with a disability can request assistance to register to vote, vote their ballot and/or return their ballot. You can also request assistance from a caretaker, care provider or someone else you choose.

I want to assist a voter

Your county elections office can suggest resources you can use to help inform voters. Resources must be nonpartisan and unbiased.

Who can provide assistance?

- A County Voting Assistance Team
- A Facility Voting Assistance Team
- Someone chosen by the voter

Who can not provide assistance?

- The voter's employer
- An agent of the voter's employer
- A union officer or agent of a union of which the voter is a member

What is a facility voting assistance team?

A **congregate living facility** may form a Facility Assistance Team to assist voters living in their facility.

Teams must be made up of **two registered voters** that do not have the same political party affiliation.

Registering to Vote

To vote in Oregon you need to be registered in the county where you reside.

You can register if you can answer yes to these three questions:

- Are you a resident of Oregon?
- Are you a US citizen?
- Are you at least 17 years of age?

If you are 17 years of age, you will not receive a ballot until an election occurs on or after your 18th birthday.

How to register

You can register to vote online at www.oregonvotes.org or you can get a voter registration card at any of the following places:

- in this Voters' Pamphlet
- any county elections office
- the Secretary of State's Office
- some state agencies such as the Division of Motor Vehicles
- a voter registration drive

You can fill the card out in person or send it in by US mail.

You can also print out a registration card online at: www.oregonvotes.org.

To vote in the May 15, 2012, Primary Election, your completed voter registration card must be either:

- postmarked by Tuesday, April 24, 2012
- delivered to a county elections office by Tuesday, April 24, 2012 or
- delivered to any voter registration agency (e.g., DMV) by Tuesday, April 24, 2012.

If you register to vote online, your registration must be submitted by 11:59pm on Tuesday, April 24, 2012.

What information is required to register?

To complete your registration you will provide your:

- Full legal name
- Home address
- Date of birth
- Signature
- Valid identification

What are the identification requirements?

1. If you have a current, valid Driver's License, Permit or ID number issued by the State of Oregon Division of Motor Vehicles (DMV), you must provide it in the boxes on the card.

A suspended Driver's License is still valid; a revoked Driver's License is NOT valid.
2. If you do not have a current, valid Driver's License, Permit or ID number issued by the State of Oregon Division of Motor Vehicles, you must affirm this on the card by marking the appropriate circle and you must then provide the last four digits of your Social Security Number.
3. If you do not have a Social Security number, you must affirm this on the card by marking the circle in indicating you do not have a valid Driver's License or Social Security number.
4. If you do not have a Driver's License, Permit, ID number, or a Social Security number, and you are registering by mail, you must provide a copy of one of the following which shows the voter's name and current address:
 - valid photo identification
 - a paycheck stub
 - a utility bill
 - a bank statement
 - a government document
 - proof of eligibility under the Uniformed and Overseas Citizens Absentee Voting Act (UOCAVA) or the Voting Accessibility for the Elderly and Handicapped Act (VAEH)

If you do not provide valid identification, you will not be eligible to vote for Federal races. You will, however, still be eligible to vote for state and local contests.

Updating your voter registration

Once you have registered, you are responsible for keeping your information up to date. You can do this online at www.oregonvotes.org or by completing and returning a voter registration card with the new information. You should update your registration if you do any of the following:

- change your home address
- change your mailing address
- change your name
- change your signature
- want to change or select a political party
- will be away from home on election day

If you notify your county elections office of your change of residence address after May 10, 2012, you must request that a ballot be mailed to you or go to your county elections office to get your ballot.



Use online voter resources to register or update your registration status.
oregonvotes.org

qualifications

Are you a citizen of the United States of America? yes no

Are you at least 17 years of age? yes no

If you mark no in response to either of these questions, do not complete this form.

personal information *required information

last name* first* middle

Oregon residence address (include apt. or space number)* city* zip code*

date of birth (month/day/year)* county of residence

phone email

mailing address (required if different than residence) city/state zip code

Oregon Driver's License/ID number

Provide a valid **Oregon Driver's License, Permit or ID:**

I do not have a valid **Oregon Driver's License/Permit/ID**
 The last 4 digits of my Social Security Number (SSN) are:

x x x - x x -

I do not have a valid Oregon Driver's License/Permit/ID or a SSN. I have attached a copy of **acceptable identification**.

political party

Not a member of a party

- Constitution
- Democratic
- Independent
- Libertarian
- Pacific Green
- Progressive
- Republican
- Working Families
- Other _____

signature I swear or affirm that I am qualified to be an elector and I have told the truth on this registration.

sign here _____ date today _____

! If you sign this card and know it to be false, you can be fined up to \$125,000 and/or jailed for up to 5 years.

registration updates Complete this section if you are updating your information.

previous registration name previous county and state

home address on previous registration date of birth (month/day/year)

Baker

Tamara J. Green
Baker County Clerk
1995 3rd St., Suite 150
Baker City, OR 97814-3398
541-523-8207
TTY 541-523-9538
fax 541-523-8240
tgreen@bakercounty.org

Benton

James Morales
Benton County Clerk
Elections Division
120 NW 4th St., Room 13
Corvallis, OR 97330
541-766-6756
TTY 541-766-6080
fax 541-766-6757
bcelections@co.benton.or.us
www.co.benton.or.us/
admin/elections

Clackamas

Sherry Hall
Clackamas County Clerk
Elections Division
1710 Red Soils Court,
Suite 100
Oregon City, OR 97045
503-655-8510
TTY 503-655-1685
fax 503-655-8461
elections@co.clackamas.or.us
www.clackamas.us/elections

Clatsop

Maeve Kennedy Grimes
Clatsop County Clerk
Elections Division
820 Exchange St.,
Suite 220
Astoria, OR 97103
503-325-8511
TTY 1-800-949-4232
fax 503-325-9307
clerk@co.clatsop.or.us
www.co.clatsop.or.us

Columbia

Elizabeth (Betty) Huser
Columbia County Clerk
Courthouse, 230 Strand St.
St. Helens, OR 97051-2089
503-397-7214 or
503-397-3796
TTY 503-397-7246
fax 503-397-7266
Betty.Huser@co.columbia.or.us
www.co.columbia.or.us

Coos

Terri L. Turi, CCC
Coos County Clerk
Courthouse, 250 N. Baxter
Coquille, OR 97423-1899
541-396-3121 ext. 301
TTY 1-800-735-2900
fax 541-396-6551
elections@co.coos.or.us
www.co.coos.or.us

Crook

Deanna (Dee) Berman
Crook County Clerk
300 NE Third, Room 23
Prineville, OR 97754-1919
541-447-6553
TTY 541-416-4963
fax 541-416-2145
dee.berman@co.crook.or.us
www.co.crook.or.us

Curry

Reneé Kolen
Curry County Clerk
PO Box 746
Gold Beach, OR 97444
541-247-3297 or
1-877-739-4218
TTY 1-800-735-2900
fax 541-247-6440
www.co.curry.or.us/Clerk

Deschutes

Nancy Blankenship
Deschutes County Clerk
1300 NW Wall St.,
Suite 202
Bend, OR 97701
541-388-6547
TTY 1-800-735-2900
fax 541-383-4424
elections@deschutes.org
www.deschutes.org

Douglas

Patricia Hitt
Douglas County Clerk
PO Box 10
Roseburg, OR 97470-0004
541-440-4252
TTY 1-800-735-2900
fax 541-440-4408
elections@co.douglas.or.us

Gilliam

Rena Kennedy
Gilliam County Clerk
PO Box 427
Condon, OR 97823-0427
541-384-2311
rena.kennedy@
co.gilliam.or.us
www.co.gilliam.or.us

Grant

Brenda Percy
Grant County Clerk
201 S. Humbolt, Suite 290
Canyon City, OR 97820
541-575-1675
TTY 541-575-1675
fax 541-575-2248
percyb@grantcounty-or.gov

Harney

Maria Iturriaga
Harney County Clerk
Courthouse,
450 N. Buena Vista #14
Burns, OR 97720
541-573-6641
fax 541-573-8370
clerk@co.harney.or.us
www.co.harney.or.us

Hood River

Brian D. Beebe
Director,
Records/Assessment
601 State St.
Hood River, OR 97031-1871
541-386-1442
fax 541-387-6864

Jackson

Christine Walker
Jackson County Clerk
1101 W. Main St., Suite 201
Medford, OR 97501-2369
541-774-6148
TTY 541-774-6719
fax 541-774-6140
walkercd@jacksoncounty.org
www.co.jackson.or.us

Jefferson

Kathy Marston
Jefferson County Clerk
66 SE "D" St., Suite C
Madras, OR 97741
541-475-4451
fax 541-325-5018
kathy.marston@
co.jefferson.or.us

Josephine

Art Harvey
Josephine County Clerk
PO Box 69
Grants Pass, OR 97528-0203
541-474-5243
TTY 1-800-735-2900
fax 541-474-5246
clerk@co.josephine.or.us

Klamath

Linda Smith
Klamath County Clerk
305 Main St.
Klamath Falls, OR 97601
541-883-5157 or
1-800-377-6094
fax 541-885-6757
KlamathCountyElections@
Klamathcounty.org
www.klamathcounty.org

Lake

Stacie Geaney
Lake County Clerk
513 Center St.
Lakeview, OR 97630-1539
541-947-6006

Lane

Cheryl Betschart
Lane County Clerk
275 W. 10th Ave.
Eugene, OR 97401-3008
541-682-4234
TTY 541-682-4320
fax 541-682-2303
elections.customer@
co.lane.or.us
www.co.lane.or.us/elections

Lincoln

Dana Jenkins
Lincoln County Clerk
225 W. Olive St., Room 201
Newport, OR 97365
541-265-4131
TTY 541-265-4193
fax 541-265-4950
www.co.lincoln.or.us/clerk

Linn

Steve Druckenmiller
Linn County Clerk
300 SW 4th Ave.
Albany, OR 97321
541-967-3831
TTY 541-967-3833
fax 541-926-5109
sdruckenmiller@co.linn.or.us

Malheur

Deborah R. DeLong
Malheur County Clerk
251 "B" St. West, Suite 4
Vale, OR 97918
541-473-5151
TTY 541-473-5157
fax 541-473-5523
countyclerk@malheurco.org
www.malheurco.org

Marion

Bill Burgess
Marion County Clerk
4263 Commercial St. SE,
#300
Salem, OR 97302-3987
503-588-5041 or
1-800-655-5388
TTY 503-588-5610
elections@co.marion.or.us
www.co.marion.or.us/co/
elections

Morrow

Bobbi Childers
Morrow County Clerk
PO Box 338
Heppner, OR 97836-0338
541-676-5604
TTY 541-676-9061
fax 541-676-9876
bchilders@co.morrow.or.us

Multnomah

Tim Scott
Director of Elections
1040 SE Morrison St.
Portland, OR 97214-2495
503-988-3720
fax 503-988-3719
elections@multco.us
www.mcelections.org

Polk

Valerie Unger
Polk County Clerk
850 Main St.
Dallas, OR 97338-3179
503-623-9217
fax 503-623-0717
unger.valerie@co.polk.or.us
www.co.polk.or.us

Sherman

Jenine McDermid
Sherman County Clerk
500 Court St.
PO Box 365
Moro, OR 97039-0365
541-565-3606
fax 541-565-3771
countyclerk@
shermancounty.net
www.sherman-county.com/
govt_clerk.asp

Tillamook

Tassi O'Neil
Tillamook County Clerk
201 Laurel Ave.
Tillamook, OR 97141
503-842-3402 or
1-800-488-8280 ext. 4000
fax 503-842-1599
clerk@co.tillamook.or.us
www.co.tillamook.or.us

Umatilla

Patti Chapman
Director of Elections
PO Box 1227
Pendleton, OR 97801
541-278-6254
fax 541-278-5467
pattic@co.umatilla.or.us
www.co.umatilla.or.us

Union

Robin Church
Union County Clerk
1001 4th St., Suite D
LaGrande, OR 97850
541-963-1006
fax 541-963-1013
rchurch@union-county.org
www.union-county.org

Wallowa

Dana Roberts
Wallowa County Clerk
101 S. River St., Room 100
Enterprise, OR 97828-1335
541-426-4543 ext. 158
fax 541-426-5901
wcclerk@co.wallowa.or.us
www.co.wallowa.or.us

Wasco

Linda Brown
Wasco County Clerk
511 Washington St.,
Room 201
The Dalles, OR 97058
541-506-2530
fax 541-506-2531
lindab@co.wasco.or.us

Washington

Mickie Kawai
Elections Division
3700 SW Murray Blvd.,
Suite 101
Beaverton, OR 97005
503-846-5800
TTY 503-846-4598
elections@co.washington.or.us
www.co.washington.or.us/
elections

Wheeler

Barbara S. Sitton
Wheeler County Clerk
PO Box 327
Fossil, OR 97830-0327
541-763-2400
TTY 541-763-2401
fax 541-763-2026
bsitton@co.wheeler.or.us

Yamhill

Rebekah (Becky) Stern Doll
Yamhill County Clerk
414 NE Evans St.
McMinnville, OR 97128-4607
503-434-7518
TTY 1-800-735-2900
fax 503-434-7520
elections@co.yamhill.or.us
www.co.yamhill.or.us/clerk

It is against the law to:

- sign another person's ballot return envelope for them
- vote more than once in an election or cast a fraudulent ballot
- vote a ballot if you are not legally qualified
- coerce, pressure or otherwise unduly influence another voter
- sell, offer to sell, purchase or offer to purchase another voter's ballot
- obstruct an entrance of a building in which a voting booth or official ballot dropsite is located
- deface, remove, alter or destroy another voter's ballot, a posted election notice or election equipment or supplies
- attempt to collect voted ballots within 100 feet of an official ballot dropsite
- attempt to collect voted ballots without displaying a sign stating "Not An Official Ballot Dropsite"

Any violations of the identified election laws are subject to penalties ranging from Civil Penalties (Up to \$250 per Violation), Class A Misdemeanors or Class C Felonies.

If you have any other questions about voting in Oregon or if you think that your rights as a voter have been violated:

➤ **oregonvotes.org**



1 866 673 VOTE / 1 866 673 8683

se habla español

TTY 1 800 735 2900

for the hearing impaired

Name	Page
Angeli, Michael P	33
Arlow, Allan J	28
Baldwin, Richard C	27
Bellet, James	22
Bicknell, Brian P	32
Brewer, Dave	25
Broussard, Ron	32
Brown, Kate	8
Bryson, Brian	33
Buckley, Peter	11
Buehler, Knute	16
Collins, Charles (Chuck)	31
Cook, Nena	26
Egan, James C	29
Garee, John	21
Gingrich, Newt	14
Hadlock, Erika	30
Holton, Dwight	10
Huddle, John	11
Hukill, Cheryl	23
Jefcoat, Dennis N	22
Link, Jason	30
Liskey, Tracey	19
Mallams, Tom	21
McLane, Mike	18
Minty Morris, Kelley	20
Nakamoto, Lynn R	29
Obama, Barack	7
Paul, Ron	14
Romney, Mitt	15
Rosenblum, Ellen	10
Scronce, Karl	17
Segers, Joyce B	7
Sercombe, Timothy J	26
Skrah, Frank	31
Switzer, Al	20
Volpert, Tim	28
Walden, Greg	15
Wells, Paul Damian	8
Wheeler, Ted	9
Whitsett, Douglas K	17
Whitsett, Gail	19

Secretary of State

Kate Brown
State Capitol
Salem, OR 97310-0722

NONPROFIT
CAR-RT SORT
U.S. Postage
PAID
Portland, OR
Permit No. 815



Residential Customer

vote!



Voters' Pamphlet
Oregon Primary Election
May 15, 2012

18 Klamath