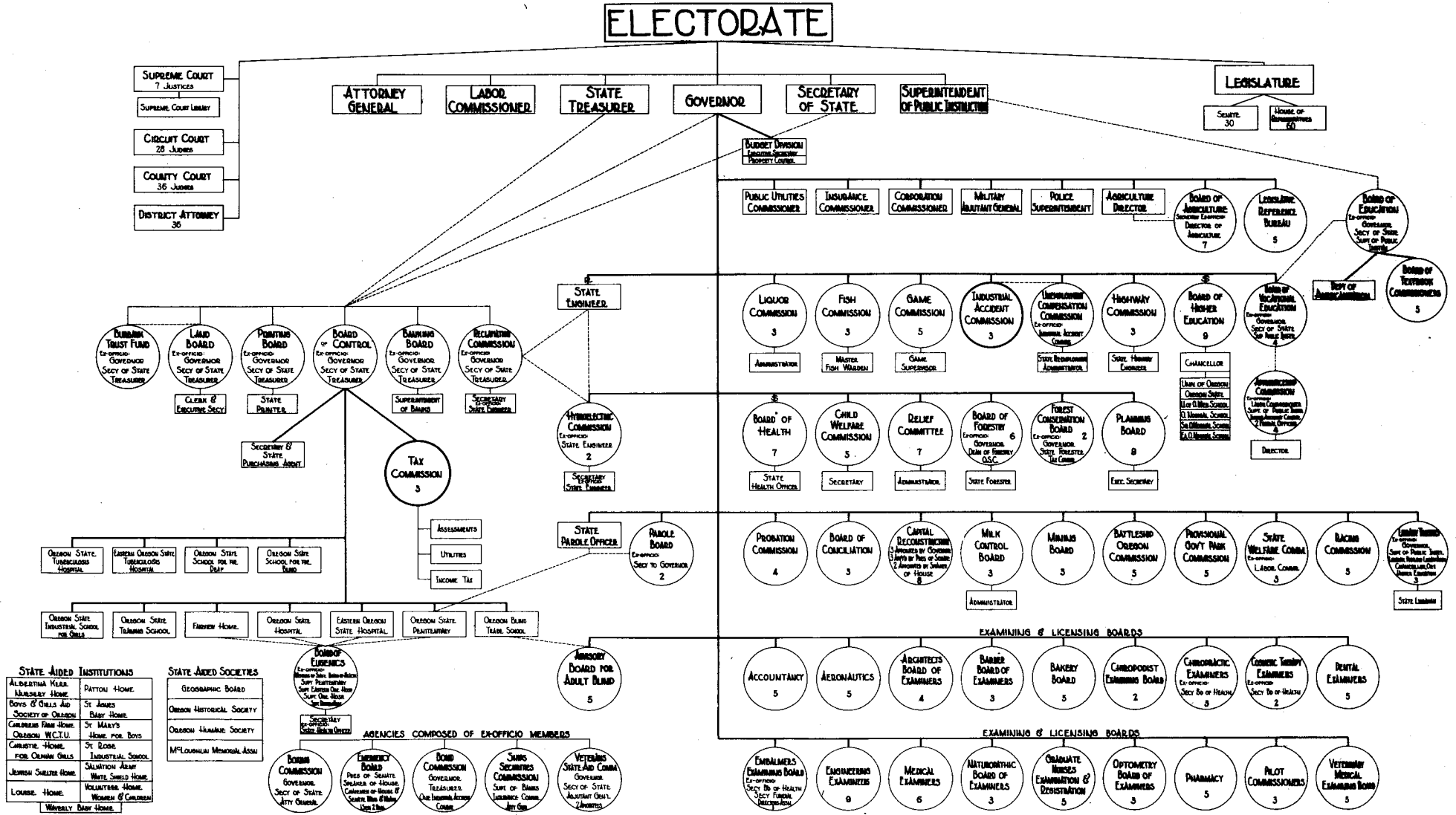


ORGANIZATION OF THE STATE GOVERNMENT IN OREGON-1936



CIRCLES: INDICATE BOARDS, COMMISSIONS, MULTIPLE MEMBER AGENCIES.
HEAVY BLACK CIRCLES: INDICATE MEMBERS OF COMMISSIONS ARE EMPLOYED FULL TIME.
HEAVY BLACK LINES: INDICATE LINE OF RESPONSIBILITY & APPOINTIVE POWER.

RECTANGLES: INDICATE SINGLE EXECUTIVE OFFICES.
NUMERALS: INDICATE THE NUMBER OF APPOINTED OR ELECTED MEMBERS.

DOTTED LINES: INDICATE CLOSE RELATIONSHIP BETWEEN AGENCIES IN THE MEMBERS OF ONE OR ALL MEMBERS OF AGENCY OF ONE LOADED IN OFFICES OF OTHER.

§: INDICATES APPOINTMENT REQUIRES CONSENT OR APPROVAL OF SENATE.
R: INDICATES APPOINTMENT REQUIRES APPROVAL OF RECLAMATION COMMISSION.

PREPARED BY
OREGON STATE PLANNING BOARD
WPA PROJECT O.P. 225-0805 & O.P. 65-94-823
H. NEARLY - DIRECTOR OF RESEARCH
MAY 1936

101

2311