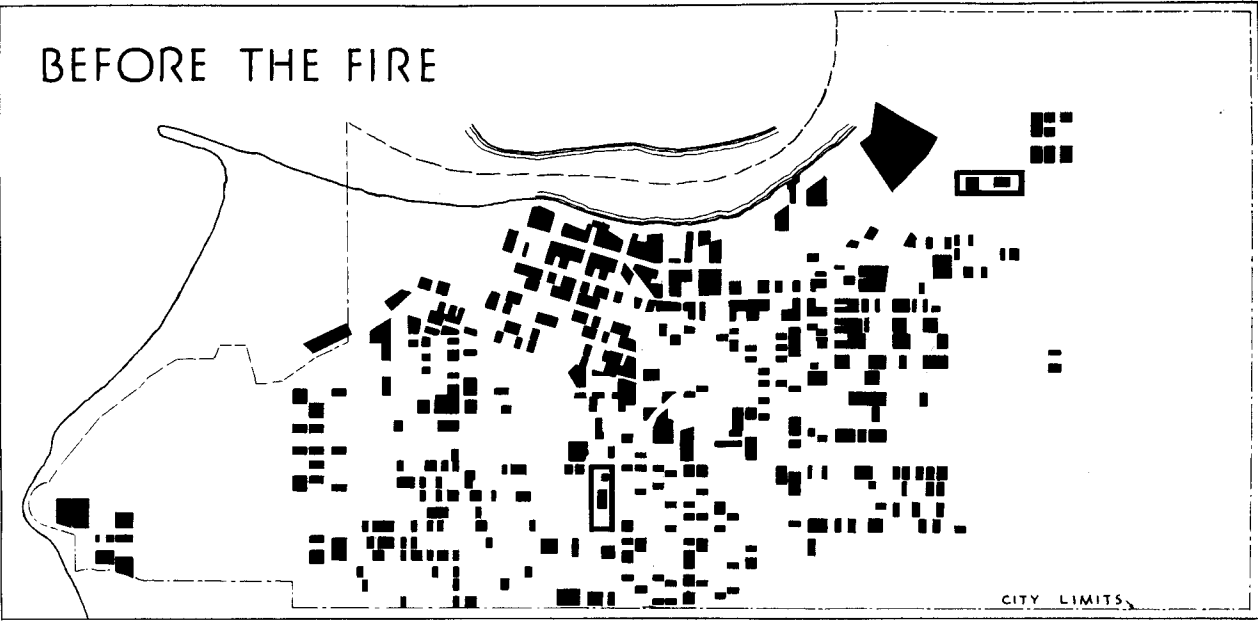
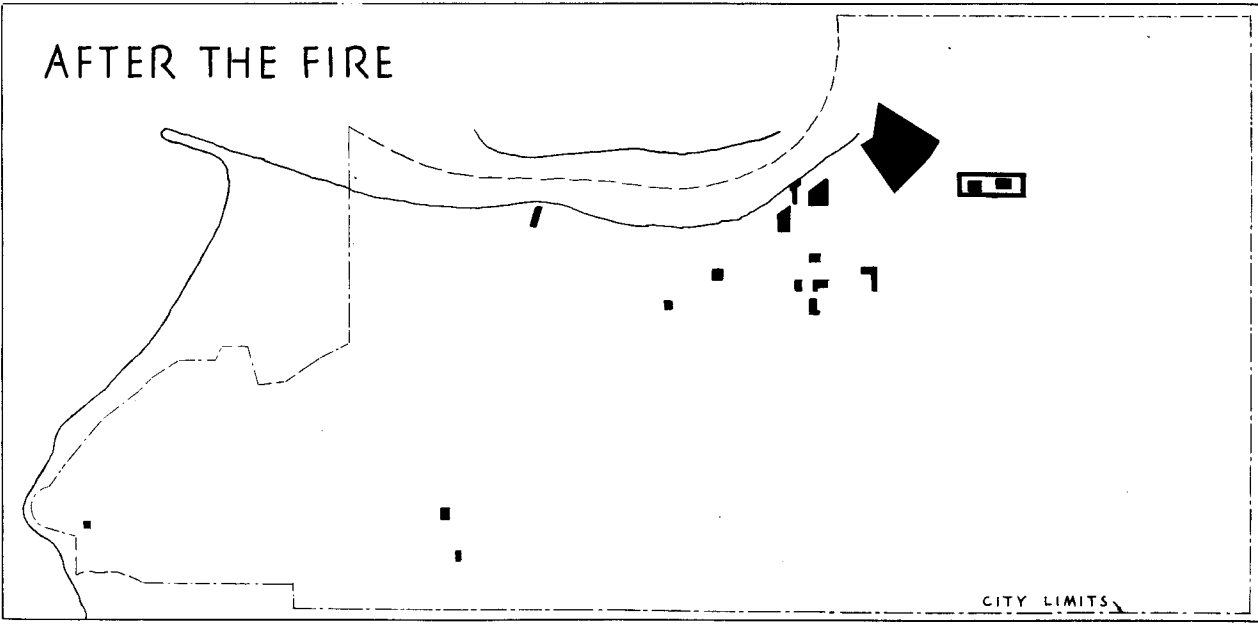


BEFORE THE FIRE



CITY LIMITS

AFTER THE FIRE



CITY LIMITS



SCALE IN FEET
 0 500 1000 1500

■ INDICATES
 CITY LOTS USED
 FOR ANY PURPOSE

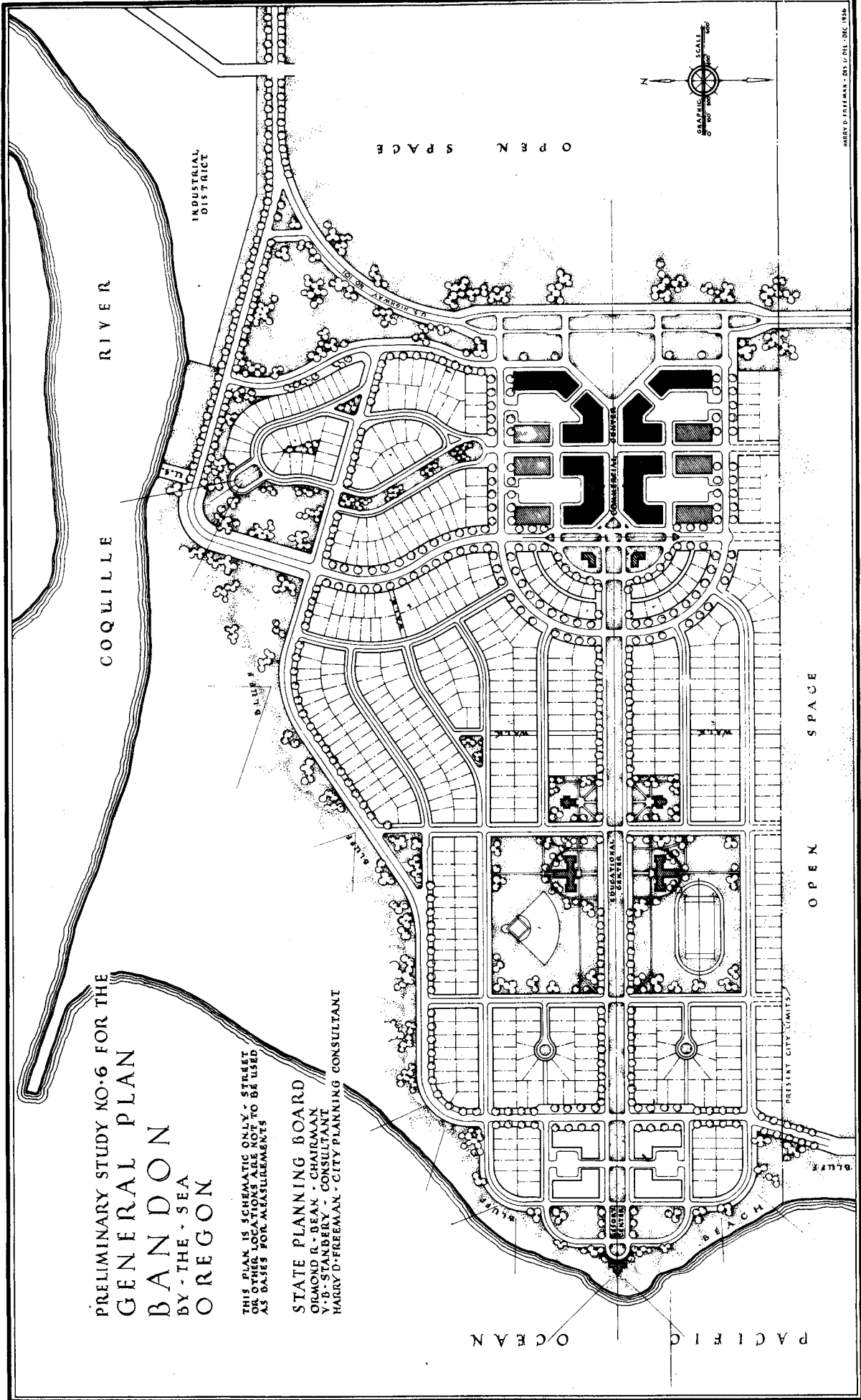
AREAS OCCUPIED
 BEFORE & AFTER THE FIRE
 OF SEPTEMBER 26 ~ 1936

BANDON - OREGON

STATE PLANNING
 BOARD

ORMOND R. BEAN - CHAIRMAN
 V. B. STANBERY - CONSULTANT
 HARRY D. FREEMAN
 CITY PLANNING CONSULTANT

NO. H 269

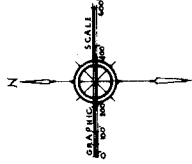


PRELIMINARY STUDY NO. 6 FOR THE
GENERAL PLAN
BANDON
 BY THE SEA
 OREGON

THIS PLAN IS SCHEMATIC ONLY - STREET
 LOCATIONS ARE NOT TO BE USED
 AS BASES FOR MEASUREMENTS

STATE PLANNING BOARD

ORMOND R. BEAN - CHAIRMAN
 V. B. STARKER - CONSULTANT
 HARRY D. FREEMAN - CITY PLANNING CONSULTANT



HARRY D. FREEMAN - DS. 11. 01. DEC. 1936



PRELIMINARY STUDY
 GENERAL PLAN
 BANDON
 BY THE SEA
 OREGON

STATE PLANNING BOARD
 CLAYTON A. BEAN, CHAIRMAN
 905 STANDERLY CONSULTANT
 HENRY D. BEEBEWAL, CITY PLANNER