



Se



51446

Trade and Service Marks - Registration

7310-1327 - http://www.FilingInOregon.com - Phone: (503) 986-2200

FILED

MAR 10 2021

OREGON SECRETARY OF STATE

REGISTRY NUMBER: 51446

For office use only

For office use only

In accordance with Oregon Revised Statute 192.410-192.490, the information on this application is public record. We must release this information to all parties upon request.

Please Type or Print Legibly in Black ink. Attach additional Sheets if Necessary.

1) CORRESPONDENT NAME: Randy Troxel MAILING ADDRESS: 1990 N. California Blvd., 8th Floor, Walnut Creek CA 94596

2) APPLICANT'S NAME: (Owner: Individual or Entity) ADDRESS: Nachurs Alpine Solutions, LLC, dba Key Grow Solutions, 421 Leader St., Marion OH 43302

3) IF THE APPLICANT IS AN ENTITY, ENTER THE STATE OF FORMATION: Ohio

4) IF ENTITY IS A PARTNERSHIP, LIST NAMES OF GENERAL PARTNERS:

5) DESCRIPTION OF TRADE OR SERVICE MARK: (Include all words, designs and borders that comprise the mark) (Attach additional page if needed.) Key Grow Solutions

6) SPECIMEN OF MARK IS REQUIRED: Attach a drawing or photocopy of the mark as it is actually used to this application.

7) GOODS OR SERVICES WITH WHICH THE MARK IS USED: (Examples of goods are pizzas, shirts; examples of services are serving food and selling clothing.) see attached

8) EXPLAIN MODE OR MANNER IN WHICH THE MARK IS USED: (Example: on goods, tags, labels, containers, etc.) on labels affixed to product packaging

9) CLASS NUMBER(S) OF GOODS OR SERVICES: (See form 290-a) 101

10) DATE (MONTH, DAY, YEAR) MARK WAS FIRST USED ANYWHERE BY APPLICANT OR APPLICANT'S PREDECESSOR IN INTEREST: 07/09/2018

11) DATE (MONTH, DAY, YEAR) MARK WAS FIRST USED IN OREGON BY APPLICANT OR APPLICANT'S PREDECESSOR IN INTEREST: 09/09/2018

12) EXECUTION: I, the applicant, own the mark, the mark is in use, and no other person has registered the mark with the federal government or in Oregon or has the right to use the mark or a mark that so resembles the mark as to be likely to cause confusion or mistake or deceive when applied to the goods or services of the other person. I declare under penalties of perjury that this application is true, correct and complete.

(If applicant is an entity, a member of a firm, officer of the corporation, officer of the limited liability company, or officer of an association must sign.)

Signature: [Handwritten Signature] Title: V.P, Marketing Date: 2-8-21

CONTACT NAME: (To resolve questions with this filing.) Randy Troxel PHONE NUMBER: (Include area code.) 650-692-1700

Table with 2 columns: Fee Type, Amount. Includes 'Required Processing Fee \$50.00' and a note: 'Processing Fees are nonrefundable. Please make check payable to "Corporation Division."'

7) GOODS OR SERVICES WITH WHICH THE MARK IS USED:

A house mark for a full line of hydroponic gardening products, namely, plant nutrients, fertilizers, and soil additives for use in agriculture, horticulture, farming, and cultivation

GUARANTEED ANALYSIS:

Total Nitrogen (N)	6%
1.0% Ammoniacal Nitrogen	
4.9% Urea Nitrogen	
0.1% Other Water Soluble Nitrogen	
Available Phosphate (P ₂ O ₅)	4%
Soluble Potash (K ₂ O)	5%
Boron (B)	0.075%
Cobalt (Co)	0.001%
Copper (Cu)	0.15%
0.15% Chelated Copper (Cu)	
Iron (Fe)	0.2%
0.2% Chelated Iron (Fe)	
Manganese (Mn)	0.75%
0.75% Chelated Manganese (Mn)	
Molybdenum (Mo)	0.001%
Zinc (Zn)	0.75%
0.75% Chelated Zinc (Zn)	

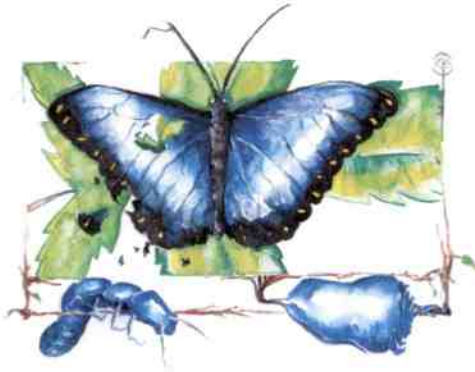
Derived From: Urea, Ammonium Polyphosphate, Phosphoric Acid, Potassium Hydroxide, Potassium Acetate, Sodium Borate, Copper EDTA, Manganese EDTA, Zinc EDTA, Cobalt Sulfate, Sodium Molybdate, Iron EDTA, and Soy Protein Hydrolysate.

ALSO CONTAINS NON-PLANT FOOD INGREDIENTS:

0.75% Alkyl Polyglycoside
99.25% Inert



6-4-5



BLUE BUTTERFLY

Blue Butterfly Micronutrients For Bountiful Buds

1 gal (3.785 L) Net wt 10.06 lb (4.56 kg)



421 Leader St.
Marion, OH 43302
(614) 202-0919
info@keygrownsolutions.com
keygrownsolutions.com

Blue Butterfly is a micronutrient enriched premium liquid fertilizer that provides nutrients at critical growth stages.

DIRECTIONS FOR USE:

Use 1 mL per liter of water during early vegetative stage. For the remainder of the grow cycle, use 1.5–2.5 per liter of water.

SHAKE WELL BEFORE USING.

KEEP OUT OF THE REACH OF CHILDREN.

STORAGE CONDITIONS:

Store in original container in clean, dry area and avoid temperature extremes.

For more information or SDS for this product, visit keygrownsolutions.com or call (614) 202-0919.

KGS NOR THE SELLER WILL NOT BE HELD LIABLE FOR ANY INDIRECT/DIRECT ISSUES FROM THE USE OF THIS PRODUCT UNLESS THE PRODUCT IS PROVEN TO BE DEFECTIVE. INFORMATION REGARDING THE CONTENTS AND LEVELS OF METALS IN THIS PRODUCT IS AVAILABLE ON THE INTERNET <http://www.aapfco.org/metals.htm>



DANGER

HAZARD STATEMENTS: MAY DAMAGE FERTILITY OR THE UNBORN CHILD (ORAL).
PRECAUTIONARY STATEMENTS: OBTAIN SPECIAL INSTRUCTIONS BEFORE USE. DO NOT HANDLE UNTIL ALL SAFETY PRECAUTIONS HAVE BEEN READ AND UNDERSTOOD. WEAR PROTECTIVE GLOVES, PROTECTIVE CLOTHING, AND EYE PROTECTION. IF EXPOSED OR CONCERNED: GET MEDICAL ADVICE/

ATTENTION. STORE LOCKED UP. DISPOSE OF CONTENTS/CONTAINER IN ACCORDANCE WITH LOCAL, REGIONAL, NATIONAL, AND INTERNATIONAL REGULATIONS. **WARNING:** EXPOSURE MAY AGGRAVATE PRE-EXISTING EYE, SKIN, OR RESPIRATORY CONDITIONS.

WARNING: BORON IS TO BE USED WHERE SOIL TEST AND/OR TISSUE ANALYSIS INDICATE A DEFICIENCY, AND SHOULD NOT BE USED AT RATES IN EXCESS OF THE RATE RECOMMENDED BY A QUALIFIED INDIVIDUAL/ENTITY SUCH AS A CERTIFIED CROP ADVISOR, AGRONOMIST OR UNIVERSITY. EXCESSIVE APPLICATION OF BORON MAY CAUSE CROP DAMAGE. THIS FERTILIZER IS TO BE USED ONLY ON GROWING MEDIA WHICH RESPONDS TO MOLYBDENUM. CROPS HIGH IN MOLYBDENUM ARE TOXIC TO GRAZING ANIMALS (RUMINANTS).

USE IN ACCORDANCE WITH RECOMMENDATIONS OF A QUALIFIED INDIVIDUAL OR INSTITUTION, SUCH AS, BUT NOT LIMITED TO, A CERTIFIED CROP ADVISOR, AGRONOMIST, UNIVERSITY PUBLICATION OR APPLY ACCORDING TO RECOMMENDATIONS IN YOUR APPROVED NUTRIENT MANAGEMENT PLAN.

FL- #F002550

BUY NOW - AGRON

- [HOME](#)
- [PRODUCTS](#) ▾
- [SCIENCE & TECHNOLOGIES](#)
- [FEEDING](#)
- 
- [BLOG](#)
- [GALLERY](#)
- [ABOUT](#)
- [CONTACT](#)

During this time of unprecedented uncertainty, Key Grow Solutions is actively implementing our plan to continue to provide quality nutrients while protecting our customers and staff members. We want to ensure that every effort is being made to continue to deliver products to our valued customers. Please contact Joel Perkins at (614) 202-0919 with any questions.



High Technology Nutrients

BUY NOW - AGRON[HOME](#)[PRODUCTS](#) ▾[BLOG](#)[GALLERY](#)[ABOUT](#)[CONTACT](#)[SCIENCE & TECHNOLOGIES](#)[FEEDING](#)

Key Grow Solutions offers cannabis growers a collection of innovative nutritional products that are specifically designed to improve the effectiveness, efficiency, and balance of cannabis biological systems – contributing to faster growth, exceptional yields, and an increase in craft quality, all while simplifying the plant feeding process.

We accomplish this with our breakthrough formulation technology, which significantly improves the availability, consistency, and performance of our nutrients and supplements. This state-of-the-art delivery system is unique to Key Grow Solutions.

Our website will help provide background information on critical biological systems that impact cannabis production and how Key Grow Solutions uses these systems to improve your production outcome.



BUY NOW - AGRON

HOME **PRODUCTS** ▾ **KEY GROW** **BLOG** **GALLERY** **ABOUT** **CONTACT**
SCIENCE & TECHNOLOGIES **FEEDING**



Polyamine Technology

Our proprietary polyamine technology addresses solubility issues caused by antagonism by forming unique chelate structures with cations, blocking unfavorable binding reactions such as "salting out." Our nutrients and supplements also remain available and active



Potassium Acetate & Carbohydrates

The acetate constituent in our potassium acetate provides a direct source of the starting material used to initiate energy production in plant cells (KREBS cycle), Acetyl Coenzyme A, without the carbohydrate draw



Plant Growth Promoting Rhizobacteria (PGPR)

PGPRs have the natural ability to improve nutrient utilization, which helps the plant to better tolerate biotic and abiotic interactions. This is done

BUY NOW - AGRON

- [HOME](#)
- [PRODUCTS](#) ▾
- [SCIENCE & TECHNOLOGIES](#)
- [FEEDING](#)



- [BLOG](#)
- [GALLERY](#)
- [ABOUT](#)
- [CONTACT](#)

[Learn More](#)

such as nutrient availability, root hair proliferation, and systemic mechanisms, just to name a few.

[Learn More](#)

Recent Blog Articles

BUY NOW - AGRON

- [HOME](#)
- [PRODUCTS](#) ▾
- [SCIENCE & TECHNOLOGIES](#)
- [FEEDING](#)
- 
- [BLOG](#)
- [GALLERY](#)
- [ABOUT](#)
- [CONTACT](#)

**KGS with Higher Peaks
from Oregon Rooted: The
Dirt Show**

Recently, we were privileged to sit down with Higher Peaks from Oregon Rooted: The Dirt Show, one of our favorite cultivation-

**Green Dragon: Terpenes
and Cannabinoid
Production**

Terpene and Cannabinoid Production Most Cannabis growers consider the reproduction (flowering) stage

**Green Dragon: Sugar
signaling in cannabis
production**

It is well established that in plants, production of carbohydrates (sugars) via photosynthesis is a vital

BUY NOW - AGRON

HOME

PRODUCTS ▾



BLOG

GALLERY

ABOUT

CONTACT

SCIENCE & TECHNOLOGIES

FEEDING



(614) 202-0919

support@keygrowsolutions.com

BUY NOW -
AGRON

HOME

ABOUT

CONTACT



BIOFLORAL®

51446