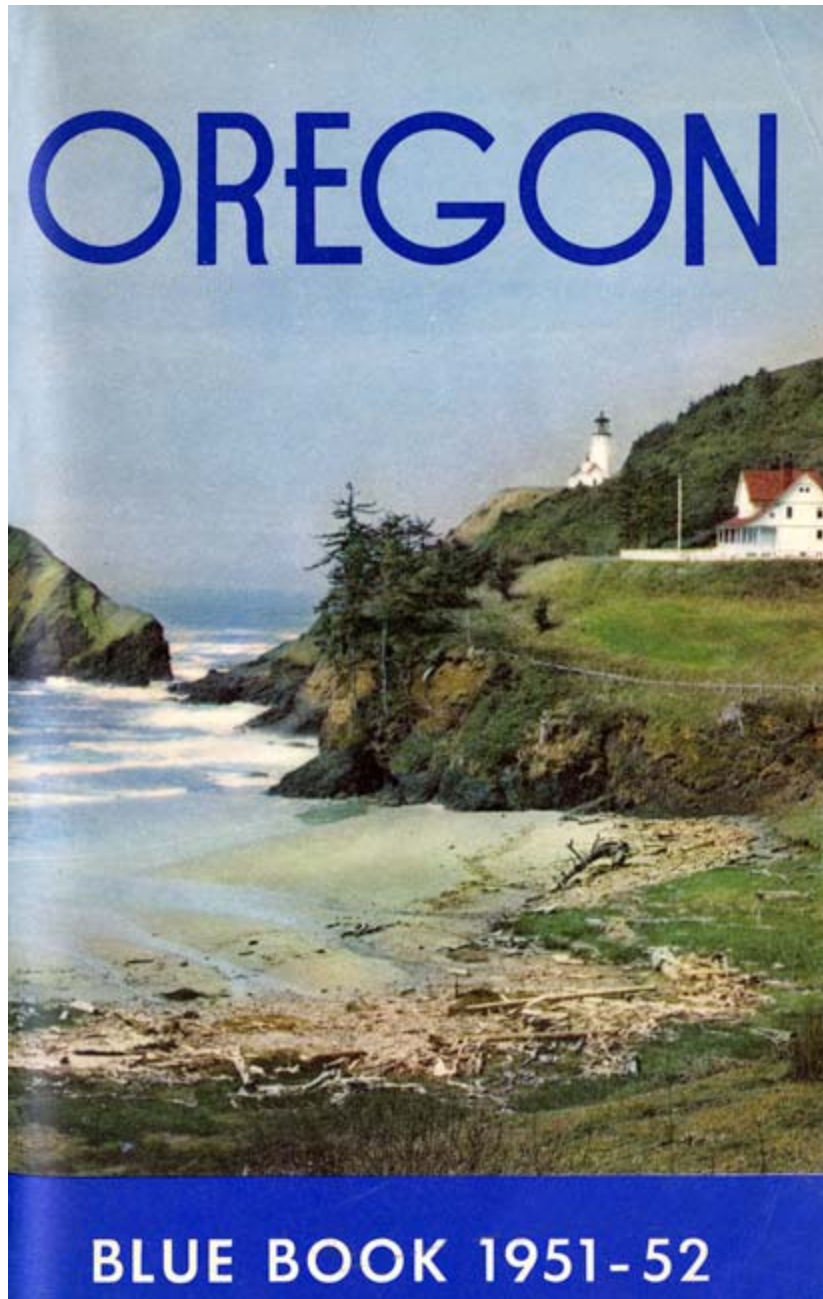


Oregon Secretary of State

(<https://sos.oregon.gov/blue-book>)

Oregon Blue Book Centennial Web Exhibit





About the Exhibit



Welcome to this exhibit of over 100 images celebrating a century of the *Oregon Blue Book*. Part one of the exhibit displays most of the *Oregon Blue Book* covers over the last 100 years. Part two explores images of Oregon from the pages of the *Oregon Blue Book* over the decades.

Official web site of
Oregon Secretary of State

<https://sos.oregon.gov/blue-book>

Oregon Blue Book Centennial Web Exhibit

Progressive Era Origins

The *Oregon Blue Book* was born during the Progressive Era, a period from the 1880s to 1920s, in reaction to the stranglehold on power held by cronyism and political machines in the United States. Many of the movement's reform efforts focused on exposing corruption and strengthening democracy. Central to this was the belief that government should come out of the smoke-filled back rooms and into the disinfecting sunlight. Progressives created the *Oregon Blue Book* to provide citizens with important information about how their government operated and who was accountable.

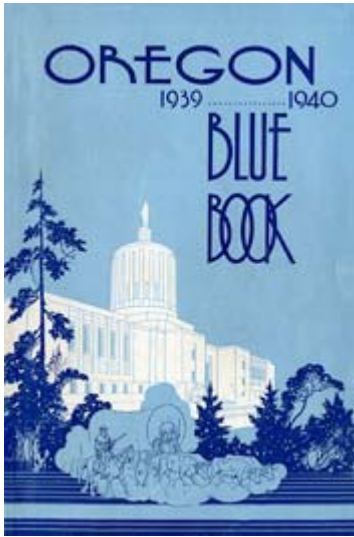


Evolution of the Oregon Blue Book

The first *Oregon Blue Book*, published in 1911, had a connection to a great name in Oregon history. In his official capacity as state printer from 1907 to 1915, Willis S. Duniway, son of Oregon pioneer and woman suffrage leader Abigail Scott Duniway, oversaw the typesetting and printing of the first three *Oregon Blue Books*. His uncle, Harvey Scott, was a powerful figure as the longtime editor and publisher of the *Oregonian* newspaper. His nephew, David Duniway later became Oregon's first state archivist in 1946.

The 1911 *Oregon Blue Book* adopted a promotional style and featured photographs that extolled the virtues of the state—from its agriculture and industry to its scenic beauty and tourism opportunities. For example, one passage expounded that “high above the clouds towers snow-capped Mount Hood, magnificent in its supreme eminence and in its beauty and ruggedness.” Later *Oregon Blue Books* took a more informational approach with fewer photographs and less boosterism.

Over the decades, the work to gather information and compile each edition of the *Oregon Blue Book* was done by the secretary of state's executive office staff. By the 1970s, the project had become too large for the executive office staff. The work was delegated to other divisions of the Secretary of State's Office for numerous editions. Private companies contracted to produce several *Oregon Blue Books* during this period.



However, with contract costs mounting by 1998, the job of producing the *Oregon Blue Book* was given to the Oregon State Archives, a division of the Secretary of State's Office. The last ten *Oregon Blue Books* have been compiled and edited by the Oregon State Archives staff.

Several covers, such as this one from 1939-1940, featured an Art Deco style.

Color Insert

The change in responsibility brought revisions in the formatting, production, and the overall look of the publication. Prior to 1999, black and white images documenting recent events and illustrating the work of agencies were integrated throughout the *Oregon Blue Book*. In contrast, the 1999-2000 edition reduced the number of black and white images but added a 32-page color insert on glossy paper. This allowed the addition of high quality color photographs of state symbols as well as a colorful tour of the State Capitol.

The highlight of the color section in each edition has been a topical photographic exhibit or essay about Oregon history or culture. Over the years, these have celebrated Oregonians at work, colorful Oregon trademarks, the centennial of the 1905 Lewis and Clark Exposition, Depression Era public works, farms and ranches over 150 years old, and the centennial of woman suffrage in Oregon.

Cover Designs

Early *Oregon Blue Book* covers used very basic designs with text describing the directory and naming the secretary of state. In fact, the biggest modification to the covers during the first 17 years of publication was the addition of a U.S. flag. But that changed in 1929 when an illustration of the Circuit Rider statue in front of the State Capitol debuted on the cover. From that point forward, every cover has displayed a unique look.

As the covers evolved over time, they reflected the eras in which they were created. Covers from the 1930s featured beautiful Art Deco style illustrations and fonts. Post-World War II covers highlighted the scenic beauty of the state. Many *Oregon Blue Book* covers concentrated on the State Capitol as a natural focal point of state government.

Cover Photographs and Contests

The first photograph used on an *Oregon Blue Book* cover was an image of Big Lake and Mt. Washington near the Santiam Highway. It was taken by State Highway Commission photographer Ralph Gifford for the cover of the 1945-1946 edition. Scenic Oregon photos taken by the Highway Commission were used as cover images over much of the next three decades.

Two photos by famed Oregon photographer Ray Atkeson have appeared as *Oregon Blue Book* cover images: his panorama of Mount Hood taken from the ledge of the Salmon River canyon was selected by Secretary of State Mark Hatfield for the cover of the 1957-1958 *Oregon Blue Book*; and Atkeson's photo of the Metolius River in central Oregon was chosen by Secretary of State Norma Paulus for the cover of the 1979-1980 *Oregon Blue Book*.

In the 1980s, Secretary of State Barbara Roberts established a photo contest to solicit scenic Oregon images from Oregon's many talented amateur photographers. Roberts selected an image of the Eagle Cap Wilderness, taken by Jerry V. Hunt of Canby, for the cover of the 1985-1986 *Oregon Blue Book*. The cover photo contest continues to this day with excellent results. Each contest winner is invited to the State Capitol to participate in *Oregon Blue Book* release ceremonies and meet members of the legislature.

Value of the Oregon Blue Book

After a century of publication, the *Oregon Blue Book* continues to serve as a concise and accurate record of Oregon government and life. Browsing through the older editions of the book proves to be both nostalgic and informative. The current and previous editions are reference fixtures in Oregon public libraries and school libraries, where they are provided free of charge by law as a public service. Highly prized by newspaper editors, the books offer quick and ready information about who served as state senator from Coos County in 1919, the duties of the Oregon State Defense Council during World War II, or the size of the state adopted budget in 1997.

As the *Oregon Blue Book* enters its second century, its editors honor the work of their predecessors and look forward to carrying the effort into the future—a continuation of the historical record for Oregon.



Marvin A. Mann (right), winner of the cover contest for the 2005-2006 *Oregon Blue Book*, participates in a ceremony at the State Capitol with Secretary of State Bill Bradbury.

Official web site of
Oregon Secretary of State

<https://sos.oregon.gov/blue-book>

Oregon Blue Book Centennial Web Exhibit

1911-1912 Oregon Blue Book

The State Capitol in Salem. The building was destroyed by fire in 1935 and was replaced with the current State Capitol.

Slide 1 / of 52



Official web site of
Oregon Secretary of State

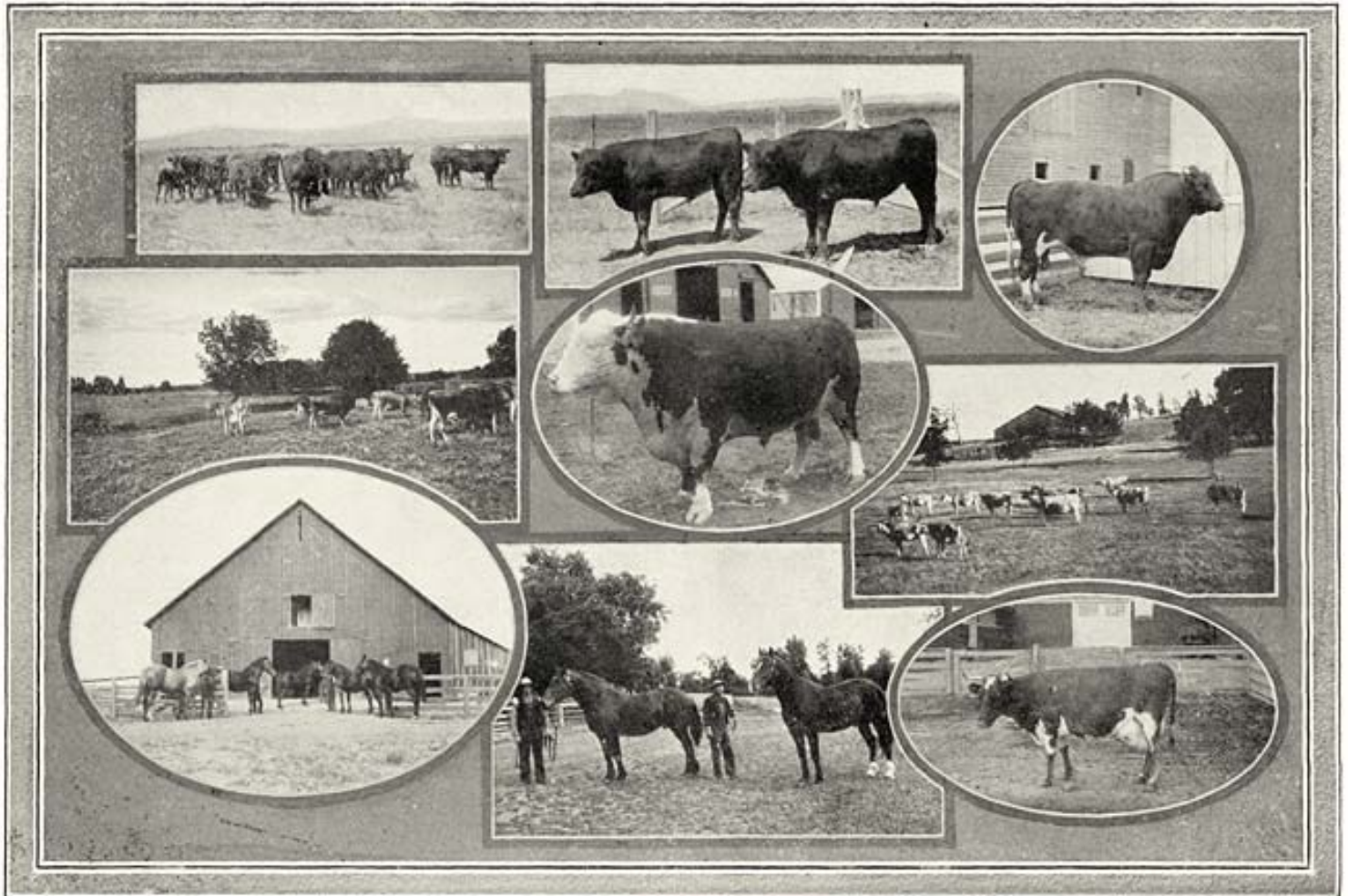
<https://sos.oregon.gov/blue-book>

Oregon Blue Book Centennial Web Exhibit

1911-1912 Oregon Blue Book

The book touted various products such as Oregon livestock.

Slide 2 / of 52



Official web site of
Oregon Secretary of State

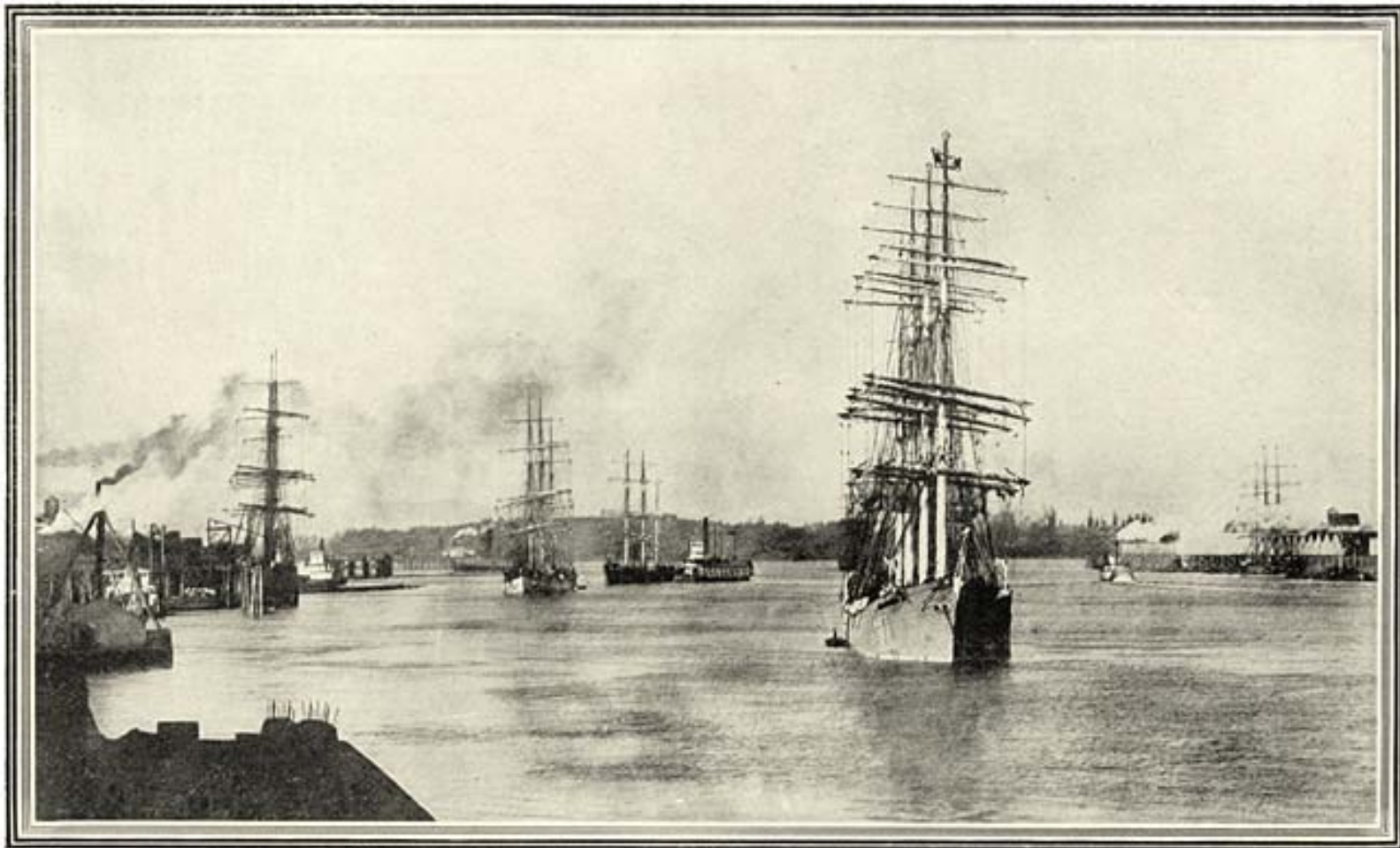
<https://sos.oregon.gov/blue-book>

Oregon Blue Book Centennial Web Exhibit

1911-1912 Oregon Blue Book

Ships in the Portland Harbor.

Slide 3 / of 52



Official web site of
Oregon Secretary of State

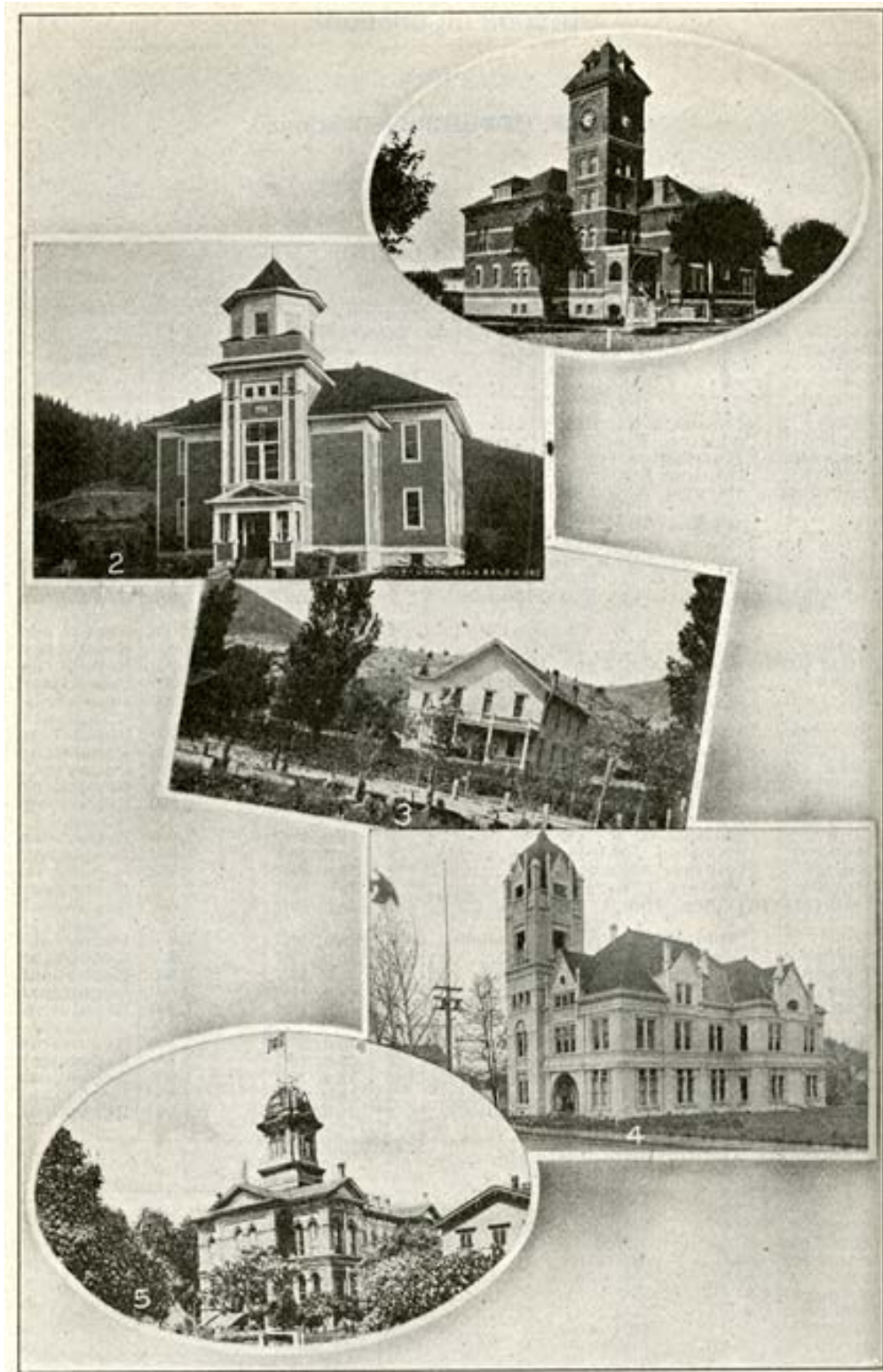
<https://sos.oregon.gov/blue-book>

Oregon Blue Book Centennial Web Exhibit

1915-1916 Oregon Blue Book

County courthouses from top to bottom: Lane County, Curry County, Grant County, Douglas County, and Clackamas County.

Slide 4 / of 52



Official web site of
Oregon Secretary of State

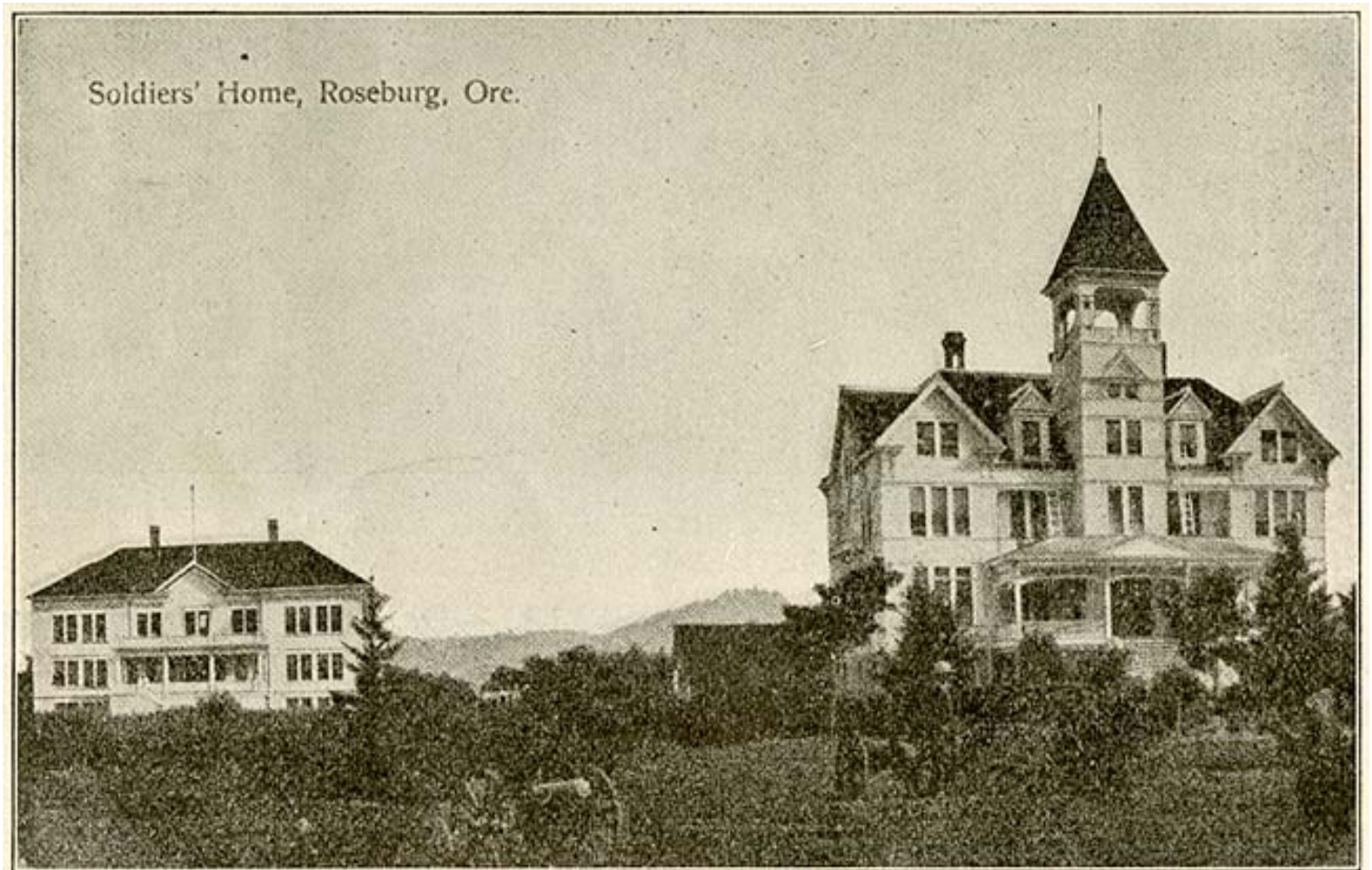
<https://sos.oregon.gov/blue-book>

Oregon Blue Book Centennial Web Exhibit

1917-1918 Oregon Blue Book

The Soldiers' Home in Roseburg.

Slide 5 / of 52



Official web site of
Oregon Secretary of State

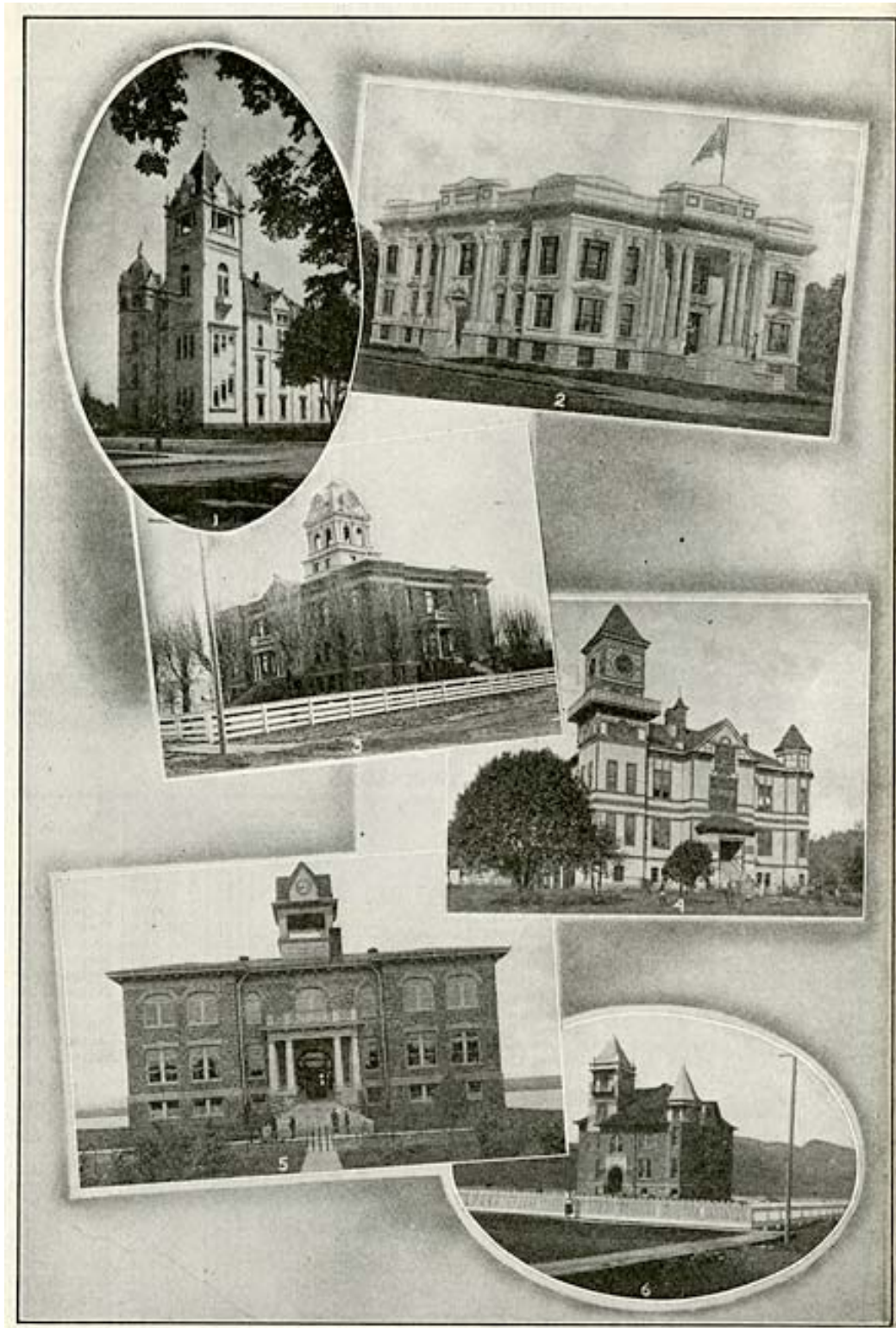
<https://sos.oregon.gov/blue-book>

Oregon Blue Book Centennial Web Exhibit

1923-1924 Oregon Blue Book

County courthouses from top to bottom: Linn County (top left), Wasco County (top right), Crook County, Coos County, Columbia County, and Wheeler County.

Slide 6 / of 52



Official web site of
Oregon Secretary of State

<https://sos.oregon.gov/blue-book>

Oregon Blue Book Centennial Web Exhibit

1931-1932 Oregon Blue Book

Crater Lake with Wizard Island in center.

Slide 7 / of 52



Official web site of
Oregon Secretary of State

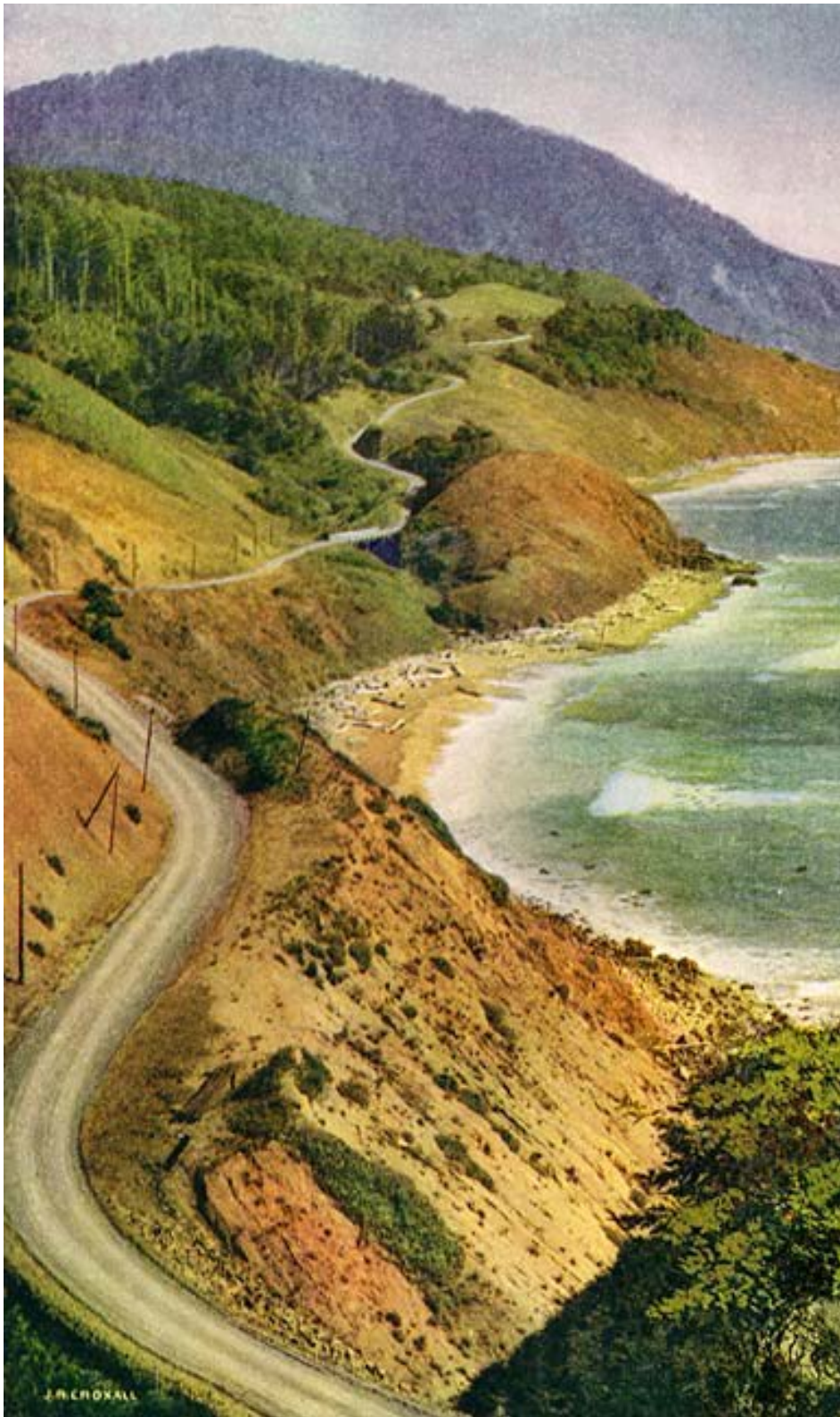
<https://sos.oregon.gov/blue-book>

Oregon Blue Book Centennial Web Exhibit

1931-1932 Oregon Blue Book

The Oregon Coast Highway in Curry County.

Slide 8 / of 52



Official web site of
Oregon Secretary of State

<https://sos.oregon.gov/blue-book>

Oregon Blue Book Centennial Web Exhibit

1931-1932 Oregon Blue Book

Sunset on the Columbia River at Crown Point.

Slide 9 / of 52



Official web site of
Oregon Secretary of State

<https://sos.oregon.gov/blue-book>

Oregon Blue Book Centennial Web Exhibit

1935-1936 Oregon Blue Book

A drawing of a proposed new Columbia River Highway at Multnomah Falls.

Slide 10 / of 52



Official web site of
Oregon Secretary of State

<https://sos.oregon.gov/blue-book>

Oregon Blue Book Centennial Web Exhibit

1935-1936 Oregon Blue Book

Statewide leaders of Oregon government in 1935. Top row, left to right: Earl Snell, Secretary of State; Charles H. Martin, Governor; Rufus C. Holman, Treasurer. Middle image of Justices of the Oregon Supreme Court: Percy R. Kelly, George Rossman, Jas. U. Campbell J.O. Bailey, Henry J. Bean, John L. Rand, Harry W. Belt. Bottom row, left to right: I.H. van Winkle, Attorney General; C.A. Howard, Superintendent of Public Instruction; C.H. Gram, Labor Commissioner.

Slide 11 / of 52



Official web site of
Oregon Secretary of State

<https://sos.oregon.gov/blue-book>

Oregon Blue Book Centennial Web Exhibit

1937-1938 Oregon Blue Book

The Patterson Bridge over the Rogue River at Gold Beach on the southern Oregon coast.

Slide 12 / of 52



Official web site of
Oregon Secretary of State

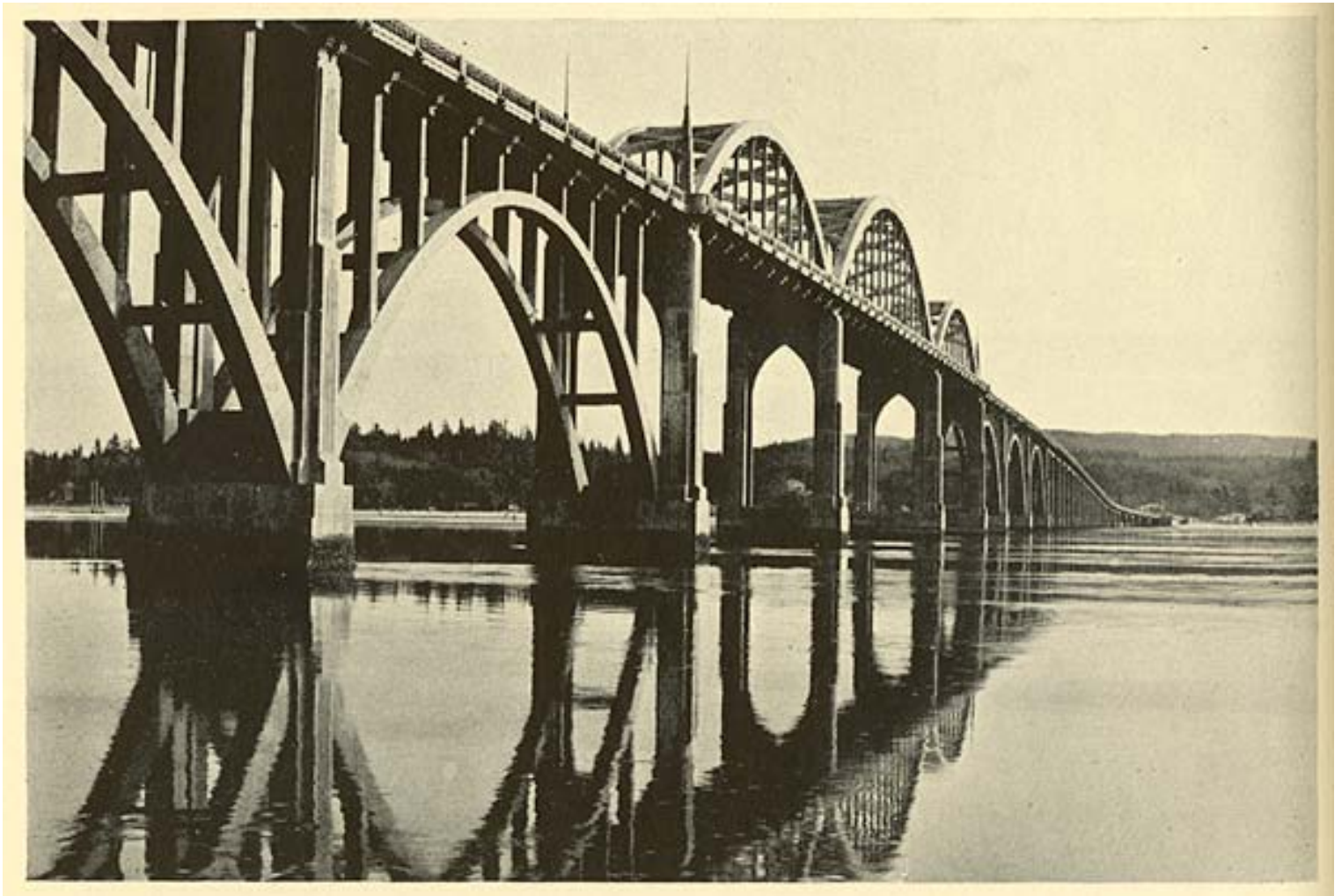
<https://sos.oregon.gov/blue-book>

Oregon Blue Book Centennial Web Exhibit

1937-1938 Oregon Blue Book

The Alsea River Bridge at Waldport.

Slide 13 / of 52



Official web site of
Oregon Secretary of State

<https://sos.oregon.gov/blue-book>

Oregon Blue Book Centennial Web Exhibit

1939-1940 Oregon Blue Book

State institutions from top to bottom: Boys' Training Center in Woodburn; State Penitentiary Administration Building in Salem; Girls' Industrial School in Salem; Tuberculosis Hospital in Salem; and Blind School in Salem.

Slide 14 / of 52



Official web site of
Oregon Secretary of State

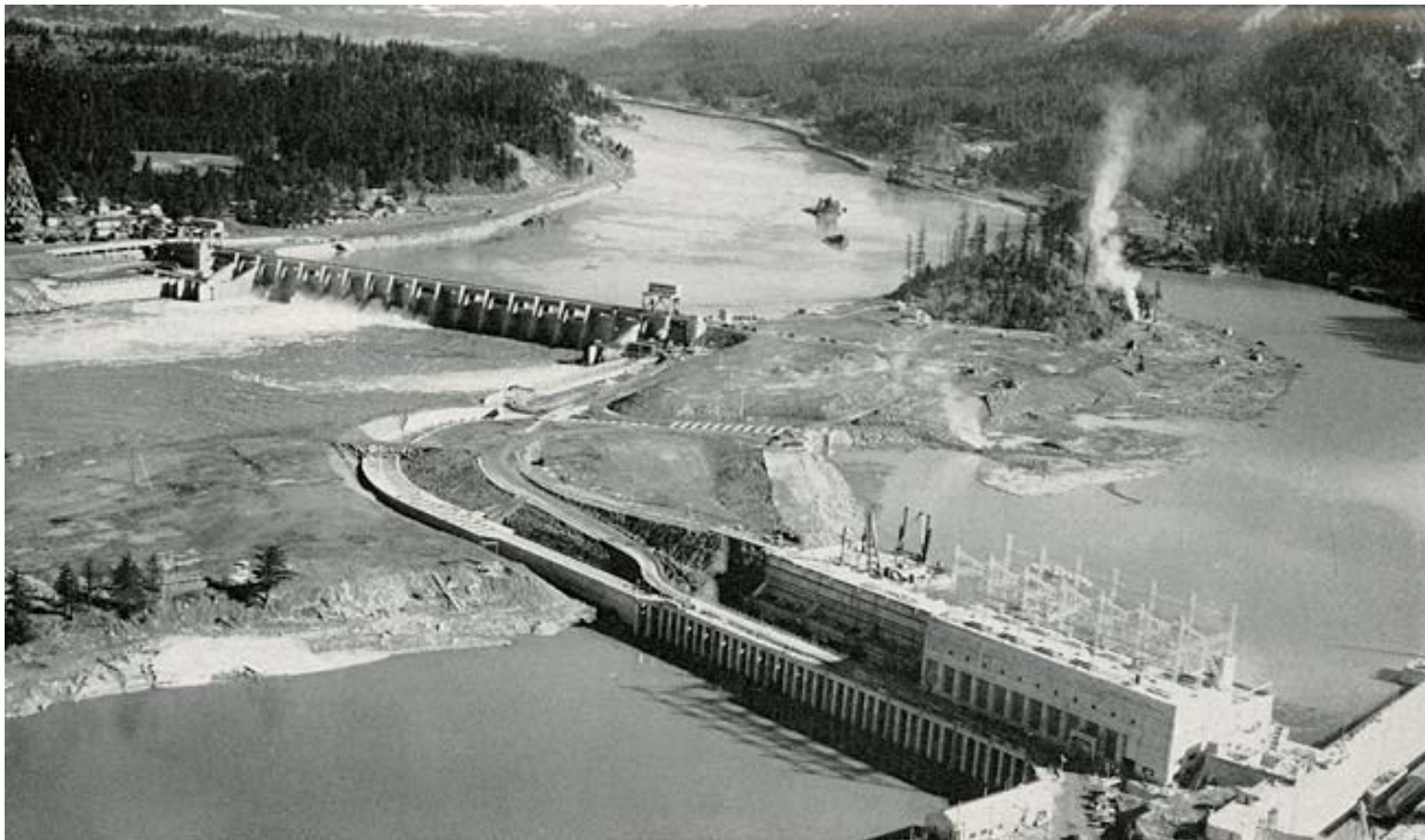
<https://sos.oregon.gov/blue-book>

Oregon Blue Book Centennial Web Exhibit

1939-1940 Oregon Blue Book

Bonneville Dam on the Columbia River.

Slide 15 / of 52



Official web site of
Oregon Secretary of State

<https://sos.oregon.gov/blue-book>

Oregon Blue Book Centennial Web Exhibit

1941-1942 Oregon Blue Book

A car travels along the Oregon Coast Highway at Waldport.

Slide 16 / of 52



Official web site of
Oregon Secretary of State

<https://sos.oregon.gov/blue-book>

Oregon Blue Book Centennial Web Exhibit

1945-1946 Oregon Blue Book

Sport fishing for salmon at Astoria.

Slide 17 / of 52



Official web site of
Oregon Secretary of State

<https://sos.oregon.gov/blue-book>

Oregon Blue Book Centennial Web Exhibit

1949-1950 Oregon Blue Book

Odell Lake in the Cascade Mountains.

Slide 18 / of 52



Official web site of
Oregon Secretary of State

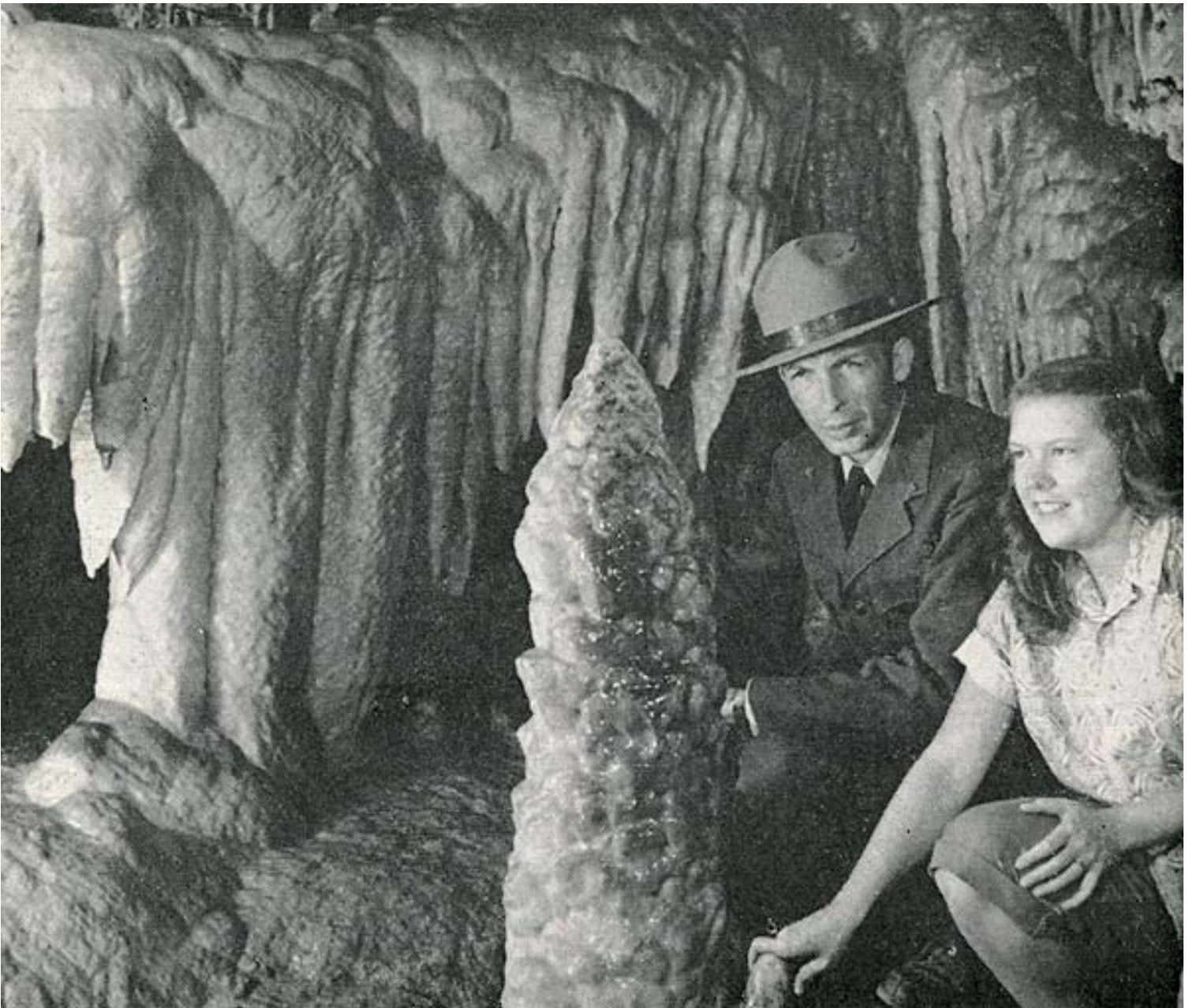
<https://sos.oregon.gov/blue-book>

Oregon Blue Book Centennial Web Exhibit

1951-1952 Oregon Blue Book

The Joaquin Miller Chapel in the Oregon Caves.

Slide 19 / of 52



Official web site of
Oregon Secretary of State

<https://sos.oregon.gov/blue-book>

Oregon Blue Book Centennial Web Exhibit

1951-1952 Oregon Blue Book

An illustrated map shows key Oregon features for each region such as pears near Medford, boating & fishing along the coast, trees (timber) in Bend, a cowboy riding a bronco near Pendleton, sealions near Florence, a lighthouse off the coast of Gold Beach, a farmer on a tractor in the Willamette Valley, a hunter and game east of Lakeview.

Slide 20 / of 52



Official web site of
Oregon Secretary of State

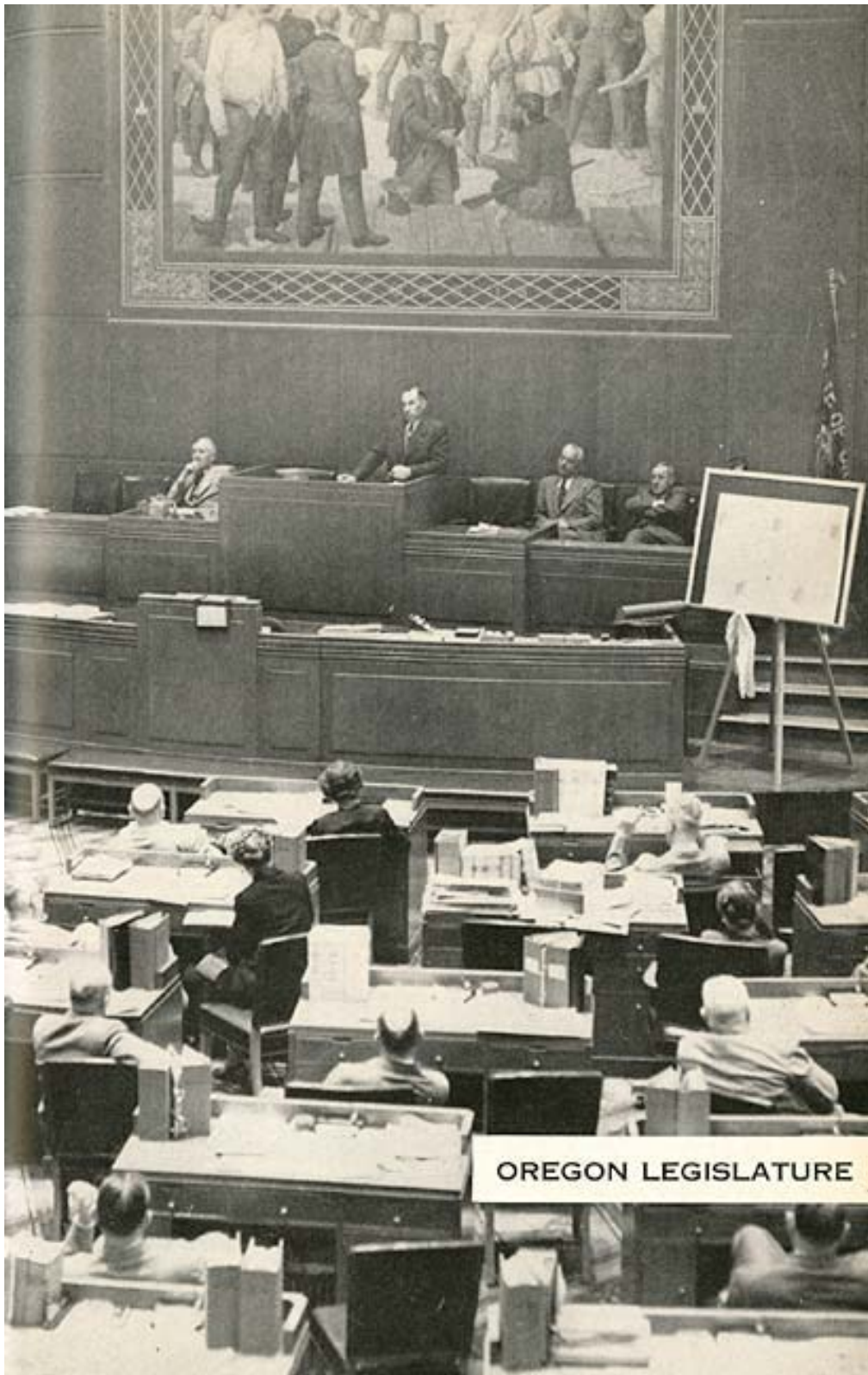
<https://sos.oregon.gov/blue-book>

Oregon Blue Book Centennial Web Exhibit

1953-1954 Oregon Blue Book

The chamber of the Oregon House of Representatives at the State Capitol in Salem.

Slide 21 / of 52



Official web site of
Oregon Secretary of State

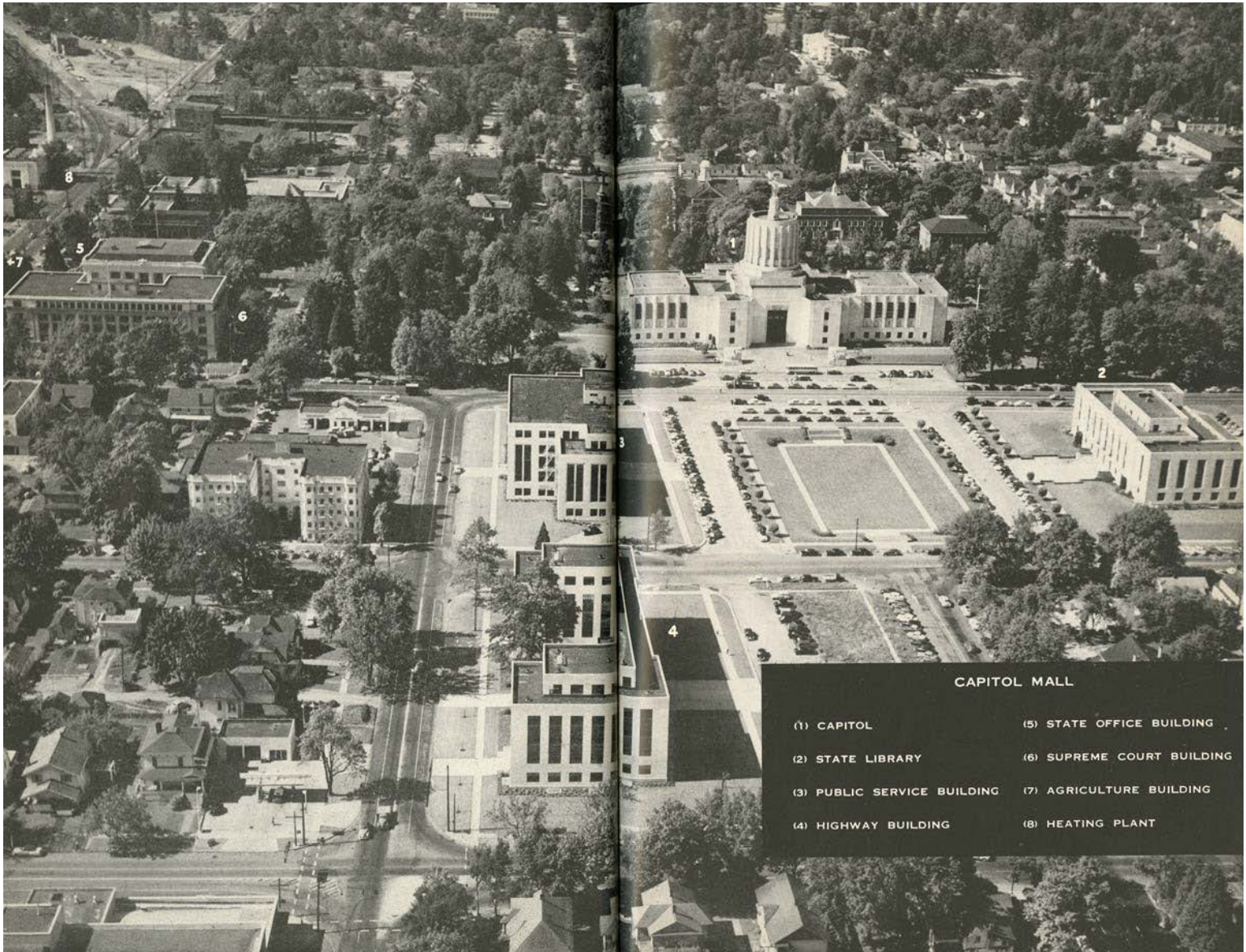
<https://sos.oregon.gov/blue-book>

Oregon Blue Book Centennial Web Exhibit

1953-1954 Oregon Blue Book

An aerial view of the Capitol Mall in Salem circa 1952.

Slide 22 / of 52



Official web site of
Oregon Secretary of State

<https://sos.oregon.gov/blue-book>

Oregon Blue Book Centennial Web Exhibit

1953-1954 Oregon Blue Book

Three of many photographs used to illustrate the work of state-aided institutions. From top to bottom: Children's Farm Home of the Oregon W.C.T.U.; Catholic Services for Children, Inc.; and The Boys' and Girls' Aid Society of Oregon.

Slide 23 / of 52



Official web site of
Oregon Secretary of State

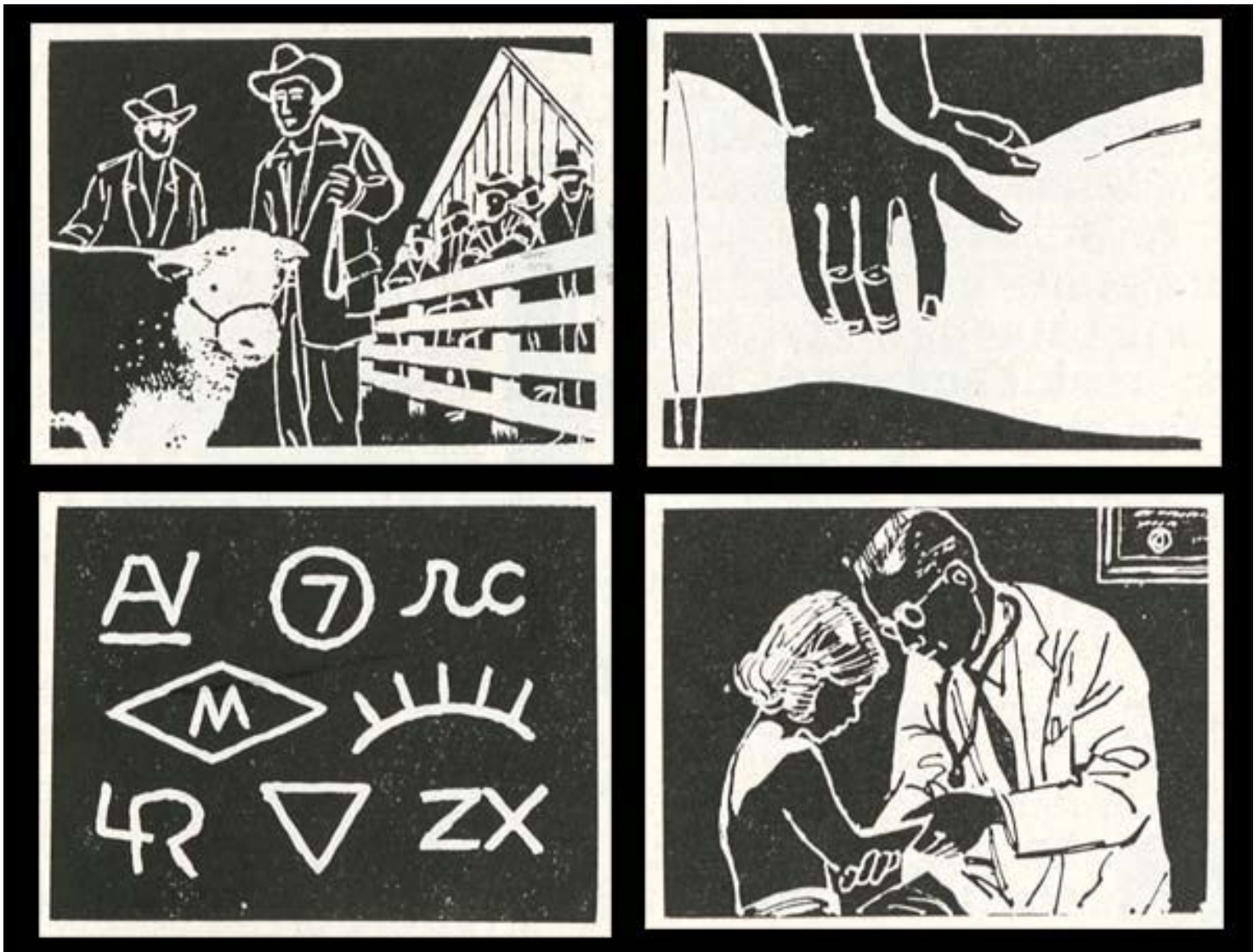
<https://sos.oregon.gov/blue-book>

Oregon Blue Book Centennial Web Exhibit

1953-1954 Oregon Blue Book

Four of many icons used in the Blue Book to show various state commissions: Top left: Board of Livestock Auction Markets; Top right: Board of Massage Examiners; Bottom left: Livestock Advisory Committee; Bottom right: Board of Medical Examiners.

Slide 24 / of 52



Official web site of
Oregon Secretary of State

<https://sos.oregon.gov/blue-book>

Oregon Blue Book Centennial Web Exhibit

1955-1956 Oregon Blue Book

Oregon State Police officials plan (left) and march (right).

Slide 25 / of 52



Official web site of
Oregon Secretary of State

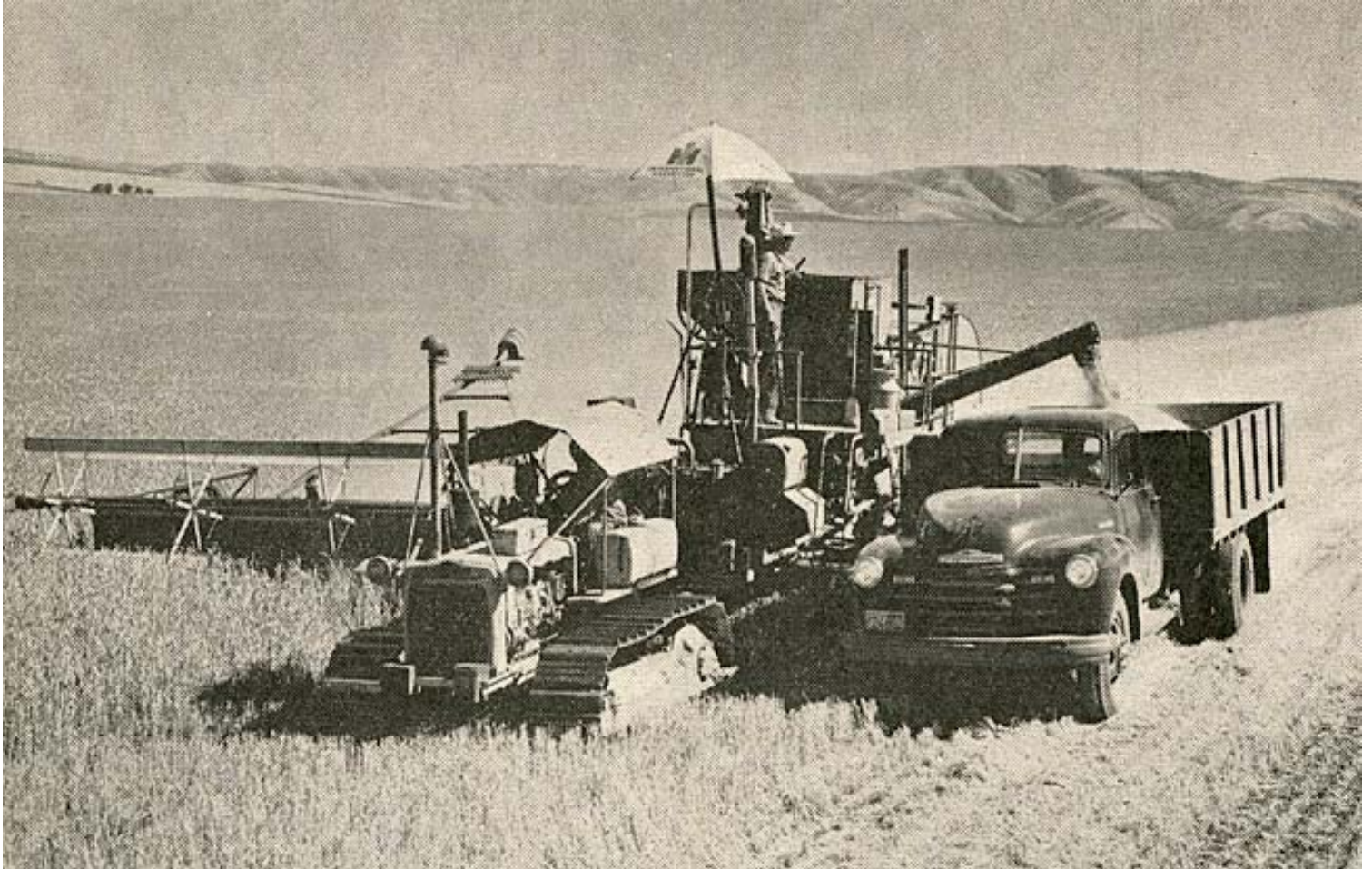
<https://sos.oregon.gov/blue-book>

Oregon Blue Book Centennial Web Exhibit

1959-1960 Oregon Blue Book

A combine harvests grain near Athena.

Slide 26 / of 52



Official web site of
Oregon Secretary of State

<https://sos.oregon.gov/blue-book>

Oregon Blue Book Centennial Web Exhibit

1961-1962 Oregon Blue Book

A motorist in distress is assisted by a member of the Oregon State Police.

Slide 27 / of 52



Official web site of
Oregon Secretary of State

<https://sos.oregon.gov/blue-book>

Oregon Blue Book Centennial Web Exhibit

1963-1964 Oregon Blue Book

A checker rings up groceries at a supermarket in Salem.

Slide 28 / of 52



Official web site of
Oregon Secretary of State

<https://sos.oregon.gov/blue-book>

Oregon Blue Book Centennial Web Exhibit

1965-1966 Oregon Blue Book

Workers produce gyroscopes and electronic relays at a Troutdale plant.

Slide 29 / of 52



Official web site of
Oregon Secretary of State

<https://sos.oregon.gov/blue-book>

Oregon Blue Book Centennial Web Exhibit

1967-1968 Oregon Blue Book

Oregon Air National Guardsmen take delivery of an F-102 jet fighter plane in 1966.

Slide 30 / of 52



Official web site of
Oregon Secretary of State

<https://sos.oregon.gov/blue-book>

Oregon Blue Book Centennial Web Exhibit

1969-1970 Oregon Blue Book

Campers relax next to their tourist trailer at Sunset Bay State Park.

Slide 31 / of 52



Official web site of
Oregon Secretary of State

<https://sos.oregon.gov/blue-book>

Oregon Blue Book Centennial Web Exhibit

1973-1974 Oregon Blue Book

A matron (left) escorts two residents of the Oregon Women's Penitentiary.

Slide 32 / of 52



Official web site of
Oregon Secretary of State

<https://sos.oregon.gov/blue-book>

Oregon Blue Book Centennial Web Exhibit

1973-1974 Oregon Blue Book

Governor Tom McCall shares a celebration of his 59th birthday and the 60th birthday of the Camp Fire Girls.

Slide 33 / of 52



Official web site of
Oregon Secretary of State

<https://sos.oregon.gov/blue-book>

Oregon Blue Book Centennial Web Exhibit

1975-1976 Oregon Blue Book

The Portland Trail Blazers professional basketball team in action.

Slide 34 / of 52



Official web site of
Oregon Secretary of State

<https://sos.oregon.gov/blue-book>

Oregon Blue Book Centennial Web Exhibit

1977-1978 Oregon Blue Book

Students look at the state seal in the floor of the rotunda of the State Capitol in Salem.

Slide 35 / of 52



Official web site of
Oregon Secretary of State

<https://sos.oregon.gov/blue-book>

Oregon Blue Book Centennial Web Exhibit

1977-1978 Oregon Blue Book

Fireworks light up the sky above a rodeo.

Slide 36 / of 52



Official web site of
Oregon Secretary of State

<https://sos.oregon.gov/blue-book>

Oregon Blue Book Centennial Web Exhibit

1977-1978 Oregon Blue Book

Salem merchants don costumes to celebrate the Bicentennial in 1976.

Slide 37 / of 52



Official web site of
Oregon Secretary of State

<https://sos.oregon.gov/blue-book>

Oregon Blue Book Centennial Web Exhibit

1981-1982 Oregon Blue Book

The Oregon Square Dancers at the Aloha Grange Hall.

Slide 38 / of 52



Official web site of
Oregon Secretary of State

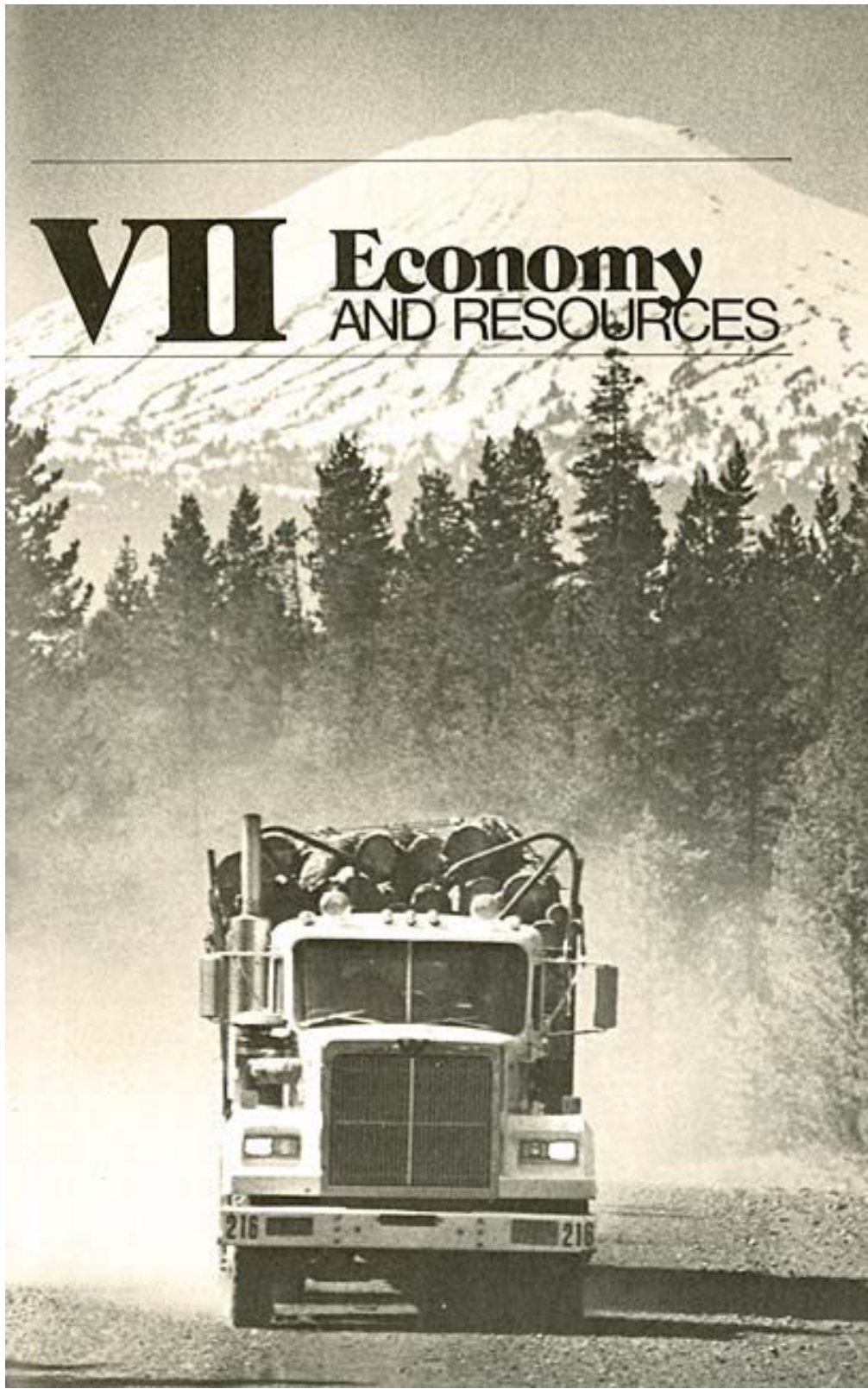
<https://sos.oregon.gov/blue-book>

Oregon Blue Book Centennial Web Exhibit

1983-1984 Oregon Blue Book

A log truck speeds down a gravel road.

Slide 39 / of 52



Official web site of
Oregon Secretary of State

<https://sos.oregon.gov/blue-book>

Oregon Blue Book Centennial Web Exhibit

1987-1988 Oregon Blue Book

Riders wait for the very first light rail train to arrive at the Gresham City Hall.

Slide 40 / of 52



Official web site of
Oregon Secretary of State

<https://sos.oregon.gov/blue-book>

Oregon Blue Book Centennial Web Exhibit

1989-1990 Oregon Blue Book

A man installs a new license plate on a car. The plate was the winning design in a contest that drew 8,555 entries.

Slide 41 / of 52



Official web site of
Oregon Secretary of State

<https://sos.oregon.gov/blue-book>

Oregon Blue Book Centennial Web Exhibit

1991-1992 Oregon Blue Book

Native American children stand in front of a teepee.

Slide 42 / of 52



Official web site of
Oregon Secretary of State

<https://sos.oregon.gov/blue-book>

Oregon Blue Book Centennial Web Exhibit

1991-1992 Oregon Blue Book

Competitors saw a log in a "Jack and Jill" event at a logging show.

Slide 43 / of 52



Official web site of
Oregon Secretary of State

<https://sos.oregon.gov/blue-book>

Oregon Blue Book Centennial Web Exhibit

1995-1996 Oregon Blue Book

The University of Oregon Ducks rally squad performs in front of Disneyland in Anaheim, California before the Ducks football team played in the Rose Bowl.

Slide 44 / of 52



Official web site of
Oregon Secretary of State

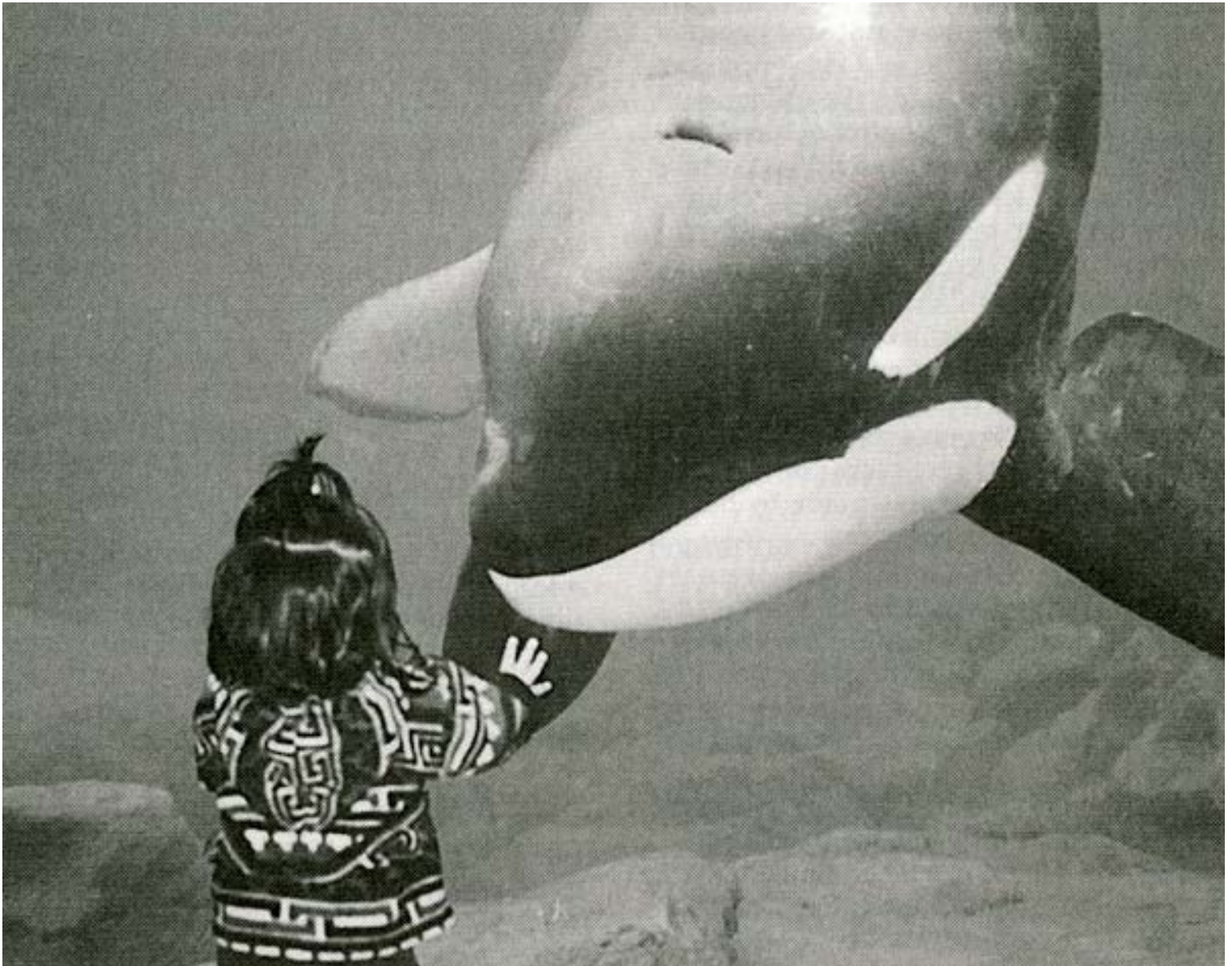
<https://sos.oregon.gov/blue-book>

Oregon Blue Book Centennial Web Exhibit

1997-1998 Oregon Blue Book

A little girl reaches out to Keiko, the orca whale, at the Oregon Coast Aquarium in 1996.

Slide 45 / of 52



Official web site of
Oregon Secretary of State

<https://sos.oregon.gov/blue-book>

Oregon Blue Book Centennial Web Exhibit

1999-2000 Oregon Blue Book

Chimney Rock along the Crooked River south of Prineville. Beginning with the 1999-2000 Blue Book, a color center section has included topical exhibits. This one included a scenic image from each of Oregon's 36 counties.

Slide 46 / of 52



Official web site of
Oregon Secretary of State

<https://sos.oregon.gov/blue-book>

Oregon Blue Book Centennial Web Exhibit

2001-2002 Oregon Blue Book

A life saving service crew on Coos Bay circa 1890s. (Coos County Historical Museum) Beginning with the 1999-2000 Blue Book, a color center section has included topical exhibits. This one included a scenic image from each of Oregon's 36 counties that displayed people at work.

Slide 47 / of 52



Official web site of
Oregon Secretary of State

<https://sos.oregon.gov/blue-book>

Oregon Blue Book Centennial Web Exhibit

2003-2004 Oregon Blue Book

A 1918 trademark from the Astoria Soda Works. Beginning with the 1999-2000 Blue Book, a color center section has included topical exhibits. This one included colorful Oregon trademark labels.
Slide 48 / of 52



Official web site of
Oregon Secretary of State

<https://sos.oregon.gov/blue-book>

Oregon Blue Book Centennial Web Exhibit

2005-2006 Oregon Blue Book

Paper lithographed fan featuring the seal used by the fair, depicting Lewis and Clark escorted by Lady Liberty, walking “into the setting sun” (Courtesy Columbia Gorge Discovery Center). Beginning with the 1999-2000 Blue Book, a color center section has included topical exhibits. This one included memorabilia from the 1905 Lewis and Clark Exposition in Portland.

Slide 49 / of 52



Official web site of
Oregon Secretary of State

<https://sos.oregon.gov/blue-book>

Oregon Blue Book Centennial Web Exhibit

2007-2008 Oregon Blue Book

Murals of lumber and agricultural workers painted by Carl Morris in 1942 after he won a WPA Federal Arts Project mural competition in 1941. They were installed in the lobby of the Eugene Post Office in 1943. Beginning with the 1999-2000 Blue Book, a color center section has included topical exhibits. This one included photographs of Depression Era public works such as bridges, dams, art and buildings.

Slide 50 / of 52



Official web site of
Oregon Secretary of State

<https://sos.oregon.gov/blue-book>

Oregon Blue Book Centennial Web Exhibit

2009-2010 Oregon Blue Book

Members of the Coon Family pose in a car in 1913. The Linn County farm was founded in 1850. Beginning with the 1999-2000 Blue Book, a color center section has included topical exhibits. This one included photographs depicting life on Oregon farms and ranches that had been in the same family for 150 years or more. Related resource: See the separate Web exhibit entitled "Century Farms and Ranches" for similar images.

Slide 51 / of 52



Official web site of
Oregon Secretary of State

<https://sos.oregon.gov/blue-book>

Oregon Blue Book Centennial Web Exhibit

2011-2012 Oregon Blue Book

A political cartoon shows four women driving a steam roller of progress from the West as they crush the opposition. The cartoon, which portrays woman suffrage as inevitable, appeared in Judge magazine in 1917. Image colorized for exhibit. Beginning with the 1999-2000 Blue Book, a color center section has included topical exhibits. This one included images and memorabilia from the struggle for woman suffrage in Oregon and nationally. Related resource: See the separate Web exhibit entitled "Woman Suffrage Centennial" for similar images.

Slide 52 / of 52

